



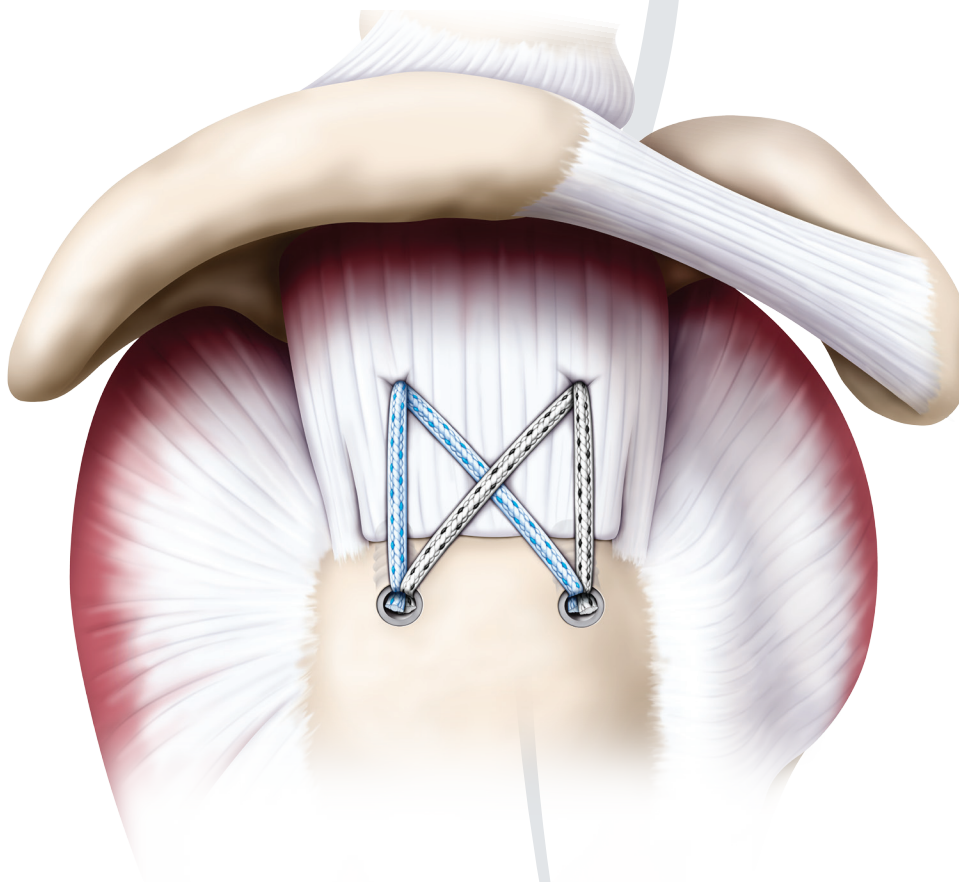
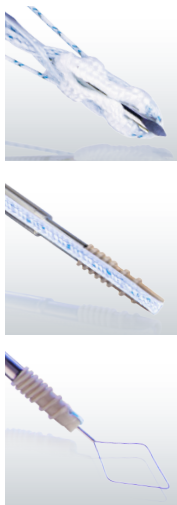
SHOULDER RESTORATION SYSTEM  
CuffLink™/CrossFT™ Knotless  
Procedure Brochure

# The CuffLink™ Double-Row Solution

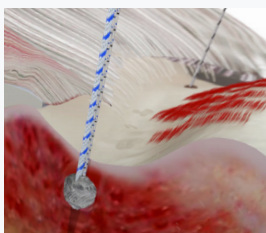
## Less Abrasion, Less Unplanned Tension.

Whether it is a smaller medial row anchor, Hi-Fi® tape that data shows is less abrasive<sup>1</sup> or controlled lateral row tensioning, CONMED's NEW CuffLink™ Double-Row Solution is designed to improve every step of your double-row rotator cuff repair technique for enhanced tendon healing.

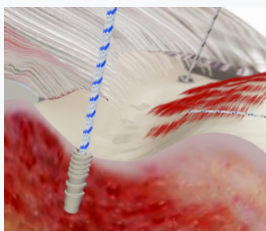
Shoulder Restoration System™



To learn more about these and other innovative products, call **800-237-0169** or visit **CONMED.com**.



**Y-Knot® RC All Suture Anchor w/Hi-Fi® Tape**



**CrossFt™ Knotless PEEK Anchor w/Hi-Fi® Tape**

# The Missing Link to Your Double Row Repairs

CONMED's **NEW CuffLink™** Double-Row Solution combines our easy-to-use Y-Knot® RC self-punching all-suture anchor, the controlled tension of the New CrossFt™ Knotless PEEK Suture anchor and less abrasive Hi-Fi® Tape<sup>1</sup> for optimized rotator cuff compression. Whatever anchors you are currently using, the comprehensive CuffLink™ Solution can offer multiple improvements over other double-row rotator cuff solutions.

## STEP 1: Medial Row Fixation

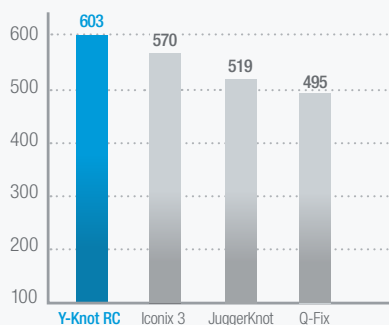
### **NEW** Option 1 - Recommended Knotted Anchor:

#### **Y-Knot® RC Self-Punching All-Suture Anchor with Hi-Fi® Tape**

- Self-punching: no pilot hole required, eliminating extra step
- Smaller: 2.8mm footprint for less bone removal, great for maximizing compression and revision cases
- Stronger fixation (603N) than traditional 5.5mm anchors<sup>2</sup>
- All-suture: no hard loose bodies left in the joint
- Enables multiple stitching configurations

### Pullout Strength (N)<sup>2</sup>

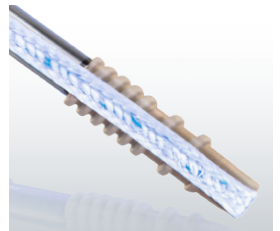
Pullout in Porcine Cortical Bone



<sup>1</sup>TR16-787/TR16-787-1. <sup>2</sup>Barber, FA. et al. All-Suture Anchors: Biomechanical Analysis of Pull-out Strength, Displacement, and Failure Mode. Arthroscopy. 2016;32:1-9.



**CUFFLINK™ /  
CROSSFT™  
KNOTLESS  
PROCEDURE**



**Less Abrasive  
Hi-Fi® Tape**

**NEW** *Option 2 - Recommended Knotless Anchor:*

*CrossFT™ Knotless PEEK Suture Anchor with Hi-Fi® Tape*

- Hi-Fi® Tape is 69% less abrasive than a leading competitor's tape\* when measuring tendon tear-through<sup>1</sup>
- Strong: Dual-thread pattern for cortical and cancellous bone fixation
- Bone marrow vent channel designed to provide healing properties of bone marrow
- 4.0mm, 4.75mm and 5.5mm diameters



\*Measured against Arthrex Swivelock w/FiberTape. <sup>1</sup> TR16-787/TR16-787-1.



Now with  
**Hi-Fi® Tape**

**CUFFLINK™ /  
CROSSFT™  
KNOTLESS  
PROCEDURE**

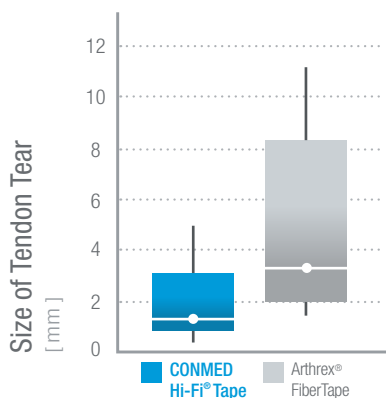
## Data Shows Hi-Fi® is Better!<sup>1,3</sup>

Available on Y-Knot® RC and CrossFT™ Knotless Anchors, Hi-Fi® Tape and #2 Hi-Fi® Suture provide distinct advantages to other tape and suture options you may be using.

### Hi-Fi® Tape Reduced Abrasion & Tendon Tear-Through<sup>1</sup>

- 69% less abrasive than a leading competitor's tape\* when measuring tendon tear-through<sup>1</sup>
- Broader compression than #2 suture for increased tendon-to-bone interface
- More than twice as strong as #2 suture<sup>3</sup>
- Simplifies double-row repairs by eliminating need for medial knot-tying

#### Tendon Tear-Through by Suture Tape<sup>1</sup>



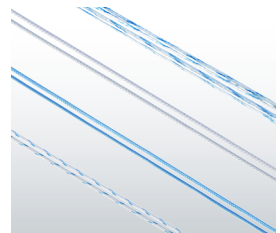
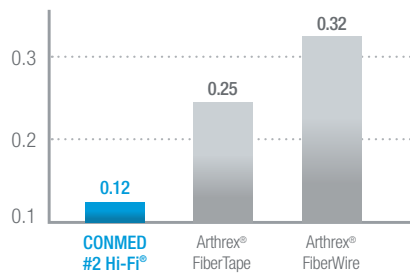
\* Measured against Arthrex FiberTape. <sup>1</sup>TR16-787/TR16-787-1. <sup>3</sup>Data on file. TR16-219.

# Hi-Fi® Suture

## A Less Abrasive Option<sup>4</sup>

Peer-reviewed literature has shown that CONMED's #2 Hi-Fi® Suture reduced mean cutting rate by over 50% when compared to a competitor's suture and tape\*, which were more abrasive on the suture-tendon interface and led to higher tendon tear-through.<sup>4</sup>

Cutting Rate Through Tendon (Mean)<sup>4</sup>  
[ mm / cycle ]



#2 Hi-Fi® Suture

Why use Hi-Fi® Tape? Think About This:

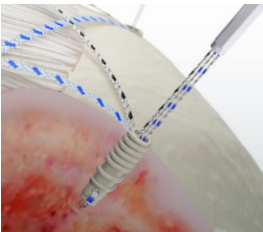
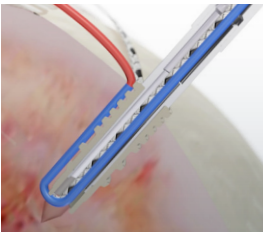
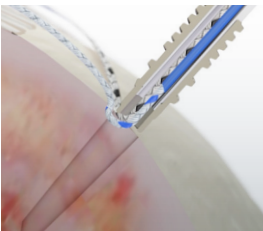
**BOTH our #2 Hi-Fi Suture<sup>4</sup> and Hi-Fi® Tape<sup>1</sup> cause less abrasion and tendon tear-through than a leading competitor\***

\* Measured against Arthrex FiberTape & FiberWire. <sup>1</sup>TR16-787/TR16-787-1. <sup>4</sup>Deranlot J, Maurel N, Diop A, Nourissat G, et al. Abrasive Properties of Braided Polyblend Sutures in Cuff Tendon Repair: An in Vitro Biomechanical Study Exploring Regular and Tape Sutures.

## STEP 2: Lateral Row Fixation

**NEW** *Recommended Knotless Anchor:*  
**CrossFT™ Knotless PEEK Suture Anchor with Hi-Fi® Tape**

- Controlled tension to optimize tendon compression
- Hi-Fi® Tape is 69% less abrasive than a leading competitor's tape\* when measuring tendon tear-through<sup>1</sup>
- Strong: Dual-thread pattern for cortical and cancellous bone fixation
- Able to accept up to 6 limbs of suture
- 4.0mm, 4.75mm and 5.5mm diameters



**Controlled Tension  
Mechanism**

### What is Controlled Tension?

CrossFT™ Knotless anchors allow surgeons to control suture tension on cuff tendon. This is designed to reduce the risk of over-tensioning the repair which could cut off blood flow to the tendon.

- Telescoping cleat maintains constant suture tension as anchor is inserted

### Why use CrossFT™ Knotless Anchors? Think About This:

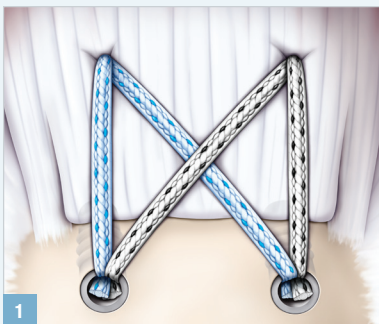
When compared to a leading competitor,\* CrossFT™ Knotless anchors offer these improvements

- **Better control over suture tensioning**
- **Hi-Fi® tape that is less abrasive and causes less tendon tear-through<sup>1</sup>**
- **Dual-thread pattern for better fixation**

\* Measured against Arthrex Swivelock w/FiberTape. <sup>1</sup>TR16-787/TR16-787-1.

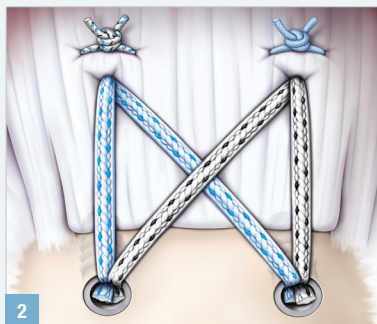
# CuffLink™ - One System for Every Technique

With the right combination of Y-Knot® RC and CrossFT™ Knotless anchors, the CuffLink™ Solution **supports virtually every double-row rotator cuff technique** for maximum versatility.



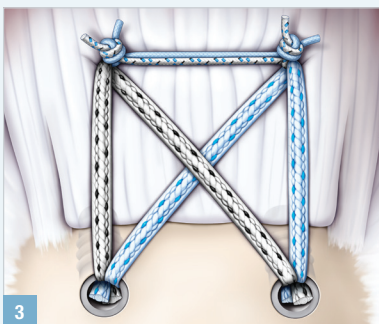
## CuffLink™ Knotless Anchor Technique

Fast technique with no knots tied medially. Two CrossFT™ Knotless anchors w/Tape or Y-Knot® RC w/Tape medially and two CrossFT™ Knotless anchors laterally.



## Medial Mattress Stitch Technique

Two CrossFT™ Knotless anchors w/Tape or Y-Knot® RC w/Tape medially and two CrossFT™ Knotless anchors laterally. #2 sutures from medial row anchors are passed and tied as a mattress stitch. Knot-tying provides medial row compression.



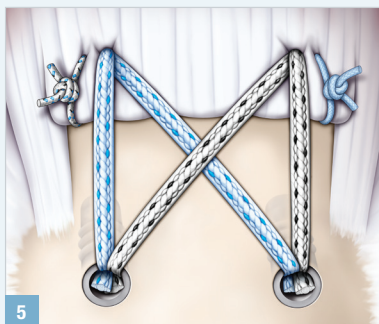
## Medial Pulley Stitch Technique

Two CrossFT™ Knotless anchors w/Tape or Y-Knot® RC w/Tape medially and two CrossFT™ Knotless anchors laterally. #2 sutures from medial row anchors are passed and tied as a medial pulley. The medial pulley provides medial row compression.



## Medial Rip-Stop Stitch Technique

Two CrossFT™ Knotless anchors w/Tape or Y-Knot® RC w/Tape medially and two CrossFT™ Knotless anchors laterally. #2 sutures from medial row anchor are passed and tied as a rip-stop stitch. In order to prevent tear-through, rip-stop mattress stitches are placed just lateral to the medial row, reinforcing these medial stitches in case of poor tendon quality.



## Simple Stitch Technique

If the cuff is not able to retract all the way back down to the native footprint, the surgeon might want to use the #2 sutures from the medial row anchors as a simple stitch. Two CrossFT™ Knotless anchors w/Tape or Y-Knot® RC w/Tape medially and two CrossFT™ Knotless Anchors laterally.





525 French Road, Utica, NY 13502

**CUFFLINK™ /  
CROSSFT™  
KNOTLESS  
PROCEDURE**

*To take the next step toward improving your double-row rotator cuff repairs, call **800.237.0169** to schedule a demonstration with your local **CONMED Sales Representative**.*

## Ordering Information

Description	Catalog Number
<b>Medial Row Anchor</b>	
Y-Knot® RC with Hi-Fi® tape (one blue Hi-Fi® Tape, one #2 blue/black Hi-Fi® Suture)	YRC02STA
Y-Knot® RC with Hi-Fi® tape (one white/black Hi-Fi® Tape, one #2 solid blue Hi-Fi® Suture)	YRC02STB
4.0mm CrossFT™ Knotless Anchor with one blue Hi-Fi® tape	CFK-40TA
4.0mm CrossFT™ Knotless Anchor with one white/black Hi-Fi® tape	CFK-40TB
4.75mm CrossFT™ Knotless Anchor with one blue Hi-Fi® tape	CFK-475STA
4.75mm CrossFT™ Knotless Anchor with one white/black Hi-Fi® tape	CFK-475STB
5.5mm CrossFT™ Knotless Anchor with one blue Hi-Fi® tape	CFK-55STA
5.5mm CrossFT™ Knotless Anchor with one white/black Hi-Fi® tape	CFK-55STB
<b>Lateral Row Anchor</b>	
4.0mm CrossFT™ Knotless Anchor	CFK-40
4.75mm CrossFT™ Knotless Anchor	CFK-475S
5.5mm CrossFT™ Knotless Anchor	CFK-55S
<b>Standard Instrumentation</b>	
4.0mm CrossFT™ Knotless Punch, Disposable, Sterile	CFK-DBP40
4.75/5.5mm CrossFT™ Knotless Punch, Disposable, Sterile	CFK-DBP4755
4.0mm CrossFT™ Knotless Drill Bit, Disposable, Sterile	CFK-40D
4.75mm CrossFT™ Knotless Drill Bit, Disposable, Sterile	CFK-475D
5.5mm CrossFT™ Knotless Drill Bit, Disposable, Sterile	CFK-55D
4.0mm CrossFT™ Knotless Punch, Reusable, Non-sterile	CFK-BP40
4.75mm CrossFT™ Knotless Punch, Reusable, Non-sterile	CFK-BP475
5.5mm CrossFT™ Knotless Punch, Reusable, Non-sterile	CFK-BP55
4.0mm CrossFT™ Knotless Tap, Reusable, Non-sterile	CFK-T40
4.75mm CrossFT™ Knotless Tap, Reusable, Non-sterile	CFK-T475
5.5mm CrossFT™ Knotless Tap, Reusable, Non-sterile	CFK-T55

Local 727-392-6464  
Toll Free 1-800-237-0169

CONMED.com  
customer\_service@CONMED.com