

SOFT LAUNCH
SURGICAL TECHNIQUE GUIDE

**ACL Reconstruction:
Femoral Fixation**



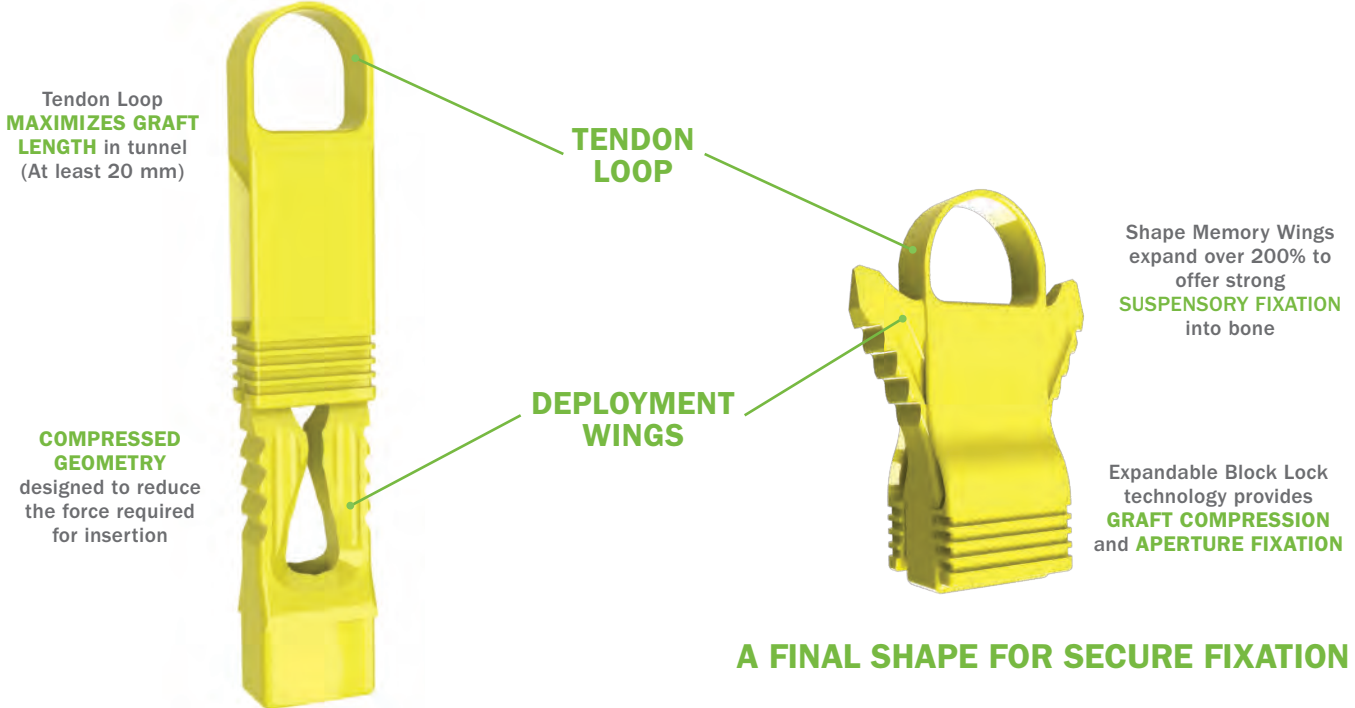
EXOSHAPE®
FEMORAL
SOFT TISSUE FASTENER

SURGICAL TECHNIQUE GUIDE

ACL Reconstruction – Femoral Fixation

PRODUCT FEATURES: IMPLANT

AN INITIAL SHAPE FOR EASY INSERTION



PRODUCT FEATURES: DISPOSABLE DEPLOYMENT GUN



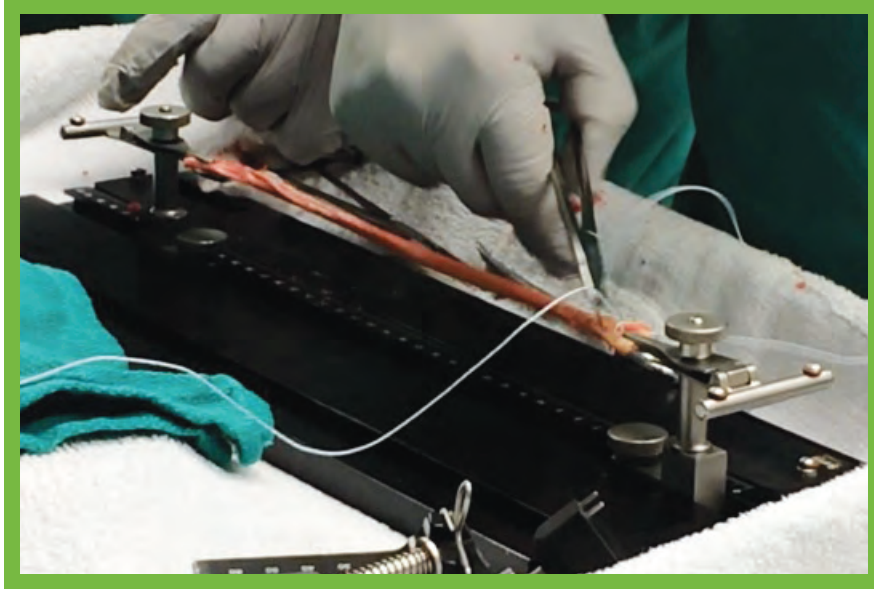
The ExoShape[®] FEMORAL Soft Tissue Fastener is loaded on a Disposable Gun designed with features to provide a simple, intuitive insertion approach.

SURGICAL TECHNIQUE GUIDE

ACL Reconstruction – Femoral Fixation

1

Prepare tendon, ligament, or graft using the Graft Prep Board. Whipstitch the ends of the soft tissue graft using the QuikWhip™ #2 suture. Ensure that each suture limb is long enough to reach the suture cleat (about 15 cm).



2

Carefully determine the diameter of the soft tissue graft using the MedShape Graft Sizing Block found in the ACL General Instrument Tray.



3

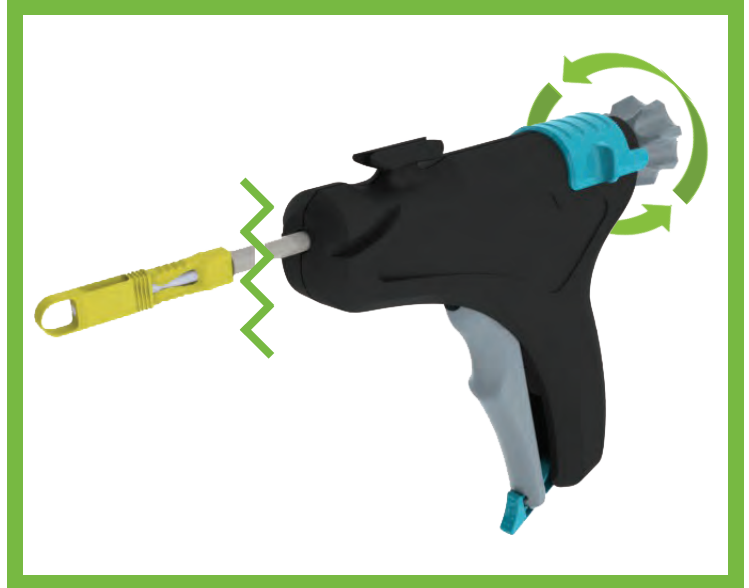
Select the ExoShape FEMORAL Soft Tissue Fastener size that matches the diameter of the graft. **Note:** If the graft measures a 0.5 mm size then size the implant one size up (e.g., 8.5 mm graft, 9 implant).

SURGICAL TECHNIQUE GUIDE

ACL Reconstruction – Femoral Fixation

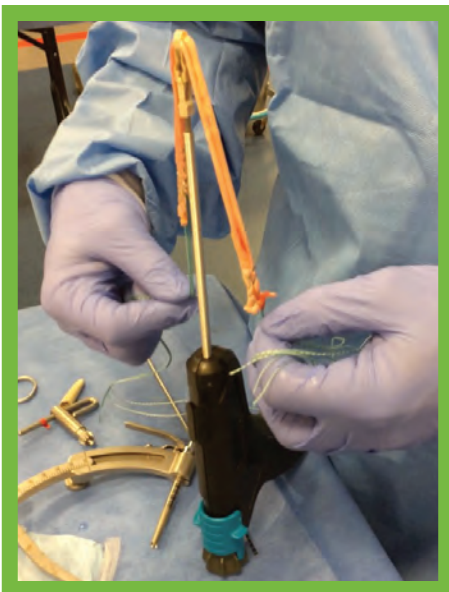
4

Disengage the Knob Lock on the Disposable Gun to rotate the implant body until the Deployment Wings of the implant are parallel with the gun body. Re-engage the Lock.



5

Load graft onto Tendon Loop by pulling the suture limbs through the Tendon Loop until the graft ends are evenly distributed on either side. For transtibial insertion, run the suture limbs through the Suture Channels on each side of the Deployment Gun and secure them in the Suture Cleat.





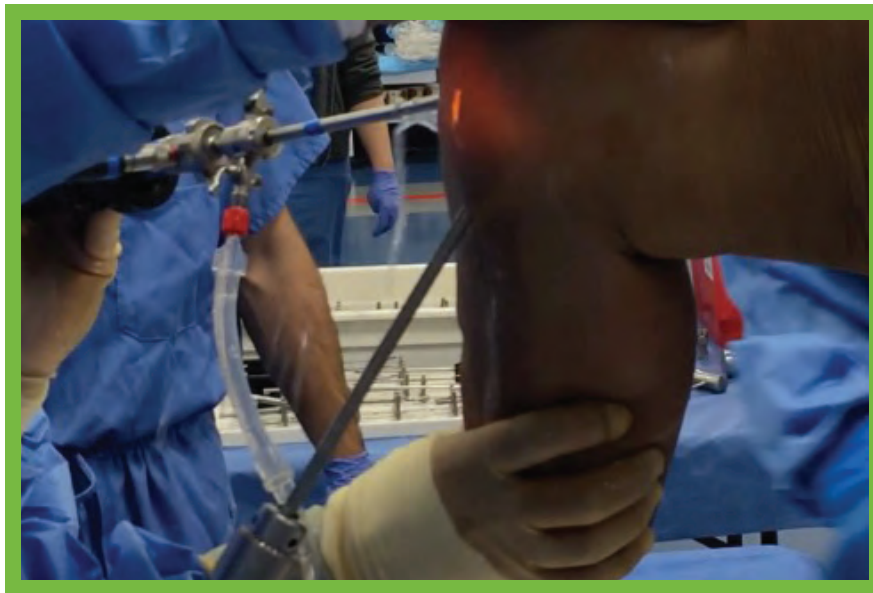
SURGICAL TECHNIQUE GUIDE

ACL Reconstruction – Femoral Fixation

6

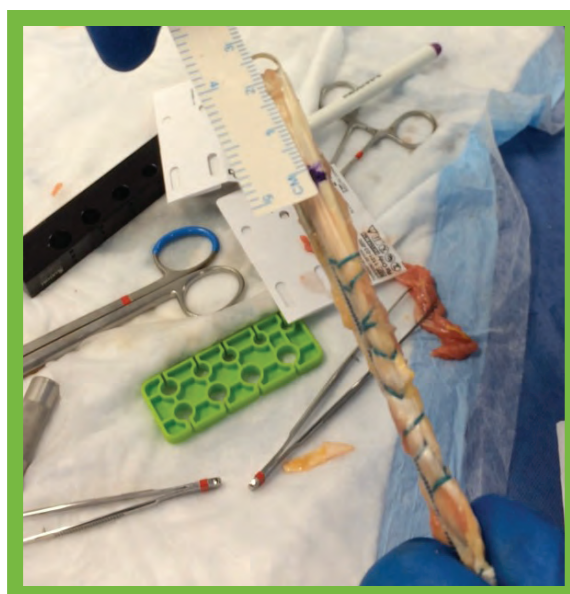
Prepare the bone tunnel for the graft per standard procedure. To determine the appropriate tunnel size, feed the graft-implant construct through the Graft Sizing Block. General recommendations are to drill the tunnel 1 mm larger than the implant diameter.

Surgical Pearl: Ensure that there is at least 1 mm of back wall around tunnel.



7

Using the Ruler and Indigo Skin Marker (found in ACL Procedure Pack), mark a line around entire circumference of graft to the desired insertion depth. Recommended depth is 25 – 30 mm from top of the Tendon Loop.



SURGICAL TECHNIQUE GUIDE

ACL Reconstruction – Femoral Fixation

Transtibial Approach

8a

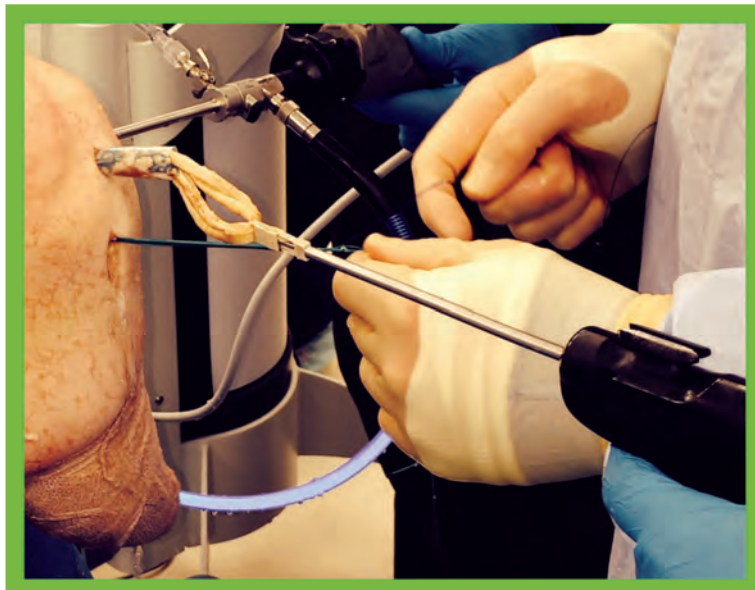
Position the Tendon Loop at a 2 or 10 o'clock position in the bone tunnel such that the Deployment Wings are oriented to expand in the inferior-superior direction and the Block Lock expands in the medial and lateral directions and carefully insert.



AM Portal Approach

8b

Feed the suture limbs into the AM portal and through the tibial tunnel. Position the Tendon Loop at a 2 or 10 o'clock position in the bone tunnel such that the Deployment Wings are oriented to expand in the inferior-superior direction and the Block Lock expands in the medial and lateral directions. Carefully insert while using sutures to shuttle the graft through the tibial tunnel.

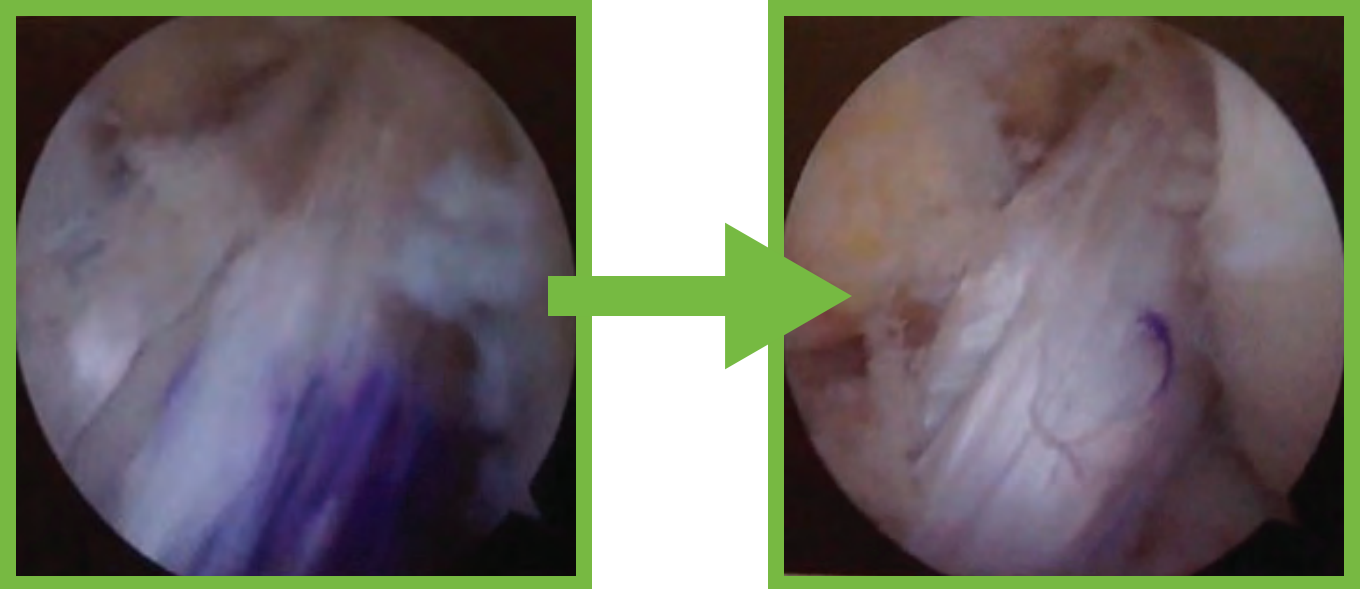


SURGICAL TECHNIQUE GUIDE

ACL Reconstruction – Femoral Fixation

Surgical Pearl (AM Portal): Position scope so that implant is fully visible to ensure proper insertion.

- 9 Insert the Tendon Loop until the marked line on the graft is no longer visible under scope. If necessary, the Strike Plate located on the back of the Gun may be gently tapped to facilitate insertion.



- 10 Squeeze the Trigger and disengage the Trigger Lock to release Trigger in preparation for deployment.



SURGICAL TECHNIQUE GUIDE

ACL Reconstruction – Femoral Fixation

Surgical Pearl: Apply slight forward pressure on the gun during deployment to ensure implant remains seated in tunnel.

11

Squeeze the Trigger to advance the Deployment Wings into the Tendon Loop. When the Trigger pull no longer exhibits resistance (i.e., bottoms out), then the Implant is fully deployed (normally 2 – 3 trigger pulls). The Trigger should be fully released at this point.



12

Confirm deployment of the implant by pulling slightly on the back of the Deployment Gun.

13

Push forward on the Knob Lock and remove the Retention Rod by rotating the Knob counterclockwise until fully disconnected from the Tendon Loop.



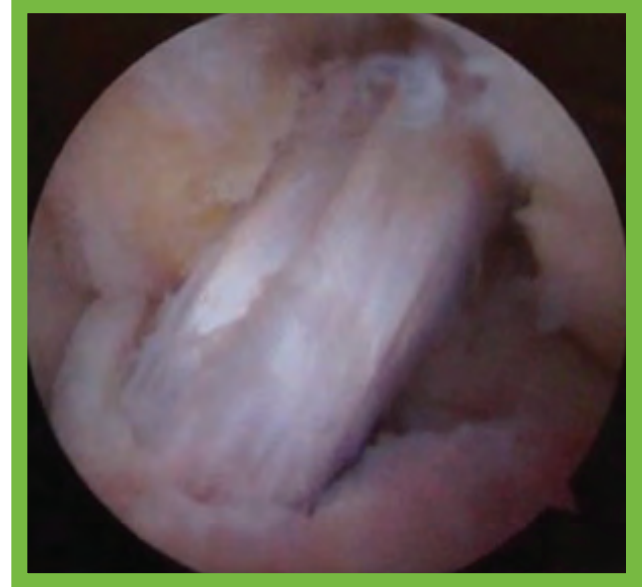
14

Discard the Gun.

SURGICAL TECHNIQUE GUIDE

ACL Reconstruction – Femoral Fixation

15 Confirm deployment and position of the ExoShape FEMORAL Soft Tissue Fastener under scope.



16 Complete surgical procedure as required.

PRODUCT CATALOG

EXOSHAPe FEMORAL SOFT TISSUE FASTENER

Part No.	Description
1600-00-008	ExoShape FEMORAL Cartridge, 8 mm x 21 mm
1600-00-009	ExoShape FEMORAL Cartridge, 9 mm x 21 mm
1600-00-010	ExoShape FEMORAL Cartridge, 10 mm x 21 mm
1600-00-011	ExoShape FEMORAL Cartridge, 11 mm x 21 mm

SINGLE USE ASSESSORIES

Part No.	Description
1101-02-000	Universal ACL Procedure Pack
1101-03-000	QuikWhip Green Co-Braid USP #2 Suture, Sterile
1101-04-000	QuikWhip White/Green Co-Braid USP #2 Suture, Sterile
1600-01-000	Tendon Shuttling Procedure Pack

CONMED, as the distributor of this device, does not practice medicine and does not recommend this or any other surgical technique for use on a specific patient. The surgeon who performs any procedure is responsible for determining and utilizing the appropriate techniques for such procedure for each individual patient. CONMED is not responsible for selection of the appropriate surgical technique to be utilized for an individual patient. Always refer to the package insert, product label, and/or product instructions prior to using any CONMED product.



CONMED Corporation
525 French Road, Utica, NY 13502

Local 727-392-6464
Toll Free 1-800-237-0169

CONMED.com
customer_service@CONMED.com

For further product information or to arrange a product demonstration, please contact your local CONMED representative or call Customer Service at 800-237-0169. Visit www.CONMED.com.