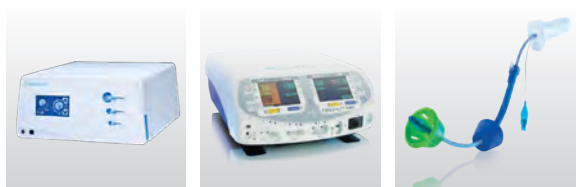




Advanced Surgical Product Catalog



To learn more about these and other innovative products,
call **800-448-6506** or visit **CONMED.com**

Ordering Information	2
----------------------------	---

ACCESS

AirSeal® iFS	
iFS Connector for Bottle Gas	4
iFS Carts, Valves, & Towers	4
High Pressure Hoses for Bottle Gas	4
iFS Connector for House/Central Gas	5
iFS Low Pressure Hoses for House/Central Gas	5
iFS Power Cords	6
iFS Preventative Maintenance and Service Plans	6
iFS Misc Parts/Accessories	6
AirSeal® Tube Sets & Access Ports	7

Access Ports

AnchorPort® Access Ports	8
--------------------------------	---

Trocars

Core Entree® II Trocars	9
Core™ Gold Series Trocars	12
Detachaport™ Trocars	14
Reflex® Trocars	16
BluView™ Trocars (OUS only)	17

Insufflation

50L Insufflator	18
Disposable Insufflation Needles	18
Tubing/Filter Set Systems	18

ENERGY

Argon Beam Coagulation (ABC®)

HelixAR™ with ABC® Technology

HelixAR™ System	20
Footswitches, Argon Gas Tanks, & Stacking Adapter	20
Laparoscopic Handpieces & Probes	21
Dissecting Electrodes	22
Bend-A-Beam®	22

Dispersive Electrodes

SureFit™	23
ThermoGard™	23
MacroLyte™	23

Electrosurgical Generators

System 5000™	24
System 2450™	25

Electrosurgical Accessories

GoldLine® Pencils	26
MicroNeedles	26
ValueBlue™ Pencils	27
Active Electrodes	28
Dispersive Electrodes	30
Suction Coagulators, Forceps, & Accessory Cables	32
Electrosurgical Cables & Adapters	33
Laparoscopic Electrodes & Accessory Cables	36

INSTRUMENTS

Laparoscopic Instruments

MicroLap® Instruments	38
DetachaTip® Instruments	41
Disposable Hand Instruments	44

Uterine Manipulator

VCare® Plus	45
VCare® DX Plus	45

Suction/Irrigation

Core™ Suction/Irrigation Systems	46
Universal Plus®	48
Irrigation Pumps	50

Ligation/Skin Stapler

Reflex® ELC530 Clip Applicators	51
Reflex® Series Skin Staplers/Extractors	51

Specimen Bags

Disposable Laparoscopic Specimen Bags	52
---	----

Specialty Products

Veress Needles	54
Puncture Closure Device	54
Kittner Blunt Dissectors	54
Anti-Fog Kit	54
Luer Port Cap	54

SMOKE MANAGEMENT

Surgical Smoke Evacuators

VisiClear®	56
Smoke Evacuation Tubing	56
ViroVac®	57
ClearView™	57
Porta PlumeSafe® 604	58
PlumeSafe® Turbo	59

Surgical Smoke Evacuation Pencils & Pencil Adapters

PlumePen® Smoke Evacuation Pencils	60
SnapVac® Smoke Evacuation Pencil Adapters	61
GoldVac® Smoke Evacuation Pencils	62
GoldVac® UltraClean Electrodes	62
ClearVac® Smoke Evacuation Pencils	63
PenAdapt® Smoke Evacuation Pencil Adapters	64
Smoke Evacuation Tubing & Accessories	65

Laparoscopic Solutions

PlumePort® ActiV®	69
PlumePort® SEO	69
PlumePort®	70
PlumePort® SEV	70
PlumePort® SE	70
LaparoVue® Visibility System	71
LaparoLight™ Veress Needle	71

Accessories

VueTip® Trocar Swab Accessory Kit	72
EZLink®	72
Pneumatic Footswitch	72
Virosafe® Fluid Trap.....	70
Direct Connect Cables	72
PlumePen® Pro Capture Ports.....	73
Y Adapter	73
Surgical Laser Masks	73
LaseAdapt® SC Contour TRL Hand Piece Adapter	73
LaseAdapt® ProFractional Therapy Hand Piece Adapter	73
LaseAdapt® Hand Piece Adapter Clips	73
Armstand	74
EvacuCart™	74
ViroVac® Wall Mount Kit	74

Filters - For Buffalo Filter Evacuators

ViroSafe® Filters.....	75
------------------------	----

Filters - For Wall & Portable Suction Systems

BILF150 Multi-Use In-Line Filter.....	78
BILF200 Multi-Use In-Line Filter.....	78

Filters - For Competitive Replacement

Berchtold TeleVac & TeleVac LT	79
Berchtold Phoenix XS or X3 Filter	79
Cooper Surgical System 6080	79
Edge S.A.F.E. System Filters & Pre-filters.....	79
Stackhouse ES-2000 System Filters & Pre-filters	80
Stackhouse LFA-100 & Point One System Filters	80
Stackhouse AirSafe VersaVac I & II Filter	80
Stackhouse MiniVac ST-1250	81
StrykeVac 1 & 2 ViroSafe® Filter.....	81
StrykeVac 3 ViroSafe® Filter	81
Surgimedics 7/8 in (22 mm) Pre-filter	81
Surgimedics 1-3/8 in (32 mm) Pre-filter	81
QuantaVac System Main Filter	82
TRUMPF ViroSafe® Filter (EasyVac Filter for TRUMPF EasyVac)....	82
Smoke Evacuator Filter for Stryker Neptune 2 and Neptune 3	82
Valleylab Optimumm System Filters & Pre-filters	82

CONTINUING EDUCATION COURSES	83
---	----

INDEX	86
--------------------	----

To Place Your Order

Please contact your local Sales Representative or Sales Office and provide a purchase order number, billing and shipping instructions, terms, product catalog number and description and valid CONMED quotation, and quantity and pricing to one of the following:

Customer Support

If you encounter a problem or need technical assistance, contact your CONMED Sales Representative or Customer Service. Refer to the Customer Service telephone numbers listed below.

CONMED U.S. Customer Service

Phone: +1(800) 448-6506 Fax: +1(800) 438-3051

CONMED International Customer Service

Phone: +1(315) 797-8375 Fax: +1(315) 735-6235

Tech Support: +1(800) 552-0138

AIRSEAL U.S. Customer Service

Phone: +1(877) 509-3947 (Option 1) Fax: +1(877) 509-3950

AIRSEAL U.S. Technical Support

Phone: +1(877) 509-3947 (Option 3)

AIRSEAL U.S. Medical Emergency

Phone: +1(877) 509-3947 (Option 4)

Terms and Conditions

All CONMED products are manufactured and produced in compliance with the following quality system standards:

- 21CFR 820, US FDA Quality System Regulation
- CMDCAS
- ISO13485
- European MDD, Annex II and V

All products may not be available for sale in your region. For information on pricing and product availability, please contact your local CONMED representative.

All prices and specifications are subject to change without notice.

All prices are F.O.F. Utica, New York; Centennial, Colorado; Atlanta, Georgia (F.O.B. Drop Shipment Points where applicable).

CREDIT TERMS: Net 30

Limited Service Warranty

For a period of two years following the date of shipment, CONMED Corporation warrants electrosurgical units against any defects in materials or workmanship and will repair or replace (at CONMED's discretion), the same without charge, provided that routine maintenance, as specified in the service manual, has been performed using replacement parts approved by CONMED. This warranty is void if the product is used in a manner or for purposes other than intended.

Extended warranties are available. Please contact your local CONMED Territory Manager, Customer Service, or Technical Services for more information.

Return Goods Policy

CONMED products may be returned for credit subject to the following:

1. Returned products, except products that are obsolete, discontinued, damaged, and specialty products, may be returned within 60 days after date of purchase. 50L Insufflator may be returned within 45 days after date of purchase.
2. A copy of the invoice number and date of purchase and a Return Authorization Number must accompany the returned goods with the reason for the return stated in writing. Contact CONMED Customer Service for the Return Authorization Number.
3. All returned goods will be subject to a minimum of 15% restocking charge. The exact amount of credit to be given, if any, will be determined by a Quality Assurance inspection. Sterile packaged products may be returned for credit only if returned in the original, unopened shelf package.
4. If the return is due to our error in shipping, full credit will be given.
5. All returns should be addressed as indicated by Return Authorization.

Extended Service Warranty

Extended warranty agreements for the AirSeal iFS may be purchased at any time – before, during or after the original warranty expiration.

Extended warranty agreements must be received before the original warranty expiration date of any subject electrosurgical unit.

Customers can maintain the warranty for up to seven years from date of shipment per the agreement terms listed in Option A of the Extended Warranty Form. Customers can also purchase an extended warranty per the terms listed in Option B of the Extended Warranty form.

If product is under warranty, the customer is responsible only for shipping the product to CONMED; CONMED is responsible for shipping the product back to the customer. If the product is out of warranty, the customer is responsible for shipping the product to and from CONMED.

Quality Policy

CONMED is committed to maintaining a quality system that provides for safe and effective products and services that meet the needs and requirements of our patients, customers, and company stakeholders.

ACCESS





AirSeal® System

The AirSeal iFS is the World's first "3 in 1" access management system and features unmatched capabilities in providing a stable pneumoperitoneum, constant smoke evacuation and valve-free access.

AirSeal® iFS

AirSeal iFS, 120V..... AS-iFS1

AirSeal iFS, 230V..... AS-iFS2

iFS Bottle Gas Connector (Required for bottle gas)

Required Connector

Must be installed on the iFS (37° flare fitting) iFS-BC1

iFS Bottle Gas Connector (Required for bottle gas)

Required Connector

Must be installed on the iFS (37° flare fitting) iFS-BC1

AirSeal® iFS Carts

Cart with Bottle Rack, Holds Two "E" Size CO2 Tanks..... AS-iCART

Cart with Bottle Rack, Holds Two "E" Size CO2 Tanks,
Switching Valve and Hoses included AS-iCART-V

Cart with Bottle Rack, Holds Two "E" Size CO2 Tanks,
and Two Mid-Bottle Bracket Supports AS-iCART-2R

Cart with Bottle Rack, Holds Two "E" Size CO2 Tanks,
and Two Mid-Bottle Bracket Supports, and Switching Valve
AS-iCART-V2R

Cart with Bottle Rack, Holds Two 6" (160mm) Bottle
Gas Tanks AS-iCART-6

Cart with Bottle Rack, Holds Two 6" (160mm) Bottle
Gas Tanks, and Switching Valve..... AS-iCART-6V

iFS Valve

Switching Valve, (2) Yoke Pin Index with 18" Supply Hoses,
(1) 36" Connection Hose, (1) 90° Swivel, (1) Mounting Bracket

..... iFS-Valve1

iFS Tower

(1) Yoke Pin Index mounted Switching Valve, (1) Yoke Pin Index with
18" Supply Hose and (1) 36" Connection Hose, (1) 90° Swivel

..... iFS-Tower1

Add-on: 18" High Pressure Hose to "E" Size CO2 Tanks..... iFS-HPH18

Add-on: 36" High Pressure Hose to "E" Size CO2 Tanks..... iFS-HPH36

Add-on: 72" High Pressure Hose to "E" Size CO2 Tanks..... iFS-HPH72

Add-on: 120" High Pressure Hose to "E" Size CO2 Tanks.....

..... iFS-HPH120

iFS High Pressure Hoses for Bottle Gas

36" High Pressure Hose with a Pin Index Yoke to connect to
"E" Size CO2 Tanks with a Pin Index Cylinder Valve..... iFS-HPH4

1.5m High Pressure Hose with a Pin Index Yoke to connect to

"E" Size CO2 Tanks with a DIN Bottle Gas Tanks iFS-HPH2

1.5m High Pressure Hose with a Pin Index Yoke to connect to

"E" Size CO2 Tanks with an ISO Bottle Gas Tanks iFS-HPH3

iFS House/Central Gas Connector (Required for house gas)

Required Connector: Must be installed on the iFS

DISS Fitting..... iFS-WC1

NIST Fitting (International)..... iFS-WC2

iFS Low Pressure Hoses for House (Central) Gas Domestic

36" Low Pressure Hose to connect to a DISS Wall Connection and iFS-WC1 Connector.....SGQ-584CE

60" Low Pressure Hose to connect to a DISS Wall Connection and iFS-WC1 Connector.....SGQ-586CE

180" Low Pressure Hose to connect to a DISS Wall Connection and iFS-WC1 Connector.....SGQ-582CE

240" Low Pressure Hose to connect to a DISS Wall Connection and iFS-WC1 Connector.....SGQ-583CE

390" Low Pressure Hose to connect to a DISS Wall Connection and iFS-WC1 Connector.....SGQ-585CE

240" Low Pressure Hose to connect to a Chemetron Wall Connection and iFS-WC1 Connector.....SGQ-587

iFS Low Pressure Hoses for House (Central) Gas International

3m Low Pressure Hose to connect to a DIN Wall Connection with iFS-WC2 Connector..... SGQ-592CE

5m Low Pressure Hose to connect to a DIN Wall Connection with iFS-WC2 Connector..... SGQ-593CE

3m Low Pressure Hose to connect to a AGA Wall Connection with iFS-WC2 Connector..... SGQ-594CE

5m Low Pressure Hose to connect to a AGA Wall Connection with iFS-WC2 Connector..... SGQ-595CE

3m Low Pressure Hose to connect to a NF Wall Connection with iFS-WC2 Connector..... SGQ-588CE

5m Low Pressure Hose to connect to a NF Wall Connection with iFS-WC2 Connector..... SGQ-589CE

3m Low Pressure Hose to connect to a UNI Wall Connection with iFS-WC2 Connector..... SGQ-590CE

5m Low Pressure Hose to connect to a UNI Wall Connection with iFS-WC2 Connector..... SGQ-591CE



DIN



AGA



NF



UNI



iFS Preventative Maintenance and Service Plans

2 Year Preventative Maintenance.....	iFS-2PM
12 Month Service Plan	iFS-SP12
24 Month Service Plan	iFS-SP24
36 Month Service Plan	iFS-SP36
48 Month Service Plan	iFS-SP48

AirSeal iFS Power Cords

For AS-iFS1	
B Type Cord	AB30630
For AS-iFS2	
E Type Cord	AB30631
For AS-iFS2	
F Type Cord	AB30632
For AS-iFS2 (South Korea)	
F-KR Type Cord	AB30678
For AS-iFS2	
G Type Cord	AB30633
For AS-iFS2 (Saudi Arabia)	
G-SA Type Cord	AB30634
For AS-iFS2	
I-UV Type Cord	AB30636
For AS-iFS2	
L Type Cord	AB30637
For AS-iFS2	
M Type Cord	AB30638
For AS-iFS2	
K Type Cord	AB30639
For AS-iFS2	
H Type Cord	AB30640

AirSeal iFS Miscellaneous Parts and Accessories

iFS Fuse, 10 Amp	iFS-Fuse
iFS Connector O-Ring.....	iFS-ORING
Pin Index Yoke Seal, 10 Pack	iFS-SEAL
Connector for High Pressure Gas Hose	iFS-CON1
Upper Gas Bottle Assembly for use on -2R Carts.....	SQ-22213
Switching Valve for Low Pressure House Gas	iFS-HGSV
160mm Bottle Rack Base for use on -6 Carts	SQ-85601038
Pin Index Yoke JIC Male.....	SGQ-545
Pin Index Yoke 1/4 NFT Male	SCG-547
Valve Bracket for use on -V Carts and -2R Carts	iCART-BRACKET

AirSeal Filtered Tube Sets

The AirSeal iFS is capable of operating in three distinct modes, each of which uses a specific filtered tube set to maximize system performance.

- For use with iFS AirSeal Mode
Tri-Lumen Filtered Tube Set, 6/Box ASM-EVAC1
- For use with iFS Smoke Evacuation Mode
Bifurcated Smoke Evac Filtered Tube Set, 6/Box SEM-EVAC
- For use with iFS Standard Insufflation Mode,
Single Lumen Filtered Tube Set, 10/Box SIM-TUB

AirSeal® Access Ports

- Valve-free access to abdominal cavity
- Intact specimen removal

5mm Access Port and Low Profile Obturator with Bladeless Optical Tip, 75mm Length, 6/Box..... iAS5-75LP

5mm Access Port and Low Profile Obturator with Bladeless Optical Tip, 100mm Length, 6/Box..... iAS5-100LP

5mm Access Port and Low Profile Obturator with Bladeless Optical Tip, 120mm Length, 6/Box iAS5-120LP

5mm Smooth Access Port with Blunt Tip, 150mm Length (for use with single site surgical platforms), 6/Box iASB5-150

8mm Access Port and Low Profile Obturator, with Bladeless Optical Tip, 100mm Length, 6/Box iAS8-100LP

8mm Access Port and Low Profile Obturator, with Bladeless Optical Tip, 120mm Length, 6/Box iAS8-120LP

12mm Access Port and Palm Grip Obturator, with Bladeless Optical Tip, 100mm Length, 6/Box iAS12-100LPi

12mm Access Port and Obturator, with Blunt Tip, 100mm Length, 6/Box iASB12-100

12mm Access Port and Palm Grip Obturator, with Bladeless Optical Tip, 120mm Length, 6/Box iAS12-120LPi

12mm Access Port and Obturator, with Blunt Tip, 120mm Length, 6/Box iASB12-120

12mm Access Port and Obturator with Bladeless Optical Tip, 150mm Length, 6/Box iAS12-150



ASM-EVAC1

SEM-EVAC

SIM-TUB



iAS5-75LP



iAS5-100LP



iAS5-120LP



iASB5-150



iAS8-100LP



iAS8-120LP



iAS12-100LPi



iASB12-100



iAS12-120LPi



iASB12-120



iAS12-150



AP5-75



AP5-75-SILK



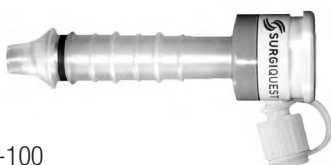
APCi5-75



AP5-100



AP5-100-SILK



APCi5-100

AnchorPort® Access Ports

Automatically self-adjusts to patient's abdominal wall thickness

- Low profile housing
- Self-adjusting elastomeric sheath
- Bladeless tip
- Optical scope lock

AnchorPort 5mm Trocar w/ Bladeless Optical Tip Obturator and Cannula with Insufflation Port, 75mm Length, 6/BoxAP5-75

AnchorPort 5mm, Single Incision Laparoscopy Kit, 75mm Length, 6/Box AP5-75-SILK

AnchorPort 5mm Cannula with Insufflation Port, 75mm Length, 12/Box APCi5-75

AnchorPort 5mm Trocar with Bladeless Optical Tip Obturator and Cannula with Insufflation Port, 100mm Length, 6/Box AP5-100

AnchorPort 5mm Single Incision Laparoscopy Kit, 100mm Length, 6/BoxAP5-100-SILK

AnchorPort 5mm Cannula with Insufflation Port, 100mm Length, 12/Box APCi5-100

CORE ENTREE® II Reusable Cannula and Disposable Trocar Modular System

Cannula, Reusable

5mm Cannula, 100mm length	CD1609
7/8mm Cannula, 90mm length	CD1607
10mm Cannula, 110mm length	CD1610
10/12mm Cannula, 100mm length	CD1612

Cannula with Fascia Threads, Reusable

5mm Cannula, 55mm length without stopcock.....	CD1605FH
5mm Cannula, 55mm length	CD1606FH
5mm Cannula, 100mm length without stopcock.....	CD1608FH
5mm Cannula, 100mm length	CD1609FH
10mm Cannula, 110mm length	CD1610FH
10/12mm Cannula, 100mm length	CD1612FH

Trocar Procedure Kits

5mm Trocar Procedure Kit	
1 each 5mm Trocar, 55mm length,	
2 each 5mm Cannula Valve Sterile, 10 kits/box.....	CD6300P

5mm Trocar Procedure Kit	
1 each 5mm Trocar, 100mm length,	
2 each 5mm Cannula Valve Sterile, 10 kits/box.....	CD6350P

5mm Trocar Procedure Kit	
1 each 5mm Audible Dilating Trocar, 55mm length,	
2 each 5mm Cannula Valve Sterile, 10 kits/box.....	CD7100G

5mm Trocar Procedure Kit	
1 each 5mm Audible Dilating Trocar, 100mm length,	
2 each 5mm Cannula Valve, Sterile, 10 kits/box.....	CD7150G

7/8mm Trocar Procedure Kit	
1 each 7/8mm Audible Dilating Trocar, 90mm length,	
1 each 5-12mm Valve/Reducer Sterile, 10 kits/box	CD7308G

Lap Chole 5 and 10mm Trocar Procedure Kit	
1 each 10mm Audible Dilating Trocar, 110mm length,	
1 each 5-12mm Valve/Reducer,	
1 each 5mm Audible Dilating Trocar, short length,	
3 each 5mm Cannula Valve Sterile, 10 kits/box.....	CD7420G



CD1612



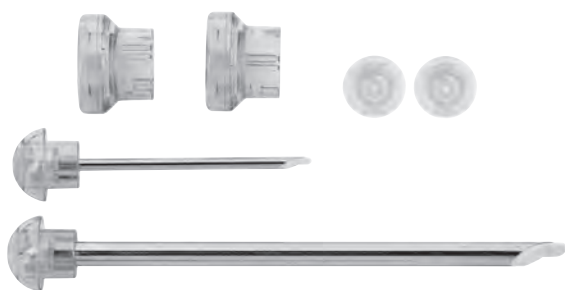
CD1605FH



CD1606FH



CD7150G



CD7430G



CD7500G



CD7565G



CD775



CD513



CD612



CD650

CORE ENTREE® II Trocar Procedure Kits**Lap Chole 5 and 10mm Trocar Procedure Kit**

1 each 10mm Audible Dilating Trocar, 110mm length
 2 each 5-12mm Valve/Reducer, 1 each 5mm Audible Dilating Trocar, 55mm length, 2 each 5mm Cannula Valve Sterile,
 10 kits/box CD7430G

Lap Chole 5 and 10mm Trocar Procedure Kit

1 each 10mm Audible Dilating Trocar, 110mm length
 2 each 5-12mm Valve/Reducer, 1 each 5mm Audible Dilating Trocar, 100mm length, 2 each 5mm Cannula Valve Sterile,
 10 kits/box CD7435G

10mm Trocar Procedure Kit

1 each 10mm Audible Dilating Trocar, 110mm length
 1 each 5-12mm II Valve/Reducer Sterile,
 10 kits/box CD7465G

Lap Chole 5 and 10/12mm Trocar Procedure Kit

1 each 10/12mm Audible Dilating Trocar, 100mm length
 2 each 5-12mm II Valve/Reducer, 1 each 5mm Trocar, 100mm length, 2 each 5mm Cannula Valve Sterile,
 10 kits/box CD7513G

Lap Chole 5 and 10/12mm Trocar Procedure Kit

1 each 10/12mm Audible Dilating Trocar, 100mm length
 2 each 5-12mm Valve/Reducer,
 1 each 5mm Audible Dilating Trocar, 100mm length
 2 each 5mm Cannula Valve Sterile,
 10 kits/box CD7535G

5 and 10/12mm Trocar Procedure Kit

1 each 10/12mm Audible Dilating Trocar, 100mm length
 1 each 5mm Trocar, 100mm length, 2 each 5mm Cannula Valve Sterile, 10 kits/box CD7500G

10/12mm Trocar Single Puncture Procedure Kit

1 each 10/12mm Audible Dilating Trocar, 100mm length
 1 each 5mm Valve/Reducer Sterile, 10 kits/box CD7565G

10/12mm Audible Dilating Trocar with shield, 100mm length

Sterile, 10 each/box CD7012G

10mm Audible Dilating Trocar with shield, 110mm length

Sterile, 10 each/box CD7010G

7/8mm Audible Dilating Trocar with shield, 90mm length

Sterile, 10 each/box CD7008G

5-12mm Valve/Reducer

Sterile, 10 each/box CD775

5/10/12mm Universal Reducer

3-Hole Universal Reducer Sterile, 10 each/box. CD513

5/10/12mm Valve/Flip-Top Reducer

Sterile, 10 each/box CD612

5mm Cannula Valve

Sterile, 10 each/box CD650

CORE ENTREE® II Accessories

Open Laparoscopy Adapters

Open Laparoscopy Adapter and 5mm Blunt Tip Trocar
5mm Pediatric, 100mm length, Reusable, 1 each/box CD1402

Open Laparoscopy Adapter and 5mm Blunt Tip Trocar
5mm Adult, 100mm length, Reusable, 1 each/box CD1404

Open Laparoscopy Adapter and Blunt Tip Trocar
10/12mm, 100 length, Reusable, 1 each/box CD1406

Fascia Anchor Adapter

5/5.5mm Fascia Anchor Adapter
Reusable, 1 each/box CD405

7/8mm Fascia Anchor Adapter
Reusable, 1 each/box CD408

10mm Fascia Anchor Adapter
Reusable, 1 each/box CD411

10/12mm Fascia Anchor Adapter
Reusable, 1 each/box CD412

Cannula Obturator

10mm Radiotranslucent Rod for Cholangiograms
Reusable, 1 each/box CD220

Trocars

7/8mm Trocar, 90mm length, Reusable, 1 each/box CD5080P-I

10mm Trocar, 110mm length, Reusable, 1 each/box

NOTE: To be used only with 5/10/12mm

Cannula Valve (CD612) CD4011P-I



CD1406



CD411



CD220



CD4011P-I



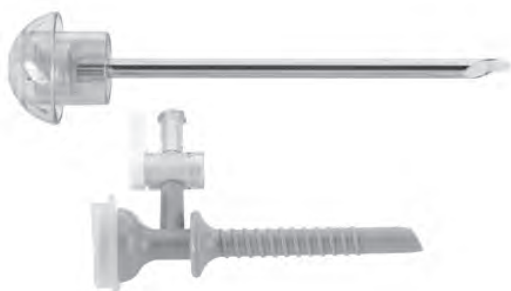
Trocar and Cannula



Trocar and Cannula with Stopcock



Audible Dilating Trocar and Cannula



Audible Dilating Trocar and Cannula with Stopcock

CORE® Gold Series Disposable Trocar and Cannula

5mm Trocar and Cannula, 50mm Length (Single Pack) Sterile, 10 each/box	CD1705
5mm Trocar and Cannula, 50mm Length (Dual Pack) Sterile, 10 each/box	CD1706
5mm Trocar and Cannula with Stopcock, 50mm Length (Single Pack) Sterile, 10 each/box	CD1708
5mm Trocar and Cannula, 65mm Length (Single Pack) Sterile, 10 each/box	CD1722
5mm Trocar and Cannula, 65mm Length (Dual Pack) Sterile, 10 each/box	CD1723
5mm Trocar and Cannula with Stopcock, 65mm Length (Single Pack) Sterile, 10 each/box	CD1728
5mm Trocar and Cannula with Stopcock, 65mm Length (Dual Pack) Sterile, 10 each/box	CD1729
5mm Trocar and Cannula with Stopcock, 100mm Length (Single Pack) Sterile, 10 each/box	CD1735

CORE® Gold Series Audible Dilating Trocar and Cannula

5mm Audible Dilating Trocar and Cannula 65mm Length (Single Pack), Sterile, 10 each/box	CD1922
5mm Audible Dilating Trocar and Cannula 65mm Length, (Dual Pack), Sterile, 10 each/box	CD1923
5mm Audible Dilating Trocar and Cannula with Stopcock 65mm Length, (Single Pack), Sterile, 10 each/box	CD1928
5mm Audible Dilating Trocar and Cannula with Stopcock 65mm Length, (Dual Pack), Sterile, 10 each/box	CD1930
5mm Audible Dilating Trocar and Cannula with Stopcock 100mm Length, (Single Pack), Sterile, 10 each/box	CD1935
5mm Audible Dilating Trocar and Cannula with Stopcock 100mm Length, (Dual Pack), Sterile, 10 each/box	CD1937

CORE® Gold Series Disposable Trocar and Cannula

5mm Disposable Cannula, 50mm Length
Sterile, 10 each/box CD1907

5mm Disposable Cannula with Stopcock, 50mm Length
Sterile, 10 each/box CD1909

7/8mm Audible Dilating Trocar and Cannula with Stopcock
90mm Length, Sterile, 10 each/box..... CD1940

10mm Audible Dilating Trocar and Cannula with Stopcock
110mm Length, (Single Pack), Sterile, 10 each/box..... CD1950

10mm Audible Dilating Trocar and Cannula with Stopcock
110mm Length, (Dual Pack), Sterile, 10 each/box CD1952

10/12mm Audible Dilating Trocar and Cannula with Stopcock
100mm Length, (Single Pack), Sterile, 10 each/box..... CD1960

10mm Cannula with Stopcock, 110mm length
Sterile, 10 each/box CD1951

10/12mm Cannula with Stopcock, 100mm length
Sterile, 10 each/box CD1961

10/12mm Open Laparoscopic Blunt Trocar and Cannula with
adjustable suture wing, 100mm length Sterile,
10 each/box CD1982

CORE® Gold Series Trocar and Cannula Procedure Kits

Lap Chole 5 and 10mm Trocar and Cannula Procedure Kit
1 each 10mm Audible Dilating Trocar, 110mm length
2 each 10mm Disposable Cannula with Stopcock, 110mm length
1 each 5mm Audible Dilating Trocar, 65mm length
2 each 5mm Disposable Cannula with Stopcock, 65mm length
1 each Anti-fog/Lubrication Kit
Sterile, 6 kits/box CD1970

Lap Chole 5 and 10mm Trocar and Cannula Procedure Kit
1 each 10mm Audible Dilating Trocar, 110mm length
2 each 10mm Disposable Cannula with Stopcock, 110mm length
1 each 5mm Audible Dilating Trocar, 100mm length
2 each 5mm Disposable Cannula with Stopcock, 100mm length
1 each Anti-fog/Lubrication Kit
Sterile, 6 kits/box CD1972

Lap Chole 5 and 10mm Trocar and Cannula Procedure Kit
1 each 10/12mm Audible Dilating Trocar, 100mm length
2 each 10/12mm Disposable Cannula with Stopcock, 100mm length
1 each 5mm CORE Audible Dilating Trocar, 100mm length
2 each 5mm Disposable Cannula with Stopcock, 100mm length
1 each Anti-fog/Lubrication Kit
Sterile, 6 kits/box CD1977



CD1907



CD1960



CD1961



CD1982



1-7002



1-7013



1-7045

DetachaPort™ Multi-use Repposable Trocars and Accessories

Multi-use Titanium Cannulas

Cannula, 5mm, 70mm length, Non-Sterile	1-7001
Cannula, 5mm, 100mm length, Non-Sterile	1-7002
Cannula, 10mm, 100mm length, Non-Sterile	1-7003
Cannula, 12mm, 100mm length, Non-Sterile	1-7005
Threaded Cannula, 5mm, 70mm length, Non-Sterile	1-7007
Threaded Cannula, 5mm, 100mm length, Non-Sterile	1-7008
Threaded Cannula, 10mm, 100mm length, Non-Sterile	1-7009
Threaded Cannula, 12mm, 100mm length, Non-Sterile	1-7011

Single-use Seals

Seal, 5mm, Each seal includes one stopcock.	
Sterile, 10/cs	1-7013
Seal, 10/12mm diameter with reducer.	
Each seal includes one stopcock. Sterile, 10/cs	1-7044

Single-use Converters

UCSII™ Universal Converter, 5mm, 10/12mm	
Each seal includes one stopcock. Sterile, 10/cs	1-7045

DetachaPort™ Multi-use Repposable Trocars and Accessories

Single-use Obturator and Seal Sets

Obturator and Seal Set

1 each 5mm obturator (70mm length) and 1 each 5mm seal

Sterile, 10/cs.

(Each set includes one stopcock for every seal.)..... 1-7016

Obturator and Seal Set

1 each 5mm obturator (70mm length) and 2 5mm seals

Sterile, 10/cs.

(Each set includes one stopcock for every seal.)..... 1-7017

Obturator and Seal Set

1 each 5mm obturator (100mm length) and 1 each 5mm seal

Sterile, 10/cs.

(Each set includes one stopcock for every seal.)..... 1-7018

Obturator and Seal Set

1 each 5mm obturator (100mm length) and 2 5mm seals

Sterile, 10/cs.

(Each set includes one stopcock for every seal.)..... 1-7019

Obturator and Seal Set

1 each 10mm obturator (100mm length) and 1 each 10/12mm seal with reducer Sterile, 10/cs.

(Each set includes one stopcock for every seal.)..... 1-7020

Obturator and Seal Set

1 each 10mm obturator (100mm length) and 2 10/12mm seals with reducers Sterile, 10/cs.

(Each set includes one stopcock for every seal.)..... 1-7021

Obturator and Seal Set

1 each 12mm obturator (100mm length) and 1 each 10/12mm seal with reducer Sterile, 10/cs.

(Each set includes one stopcock for every seal.)..... 1-7024

Obturator and Seal Set

1 each 12mm obturator (100mm length) and 2 10/12mm seals with reducers Sterile, 10/cs.

(Each set includes one stopcock for every seal.)..... 1-7025

Obturator and Seal Set

1 each 12mm obturator (100mm length) and 3 10/12mm seals with reducers Sterile, 10/cs.

(Each set includes one stopcock for every seal.)..... 1-7028

Multi-use Open Entry Obturators

Open Entry Obturator, 12mm, 100mm length,

Non-Sterile 1-7055

Multi-use Open Entry Wedge

Open Entry Trocar Wedge, 12mm, Non-Sterile..... 1-7057

Open Entry Trocar Wedge

Wedge silicone, seal replacement. Non-Sterile, 10/pkg..... 1-7052



1-7016



1-7025



1-7055



1-7057



16220



16162



16150



1700



1705

Reflex® Bladed/Shielded Trocar Systems and Accessories

Surgical Trocar with Internal Shield, 5mm Single-use, Sterile, 6/cs	16050
Surgical Trocar with Internal Shield, 10/11mm Single-use, Sterile, 6/cs	16160
Surgical Trocar with Internal Shield, 10/12mm Single-use, Sterile, 6/cs	16020
Long Surgical Trocar with Internal Shield, 10/12mm 150mm length, Single-use, Sterile, 6/cs	16220
Surgical Trocar Sleeve, 5mm Single-use, Sterile, 6/cs	16052
Surgical Trocar Sleeve, 10/11mm Single-use, Sterile, 6/cs	16162
Surgical Trocar Sleeve, 10/12mm Single-use, Sterile, 6/cs	16022
Blunt Tip (Hasson Style) Surgical Trocar, 10/11mm Single-use, Sterile, 6/cs	16150
Surgical Trocar with Universal Converter, 5-11mm Single-use, Sterile, 6/cs	16911
Surgical Trocar with Universal Converter, 5-12mm Single-use, Sterile, 6/cs	16912
Universal Converter, 5-12mm Single-use, Sterile, 6/cs	1700
Converter, 5mm Single-use, Sterile, 6/cs	1705
Converter, 7/8mm Single-use, Sterile, 6/cs.	1778

BluView™ Trocars (OUS Only)

Single use, disposable trocar

Optical Trocars

5mm Trocar and Cannula, 70mm Length	BV-5X70
5mm Trocar and Cannula, 100mm Length	BV-5X100
5mm Obturator and Cannula, 150mm Length	BV-5X150
11mm Obturator and Cannula, 70mm Length	BV-11X70
11mm Trocar and Cannula, 100mm Length	BV-11X100
11mm Obturator and Cannula, 150mm Length	BV-11X150
12mm Obturator and Cannula, 70mm Length	BV-12X70
12mm Trocar and Cannula, 100mm Length	BV-12X100
12mm Obturator and Cannula, 150mm Length	BV-12X150

Bladeless Trocars

15mm Obturator and Cannula, 100mm Length	BV-15X100BLS
--	--------------

Bladed Trocars

5mm Trocar and Cannula, 70mm Length	BV-5X70-BLD
5mm Trocar and Cannula, 100mm Length	BV-5X100-BLD
5mm Obturator and Cannula, 150mm Length	BV-5X150-BLD
11mm Trocar and Cannula, 100mm Length	BV-11X100-BLD
11mm Obturator and Cannula, 150mm Length	BV-11X150-BLD
12mm Obturator and Cannula, 70mm Length	BV-12X70-BLD
12mm Trocar and Cannula, 100mm Length	BV-12X100-BLD
12mm Obturator and Cannula, 150mm Length	BV-12X150-BLD
15mm Obturator and Cannula, 100mm Length	BV-15X100-BLD

Blunt Tip Trocars

11mm Trocar and Cannula, 100mm Length	BV-11X100-HSS
12mm Trocar and Cannula, 100mm Length	BV-12X100-HSS

Universal Cannulas (for use with Optical or Bladed Obturators)

5mm Cannula, 70mm Length	BV-5X70-CAN
5mm Cannula, 100mm Length	BV-5X100-CAN
11mm Cannula, 70mm Length	BV-11X70-CAN
11mm Cannula, 100mm Length	BV-11X100-CAN
11mm Cannula, 150mm Length	BV-11X150-CAN
12mm Cannula, 70mm Length	BV-12X70-CAN
12mm Cannula, 100mm Length	BV-12X100-CAN
12mm Cannula, 150mm Length	BV-12X150-CAN





GS2000



GS1012



LLVN12012

50L Insufflator

50L Insufflator	GS2000
Hose and Yoke for CO ₂ , E-Tank, 4'	GS1052
DIN477, Hose and Connection for CO ₂ Tank.....	GS202K
DISS Hose for "wall" CO ₂ 2'	GS1053
Dual Tank Shuttle Valve System.....	GS2050
Power Cord, 155 VAC 6'	C7104
Power Cord, 230 VAC 10'	C7105
CO ₂ Warmer, in-line, reusable	GS1012
Cleaning Brushes for Warmer assembly, 10/pkg	GS1054
Adapter, CPC to IEC (for C7011 tubing	GS1050
Adapter, CPC to Luer (for C7010 tubing.....	GS1051
Insufflation Tubing Set, disposable, CPC/Luer, w/filter	GS1016
Insufflation Tubing Set, disposable, Luer/Luer, w/filter C7011 tubing requires a GS1050 adapter	C7010
Insufflation Tubing Set, disposable, IEC/Luer, w/filter C7011 tubing requires a GS1050 adapter	C7011
CPS Tubing Set, disposable, w/filter.....	GS1013

Disposable Insufflation Needles and Tubing/Filter Set Systems

LaparoLight™ Veress Needle, 12cm 12/cs	LLVN12012
LaparoLight™ Veress Needle, 15cm 12/cs	LLVN15012
Pneumoperitoneum Insufflation Needle, 14 gauge, 12cm, with stainless steel tip guard and band indicator 10/cs	60-6050-001
Pneumoperitoneum Insufflation Needle, 14 gauge, 15cm, with stainless steel tip guard and band indicator 10/cs	60-6050-002
Insufflation Tubing (10' length) and 0.1 micron hydrophobic filter assembly with suction type connector 10/cs	60-6050-097
Insufflation Tubing (10' length) and 0.1 micron hydrophobic filter assembly with "O" ring connector 10/cs	60-6050-098
Insufflation Tubing (10' length) and 0.1 micron hydrophobic filter assembly with luer lock connector 10/cs	60-6050-099

ENERGY





60-8800-SYS



60-8480-001



60-8849-001

HelixAR™ Electrocautery Generator with Argon Beam Coagulation (ABC®)

The HelixAR combines the advanced specialty modes of a premium ESU with the benefits of CONMED's latest ABC® Technology and is intended for use in both open and laparoscopic procedures.

HelixAR System

HelixAR System, ABC Generator and Cart 60-8800-SET

Includes HelixAR System, ABC Generator and Cart, with Monopolar and Bipolar Footswitch 60-8800-SYS

Footswitches

ABC Single Pedal Footswitch, 15' 60-8475-001

ABC Single Pedal Footswitch, 30' 60-8470-001

HelixAR Wireless Footswitch Kit (Monopolar & ABC Footswitch, AA Batteries, Receiver/Antenna, Operator's Manual*) 60-8480-001

Monopolar Dual Pedal Footswitch, 15' 60-6700-001

Bipolar Single Footswitch, 15' 60-5103-002

Argon Gas Tanks

D Size with 33 Cubic Feet (934.46 liters) capacity 99.998%

Pure Argon Gas included 136050

Empty D Size with 33 Cubic Feet (934.46 liters) capacity 136051

Stacking Adapter

Adapter allows System 5000 ESUs to be mounted to HelixAR on a Mobile Pedestal 60-8849-001

* Assembly required. Refer to Wireless Footswitch Operator's Manual for more information.

ABC® Handpieces and Laparoscopic Probes

Designed for versatility and performance, ABC® Handpieces and Probes enable surgeons to extend the benefits of ABC Technology to their patients. Each device is carefully designed for optimal clinical performance in a variety of open or laparoscopic procedures.

Hand Control (Disposable)

Triple Option Hand Control Handpiece
with 10' (3.05m) cord. Allows use of Monopolar Cut,
Coagulation and ABC..... 130321

Single Function Hand Control Handpiece
with 10' (3.05m) cord* 130344

Foot Control (Disposable)

45° Angled ABC Foot Control Handpiece
with 10' (3.05m) cord* 130345

Foot Control (Reusable)

Reusable ABC Foot Control Handpiece
with 10' (3.05m) cord. To be used with Single use ABC Nozzle
(130343)..... 130500

Single use ABC Nozzle for use with Reusable ABC Handpiece
(130500)* 130343

Foot Control Laparoscopic Probes (Disposable)

Laparoscopic 10mm ABC Probe with 10' (3.05m) cord.
28cm working length* 130342

Laparoscopic 5mm ABC Probe with 10' (3.05m) cord.
28cm working length..... 160655

Hand Control Laparoscopic Probes (Disposable)

Laparoscopic 5mm ABC Probe with 10' (3.05m) cord.
28cm working length..... 160656

Laparoscopic 5mm ABC Probe with 10' (3.05m) cord.
36cm working length..... 160636

Laparoscopic 5mm ABC Probe with 10' (3.05m) cord.
44cm working length..... 160644

*Can be used with ABC Dissecting Electrodes





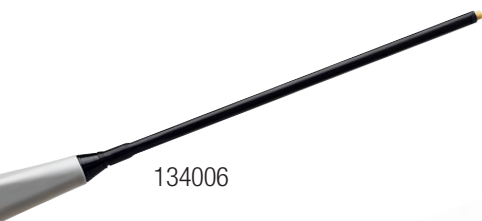
139330



139331



134003



134006



134009

ABC Dissecting Electrodes

ABC Technology in contact mode allows surgeons to dissect while employing the benefits of Argon Beam Coagulation. Surgeons can also continue to use ABC in non-contact mode simply by pulling the ABC Dissecting Electrodes away from tissue.

Simple to use, ABC Dissecting Electrodes attach to a CONMED ABC handpiece to convert from Argon Beam Coagulation to Argon Beam Dissect. By forcing argon gas over an electrode in contact or non-contact mode, ABC Dissecting Electrodes may provide the following benefits for surgical procedures:

- ABC Dissecting Blade Electrode converts Argon Beam Coagulation to Argon Beam Dissect, 20/Case 139330
- ABC Dissecting Blunt Needle Electrode converts Argon Beam Coagulation to Argon Beam Dissect, 20/Case..... 139331

Bend-A-Beam®

- Reduced blood loss
- Effective on high impedance tissue such as bone
- Reduced smoke plum for better visualization

- 3" (7.6cm) Bend-a-Beam Single Function Malleable ABC Hand Control Handpiece with 10' (3.05m) Cord. Allows Use of Monopolar ABC Coagulation. Single Use, Sterile 10/case 134003
- 6" (15.2cm) Bend-a-Beam Single Function Malleable ABC Hand Control Handpiece with 10' (3.05m) Cord. Allows Use of Monopolar ABC Coagulation. Single Use, Sterile 10/case 134006
- 9" (22.8cm) Bend-a-Beam Single Function Malleable ABC Hand Control Handpiece with 10' (3.05m) Cord. Allows Use of Monopolar ABC Coagulation. Single Use, Sterile 10/case 134009

Dispersive Electrodes

CONMED's Dispersive Electrodes are globally renowned for their safety, quality, and comfort. With three brands of dual-and single-foil options, CONMED suits a multitude of patients, technologies, and budgets.

SureFit™ Dual Dispersive Electrodes

SureFit Dual Dispersive Electrode (for patients > 4.8 lbs.),
Single use, Pre-attached 10' (3.05m) Cable,
100/case, 25/box.....410-2000

SureFit Dual Dispersive Electrode (for patients > 4.8 lbs.),
Single use, Pre-attached 15' (4.575m) Cable,
100/case, 25/box410-2100

SureFit Dual Dispersive Electrode (for patients > 4.8 lbs.),
Single use, without Cable, resealable, 5-pack pouch
(use reusable cable # T229), 100/case, 5/pkg410-2200

ThermoGard® Plus ABC Dispersive Electrodes

Adult Dual Dispersive Electrode (for patients >15 kg),
Single use, Pre-attached 10' (3.05m) Cable, 40/case 1/pkg7-382

Pediatric Dual Dispersive Electrode (for patients 5-15 kg),
Single use, Pre-attached 10' (3.05m) Cable, 40/case 1/pkg.....7-383

Adult Single Dispersive Electrode (for patients >15 kg),
Single use, Pre-attached 10' (3.05m) Cable, 40/case 1/pkg.....7-384

ThermoGard® Dispersive Electrodes

Adult Single Dispersive Electrode (for Patients >15 kg), Single Use,
Pre-attached 10' (3.05m) Cable, 80/case 1/pkg51-7810

Adult Dual Dispersive Electrode (for Patients >15 kg), Single Use,
Pre-attached 10' (3.05m) Cable, 80/case 1/pkg51-7310

Adult Dual Dispersive Electrode (for Patients >15 kg), Single use,
without Cable (use cable T-229), 80/case 1/pkg.....51-7410

Pediatric Dual Dispersive Electrode (for Patients 5-15 kg), Single use,
Pre-attached 10' (3.05m) Cable, 80/case 1/pkg51-7710

MacroLyte® Dispersive Electrodes

Adult Single Dispersive Electrode (for patients >15 kg), Single use,
Pre-attached 10' (3.05m) Cable, 100/case, 25/box.....400-2100

Adult Single Dispersive (for patients >15 kg) No Cable
(Use Reusable Cable T228 - pg. 21) 100/case 50/box 1/pkg.....400-2349

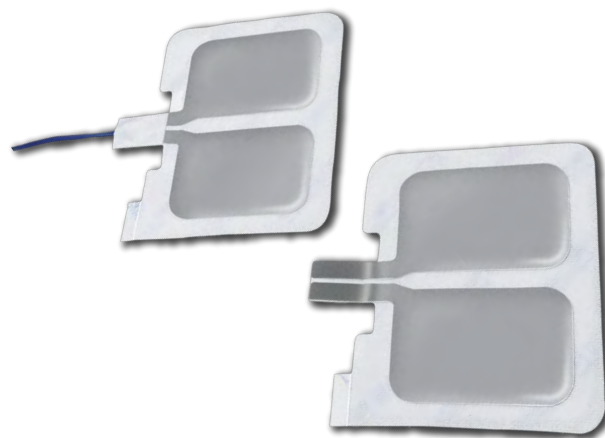
Adult Single Dispersive Electrode (for patients >15 kg), Single use,
without cable, resealable 5-pack pouch (use reusable cable # T229),
100/case, 20/box, 5/pkg400-2700

Pediatric Single Dispersive Electrode (for patients 5-15 kg), Single use,
Pre-attached 10' (3.05m) Cable, 100/case, 25/box.....425-2200

Pediatric Dual Dispersive Electrode (for patients 5-15 kg), Single use,
Pre-attached 10' (3.05m) Cable, 100/case, 25/box425-2508

Premie Single Dispersive Electrode (for patients < 5 kg), Single use,
Pre-attached 10' (3.05m) Cable, 40/case, 10/box440-2400

Infant Single Dispersive Electrode (for patients 5-15 kg), Single use,
Pre-attached 10' (3.05m) Cable, 60/case, 15/box450-2300



SureFit™



ThermoGard®



MacroLyte®



60-8030-001



System 5000™ Electrosurgical Unit (ESU)

The standard in consistent energy delivery, the System 5000 unites proprietary dynamic response technology with an array of specialty modes for desired clinical effect.

System 5000 ESU

System 5000 ESU, 120V	60-8005-001
System 5000 ESU, 100V - 240V (Symbols Front Panel)	60-8005-002
System 5000 ESU, 100V - 240V	60-8005-003

Includes a System 5000 – 120V ESU, Mobile Pedestal, Upper Storage Basket, Lower Storage Basket, Monopolar Footswitch, Bipolar Footswitch (English Front Panel)60-8005-SYS

Includes a System 5000 – 100V to 240V ESU, Mobile Pedestal, Upper Storage Basket, Lower Storage Basket, Monopolar Footswitch, Bipolar Footswitch (Symbols Front Panel)60-8015-SYS

Includes a System 5000 – 100V to 240V ESU, Mobile Pedestal, Upper Storage Basket, Lower Storage Basket, Monopolar Footswitch, Bipolar Footswitch (English Front Panel)60-8018-SYS

Includes a 120V System 5000 ESU, Mobile Pedestal, Upper Storage Basket, Lower Storage Basket, Saddlebag Lower Basket, Monopolar Footswitch, Bipolar Footswitch, AER DEFENSE® Smoke Evacuator and Vacuum Control Assembly (English Front Panel) 60-8005-SYS-VAC

Mobile Pedestal

Mobile Pedestal including Upper and Lower Storage Baskets60-8040-001

Footswitches

Monopolar Footswitch with 15 ft. cable	60-6700-001
Bipolar Footswitch	60-5103-001

Basket

Saddlebag Lower Basket	60-8041-001
------------------------------	-------------

Stacking Adapter

Adapter allows two System 5000 ESUs to be mounted on a Mobile Pedestal60-8030-001

Manuals / CD

Operator's Manual, System 5000 ESU	60-8016-ENG
In-Service CD, System 5000 ESU	60-8026-001
In-Service DVD, System 5000 ESU	60-8026-DVD
Service Manual, System 5000 ESU	60-8017-ENG

System 2450™ Electrosurgical Unit (ESU)

The System 2450 provides state-of-the-art innovation in an easy-to-use format. Simple on the outside, yet sophisticated and powerful on the inside.

System 2450 ESU

System 2450 ESU, 100V	60-2450-100
System 2450 ESU, 120V	60-2450-120
System 2450 ESU, 220V	60-2450-220
System 2450 ESU, 230-240V	60-2450-230
System 2450 Cart	60-7152-001

Footswitches

Monopolar Footswitch with 15 ft. cable	60-6700-001
Bipolar Footswitch	60-5103-001

Stacking Adapter

Stacking Adapter for System 2450	60-6963-001
--	-------------

Manuals / CD

Operator's Manual, System 2450 ESU	60-2451-ENG
In-Service CD, System 2450 ESU	60-2453-001
Service Manual, System 2450 ESU	60-2454-ENG

Universal ESU Cart

Assembled Cart	60-5480-001
----------------------	-------------



60-5480-001



GoldLine® Electrosurgical Pencils

CONMED's wide variety of pencils appeal to a wide variety of surgeon preferences. Electrosurgical pencils are available in Push Button, Rocker Switch, and Foot-Control configurations, as well as with stainless steel and UltraClean electrode options.

Push Button, Hand Switch Pencils

UltraClean® Blade, Holster, 10' Cable, 40/case	131309A
UltraClean® Blade, Holster, 15' Cable, 40/case	131326A
Standard Blade, Holster, 10' Cable, 40/case	130309A
Standard Blade, Holster, 15' Cable, 40/case	130326A
Standard Blade, Holster, Tip Cleaner, 10' Cable, 40/case	130303A
Needle Electrode, Holster, 10' Cable, 40/case.....	130302A
Extended Insulated Blade, Holster, 10' Cable, 40/case.....	138114A

Rocker Switch, Hand Switch Pencils

UltraClean® Blade, Holster, 10' Cable, 40/case	131307A
UltraClean® Blade, Holster, 15' Cable, 40/case	131327A
Standard Blade, Holster, 10' Cable, 40/case	130307A
Standard Blade, Holster, 15' Cable, 40/case	130327A
Standard Blade, Holster, Tip Cleaner, 10' Cable, 40/case	130304A
Needle Electrode, Holster, 10' Cable, 40/case.....	130301A
Ext. Blade 10' (3.05m) Cable, Holster 40/case 1/pkg	138115A

Foot Control Pencils

UltraClean® Blade, Holster, 10' Cable, 40/case	138650A
Needle Electrode, Holster, 10' Cable, 40/case.....	138652A
Blade Electrode, Holster, 10' Cable, 40/case.....	138659A

Tip Cleaner

Tip Cleaner, Single Use, Sterile, 40/case	138029
---	--------

MicroNeedles

Compatible an electrosurgical pencils that can accommodate an electrode with a 3/32 inch (2.4mm) or 5/32 inch (4mm) shaft.

3cm, 0° MicroNeedle, 10/case	138505-10
4cm, 0° MicroNeedle, 10/case	138506-10

Reusable Hand Control Pencils

GoldLine® Push Button, 1" Blade Disposable, 50 use, 10' (3.05m) Cable 10/case 1/pkg	130317
GoldLine® Push Button, 1" Blade Disposable, 50 use, 15' (4.57m) Cable 10/case 1/pkg	130317-15
GoldLine® Rocker Switch, 1" Blade Disposable, 50 use, 10' (3.05m) Cable 10/case 1/pkg	130316
GoldLine® Rocker Switch, 1" Blade Disposable, 50 use, 15' (4.57m) Cable 10/case 1/pkg	130316-15
PowerPoint®, 1" Blade Reusable, 50 use, 15' (4.57m) Cable 10/case 1/pkg	130384

Reusable Foot Control Pencils

Sold without electrode, 50 use, 10' (3.05m) Cable 1 each.....	60-0815-001
--	-------------

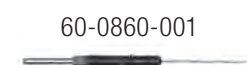
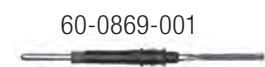
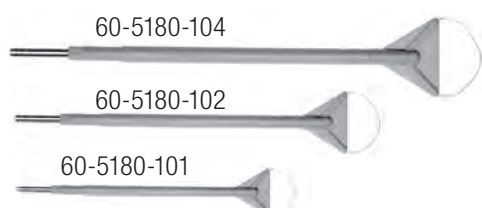
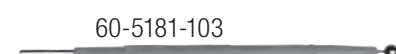
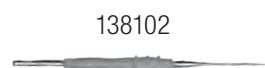
Pencil Accessories

Reusable Safety Holster 10/case 1/pkg	60-0235-001
Disposable Safety Holster 40/case 1/pkg	137668

ValueBlue™ Electrosurgical Pencils

Push-Button Pencil, 1" Stainless Steel Blade, Sterile 10/case 1/pkg	130402
Push-Button Pencil, 1" ValueBlue Coated Electrode, Sterile 10/case 1/pkg	130403
Rocker-Switch Pencil, 1" Stainless Steel, Sterile 10/case 1/pkg	130404
Rocker-Switch Pencil, 1" ValueBlue Coated Electrode, Sterile 10/case 1/pkg	130405





Disposable Stainless Steel Needles

Needle Electrode with Hex Hub 40/case 1/pkg	138102
Needle Electrode with Extended Insulation; Hex Hub 40/case 1/pkg	138105
6" Needle Electrode with Hex Hub 40/case 1/pkg	138108
6" ENT Needle Electrode with Extended Insulation 40/case 1/pkg	138025

Disposable Stainless Steel Balls

Ball, 3/16" diameter, with Hex Hub 40/case 1/pkg	138103
Ball, 3mm diameter, 10cm shaft 5/case 1/pkg	60-5181-102
Ball, 5mm diameter, 10cm shaft 5/case 1/pkg	60-5181-103

Disposable Loops

Loop Excision Electrode, "T" Style, 12x8mm 5/case 1/pkg	60-5180-101
Loop Excision Electrode, "T" Style, 15x10mm 5/case 1/pkg	60-5180-102
Loop Excision Electrode, "T" Style, 20x10mm 5/case 1/pkg	60-5180-104

Reusable Blades

Straight Blade Electrode, 1" (2.54cm) length; Hex Hub 6/case 1/pkg	60-0869-001
Blade Electrode, 7/8" (2.22cm), 2.9" (7.37cm) overall length; Hex Hub 10/case 1/pkg	138000

Reusable Needles

Needle Electrode, Fine; Hex Hub 6/case 1/pkg	60-0860-001
---	-------------

Reusable Loops and Conization

Round Loop Electrode, 3/8" (0.95cm) diameter 6/case 1/pkg	60-0867-001
Round Loop Electrode for cutting and biopsies, 3/8" (0.95cm) diameter, 2" (5.08cm) overall length 5/case 1/pkg	138010
Round Loop Electrode for cutting and biopsies, 1/4" (0.64cm) diameter, 1 3/4" (4.45cm) overall length 5/case 1/pkg	138011
Round Loop Electrode for cutting, 3/4" (1.91cm) diameter, 2.1" (5.53cm) overall length 5/case 1/pkg	138012
Medium 1/4" (0.64cm) conization; 1 each	138008

Reusable Extender

Straight Electrode Extender ,5" (12.7cm)
5/case 1/pkg 138026

Disposable UltraClean® Blades

1" UltraClean® Blade
50/case 1/pkg 139100

1" UltraClean® Blade with Extended Insulation
50/case 1/pkg 139104EXT

4" UltraClean® Blade
50/case 1/pkg 139112

4" UltraClean® Blade with Extended Insulation
50/case 1/pkg 139112EXT

6" UltraClean® Blade
50/case 1/pkg 139107

6" UltraClean® Blade with Extended Insulation
50/case 1/pkg 139110EXT

1" UltraClean® Blade for ABC® Triple Option Handpiece
10/case 1/pkg 139321

Disposable Stainless Steel Blades

Heavy Flat Blade Electrode with Hex Hub
40/case 1/pkg 138100

Standard Flat Blade Electrode with Hex Hub
40/case 1/pkg 138101

Flat Blade Electrode with Extended Insulation; Hex Hub
40/case 1/pkg 138104

6" Flat Blade Electrode with Hex Hub
40/case 1/pkg 138107

6" Flat Blade Electrode with Extended Insulation; Hex Hub
40/case 1/pkg 138110

4" Flat Blade Electrode with Hex Hub
40/case 1/pkg 138112

3 1/2" Flat Blade Electrode with Hex Hub
40/case 1/pkg 138113

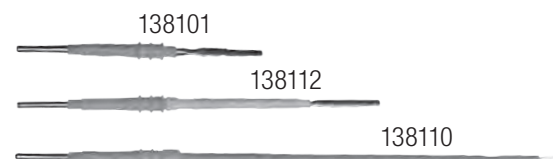
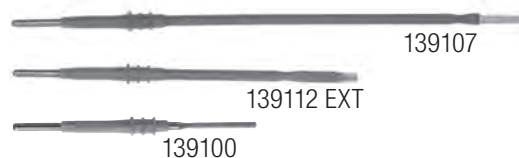
Disposable UltraClean® Needles

1" UltraClean® Needle
50/case 1/pkg 139102

1" UltraClean® Needle with Extended Insulation
50/case 1/pkg 139105EXT

6" UltraClean® Needle
50/case 1/pkg 139108

6" UltraClean® Needle with Extended Insulation
50/case 1/pkg 139025EXT





60-0136-001



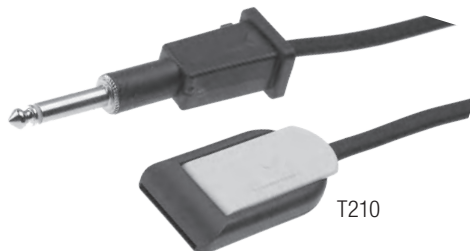
60-0137-001



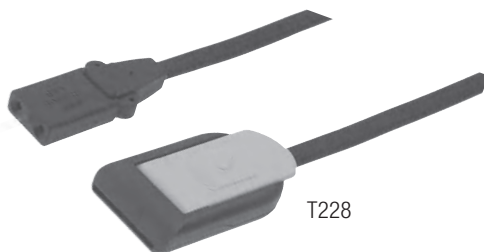
60-5806-001



60-0641-001



T210



T228



T235

Reusable Dispersive Electrodes

Adult Reusable Patient Plate; Stainless Steel, 63 sq. in. (406.48 sq. cm)
1 each60-0136-001

Pediatric Reusable Patient Plate; Stainless Steel, 35 sq. in. (225.82 sq. cm)
1 each60-0136-002

Reusable Cables (for use with reusable dispersive electrodes)

2-wire cable for 60-0136-001 and 60-0136-002 patient plates above.
For use with Aspen, Neomed, BARD EMS 771, 737 and 737XL and Ritter
Electrosurgical Units; 10' (3.05m) Cable
1 each60-0137-001

2-wire cable for 60-0136-001 and 60-0136-002 patient plates above.
For use with CONMED Sabre® 180, Sabre® 2400, Excalibur, Excalibur
Plus, Excalibur Plus PC®, System 2450™ and System 5000™
Electrosurgical Units; 10' (3.05m) Cable
1 each60-5806-001

Conductive Gel (for use with reusable dispersive electrodes)

ASPENGEL Conductive Gel, Nonstaining; 8.45 fluid ounce
12/case 1/pkg60-0641-001

Cables for Dispersive Electrodes

Cable for use with Erbe and Elmed generators; 10' (3.05m)
1 each T210

Cable for use with all ARM-equipped and Valleylab REM-equipped
generators. Enables pad-to-patient contact quality monitoring;
10' (3.05m)
1 each T229

Cable for use with all ARM-equipped and Valleylab REM-equipped
generators. Enables pad-to-patient contact quality monitoring;
15' (4.57m)
1 each T229-5M

Cable for use with single dispersive electrodes and non-contact quality
monitoring generators; 10' (3.05m)
1 each T228

Cable for use with CONMED System 6500 and System 7500® ABC®
10' (3.05m)
1 each T235

Cable for use with all ARM-equipped and Valleylab REM-equipped
generators. Use with the System 6400. Enables pad-to-patient contact
quality monitoring; 10' (3.05m)
1 each T238

Dispersive Electrode Adapters and Cables

Dispersive Electrode Adapter. For use with Valleylab generators without REM (single-foil only); Wallach Leep 100

1 each..... B204

Dispersive Electrode Adapter. For use with all Aspen Labs; Birtcher 3000, 4400; Davol/Bard/Birtcher 5000 without PSS; Bicap 60, 200

1 each..... B205

Dispersive Electrode Adapter. For use with Erbe and Elmed generators

1 each..... B210

Dispersive Electrode Adapter. Allows CONMED ABC generators to use Valleylab dual-foil dispersive electrodes

1 each..... A238

Dispersive Electrode Adapter. For use with Ritter Bovie Specialist

1 each..... B227

Dispersive Electrode Adapter. For use with Olympus S-P cables retrofit with CONMED Adapter and CONMED Single Foil Dispersive electrodes

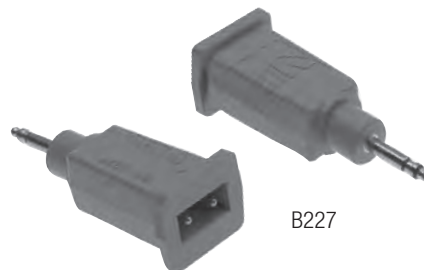
1 each..... B260

Dispersive Electrode Adapter. For use with Olympus Adapter for use with Olympus S-P cables retrofit with Aspen BIOPLUS Adapter and CONMED Single Foil Dispersive Electrodes

1 each..... B261



A238



B227



B260



B261



60-1765-001



136011



60-1772-001

Suction Coagulators

CONMED's Suction Coagulators provide a means of aspirating blood and small tissue particulate in addition to controlling bleeding during open surgical procedures.

Suction Coagulator, Foot Control, 10 French, 6" (15cm), Monopolar, Single Use; Sterile 10' (3.0m) Cordset, 25/case..... 130187

Suction Coagulator, Hand Control, 10 French, 6" (15cm), Monopolar, Single Use; Sterile 10' (3.0m) Cordset, 25/case..... 130188

Electrosurgical Forceps and Accessory Cables

CONMED's bipolar and monopolar forceps are available in a multitude of lengths, tip sizes, and designs including Bayonet, Jewelers, Adson and Straight. Bipolar and monopolar options. Foot control and hand control activation.

Foot Control Bipolar Forceps: Bayonet Reusable; Non-Sterile

Scoville-Greenwood Bayonet, 7¾" (19.7cm) Length, 1.5mm Tip, Insulated.....60-1765-001

Cushing Bayonet, Micro Tip, 7½" (19.1cm) Length, 0.7mm Tip, Insulated.....60-1769-001

Hardy Bayonet, Micro Tip with Stops, 8¼" (21.0cm) Length, 0.5mm Tip, Non-Insulated60-1770-001

Bayonet, Straight 20cm Length, 2.0mm Tip, Insulated.....60-7400-001

Bayonet, Straight, 20cm Length, 1.0mm Tip, Insulated..... 60-7401-001

Bayonet, Straight, 22cm Length, 0.5mm Tip, Insulated.....60-7402-001

Foot Control Bipolar Forceps — Jewelers Reusable; Non-Sterile

Jewelers Micro Tip, Curved, 4" (10.2cm) Length, 0.4mm Tip, Insulated.....60-1766-001

Jewelers Micro Tip, Straight, 4" (10.2cm) Length, 0.4mm Tip, Insulated..... 60-1767-001

Jewelers Micro Tip, Curved, 4" (10.2cm), 0.4mm Tip, Non-Insulated 136011

Jewelers, Straight, 11cm Length, 0.5mm Tip, Insulated.....60-7403-001

Foot Control Bipolar Forceps — Semkin Reusable; Non-Sterile

Semkin, Micro Tip with Stops, 5½" (14.0cm) Length, 0.7mm Tip, Non-Insulated60-1771-001

Semkin, Straight, 6" (15.2cm) Length, 1.5mm Tip, Insulated.....60-1772-001

Foot Control Bipolar Forceps — Adson Reusable; Non-Sterile

Adson, Straight, 5" (12.7cm) Length, 1.0mm Tip, Insulated60-1768-001

Adson, Straight, 13cm Length, 1.0mm Tip, Insulated.....60-7404-001

Foot Control Bipolar Forceps — Iris Reusable; Non-Sterile

Iris, Straight, 3½" (8.9cm) Length,
0.4mm Tip, Insulated.....60-1773-001

Iris, Curved, 3½" (8.9cm) Length,
0.5mm Tip, Insulated.....60-1774-001

Foot Control Bipolar Forceps — Omni Reusable; Non-Sterile

Omni, Straight with Stops, Diamond Pattern, Round Handle,
6" (15.2cm) Length, 0.7mm Tip, Non-Insulated..... 136000

Foot Control Bipolar Forceps — Straight Reusable; Non-Sterile

Cushing, Straight, 7" (17.8cm) Length,
1.5mm Tip, Not Insulated 136016

Straight, 14cm Length,
2.0mm Tip, Insulated.....60-7405-001

Hand Control Bipolar Forceps — Reusable; Non-Sterile

Cushing Bayonet, 7½" (19.1cm) Length,
0.7mm Tip, Insulated.....60-5120-001

Scoville-Greenwood Bayonet, 7¾" (19.7cm) Length,
1.5mm Tip, Insulated.....60-5121-001

Jewelers, Straight Tip 4" (10.2cm) Length,
0.4mm Tip, Insulated.....60-5122-001

Semkin, Micro Tip, 5½" (14.0cm) Length,
0.7mm Tip, Insulated.....60-5123-001

Foot Control Monopolar Forceps — Reusable; Non-Sterile

Bayonet, Straight Tip with Cable, 7" (17.8cm) Length,
2.0mm Tip, Insulated.....60-0817-001

Potts-Smith, Straight Tip with Cable, 7" (17.8cm) Length,
2.0mm Tip, Insulated.....60-0821-001

Hand Control Monopolar Forceps — Reusable; Non-Sterile

Bayonet, Straight Tip with Cable, 5¼" (13.3cm) Length,
2.0mm Tip, Insulated.....60-0810-001

Bayonet, Straight Tip with Cable, 7½" (19.1cm),
2.0mm Tip, Insulated.....60-0812-001



60-1774-001



136016



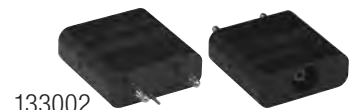
60-0823-001



60-6790-001



133001



133002

Active Instrument Adapter – Monopolar

- Adapter for foot control monopolar accessories;
fits Bovie #12 type output sockets
1 each..... 60-0823-001
- Universal Adapter for foot control monopolar accessories;
fits Bovie #12 type output sockets
1 each..... 60-6790-001

Active Instrument Adapter – Bipolar

- Coaxial Bipolar Adapter, for use with CONMED Excalibur Plus PC®,
Sabre® 2400, Sabre® 180, System 7500® and 7550™
1 each..... 133001
- Coaxial Bipolar Adapter, for use with CONMED System 2450™,
System 5000™, and Valleylab electrosurgical units
1 each..... 133002

Disposable Cords

.09375" Disposable Monopolar Cord (Gray) 60-5168-001
 .09375" (2.4mm) receptacle, 10' (3.05m) length
 Single-use, Sterile, 1/pkg, 50/cs
 For use with laparoscopy electrodes
 series 60-5158-XXX thru 60-5165-XXX.

4mm Disposable Monopolar Cord (Blue) 60-5168-005
 4mm (.15625") receptacle, 10' (3.05m) length
 Single-use, Sterile, 1/pkg, 50/cs
 Fits most standard 4mm monopolar connector posts.
 Fits all CONMED disposable scissors, graspers, dissectors,
 DetachaTip®, Sensatec® and 4mm post laparoscopic electrodes.

Disposable Bipolar Cord, 10' (3.05m) length 60-5102-002
 Single-use, Sterile, 1/pkg, 10/cs

Disposable Bipolar Cord, 12' (3.66m) length 135166
 Single-use, Sterile, 1/pkg, 40/cs

Reusable Cables

4mm Reusable Monopolar Cable..... 60-5169-001
 4mm (.15625") pin receptacle, 10' (3.05m) length
 Reusable, Non-sterile, 1 each

Fits most standard 4mm monopolar connector posts.
 Fits all CONMED disposable scissors, graspers, dissectors,
 DetachaTip®, Sensatec® and 4mm post style laparoscopic electrodes.

Footswitch Adapter

Standard adapter for foot-activated monopolar accessories.... 60-0823-001
 1 each
 Fits Bovie #12 type output sockets.



60-5168-001



60-5168-005



60-5102-002



135166



60-5169-001



60-0823-001



Spatula



"L" Hook



Straight Blade



"J" Hook



Hook Blade

Disposable Laparoscopic Electrodes

Spatula, 5mm x 32cm working length, 1/pkg, 5/cs60-5159-001

Spatula, 5mm x 27cm working length, 1/pkg, 5/cs 60-5159-002

Spatula, 5mm x 32cm working length with 4mm pin, 1/pkg, 5/cs..... 60-5159-004

Packaged with the CONMED® 60-5168-005
single-use 4mm footswitching cable.

"L" Hook, 5mm x 32cm working length, 1/pkg, 5/cs 60-5163-001

"L" Hook, 5mm x 27cm working length, 1/pkg, 5/cs 60-5163-002

"L" Hook, 5mm x 32cm working length
with 4mm pin, 1/pkg, 5/cs..... 60-5163-004

Packaged with CONMED® 60-5168-005
single-use 4mm footswitching cable.

Straight Blade, 5mm x 32cm working length, 1/pkg, 5/cs... 60-5160-001

Straight Blade, 5mm x 27cm working length, 1/pkg, 5/cs... 60-5160-002

Packaged with the CONMED® 60-5168-005
single-use 4mm footswitching cable.

"J" Hook, 5mm x 32cm working length, 1/pkg, 5/cs..... 60-5164-001

"J" Hook, 5mm x 27cm working length, 1/pkg, 5/cs..... 60-5164-002

"J" Hook 5mm x 32cm working length
with 4mm pin, 1/pkg, 5/cs..... 60-5164-004

Packaged with the CONMED® 60-5168-005
single-use 4mm footswitching cable.

Hook Blade, 5mm x 32cm working length, 1/pkg, 5/cs..... 60-5162-001

Accessory Cables

Disposable Footswitching Bipolar Cable, 10' (3.05m)

Fixed plug for use with most standard generators60-6102-002

Reusable, Footswitching, Bipolar Forceps Cable, use with most
standardized generators, 12' (3.66m).....60-8046-001

Disposable Monopolar TUR/Endoscopic Cable for ACMI,
10' (3.05m).....60-2121-001

Reusable, Handswitching, Bipolar Cable, use with Bistat™ and System
7550, 12' (3.66m)60-5130-001

Reusable, Handswitching, Bipolar Cable, use with System 2450 and
System 5000, 12' (3.66m)60-5132-001

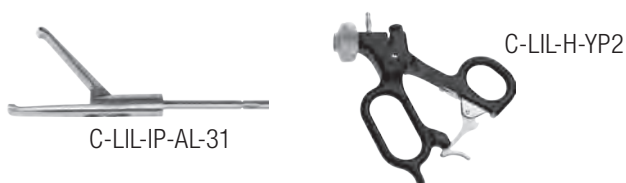
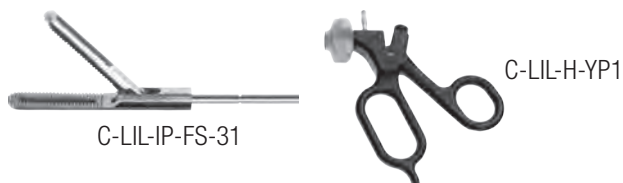
Reusable, Footswitching, Monopolar Forceps Cable with threaded male
connector, 10' (3.05m).....60-0824-001

Reusable Footswitching Bipolar Forceps Cable, 10' (3.05m) use with Wolf
Kleppinger forceps Twin banana plug machine connectors..... QI-2301

Reusable Monopolar TUR Cable
with Standard (Bovie #12) Plug60-0816-001

INSTRUMENTS





MicroLap® Instruments

Designed to improve patient outcomes with a less invasive approach, this complete line of instruments delivers the strength of 5mm instruments through ports 4x smaller than standard trocars^{1,2}.

MicroLap Curved Scissors

Sterile Jaw Insert	C-LIL-IP-2SC-31ST
Insulated Outer Tube	C-LIL-TU-31
Red Handle.....	C-LIL-H-RP1

MicroLap Maryland Dissector

Jaw Insert	C-LIL-IP-2DM-31
Insulated Outer Tube	C-LIL-TU-31
Blue Handle	C-LIL-H-BP1

MicroLap Tapered Forceps

Jaw Insert	C-LIL-IP-2DM-31
Insulated Outer Tube	C-LIL-TU-31
Blue Handle	C-LIL-IP-ST-31

MicroLap Fenestrated Grasping Forceps

Jaw Insert	C-LIL-IP-FS-31
Insulated Outer Tube	C-LIL-TU-31
Yellow Handle	C-LIL-H-YP1
Yellow Handle with Ratchet.....	C-LIL-H-YP2

MicroLap Clutch Grasping Forceps

Jaw Insert	C-LIL-IP-CL-31
Insulated Outer Tube	C-LIL-TU-31
Yellow Handle	C-LIL-H-YP1
Yellow Handle with Ratchet.....	C-LIL-H-YP2

MicroLap Allis Grasping Forceps

Jaw Insert	C-LIL-IP-AL-31
Insulated Outer Tube	C-LIL-TU-31
Yellow Handle	C-LIL-H-YP1
Yellow Handle with Ratchet.....	C-LIL-H-YP2

¹Data on File, SurgiQuest 2015 REF 0408150930_01.

Wound area comparison between standard market leading 5mm trocar and Low Impact Trocar.

²Data on File, SurgiQuest 2015 REF 0316151400_00. Bend moment comparison test.

MicroLap Specialty Instruments

Aspiration Cannula, 330mm.....	C-LIL-PC-33
Aspiration Needle, 330mm	C-LIL-PN-33
Rounded Stylus, 330mm	C-LIL-RS-33

MicroLap Laparoscopes

0° Degree	C-LIL-33-0
30° Degree	C-LIL-33-30

MicroLap Trocars

Cannula

60mm	C-LIL-C-060
75mm	C-LIL-C-075
100mm	C-LIL-C-100
120mm	C-LIL-C-120

Helical Obturator

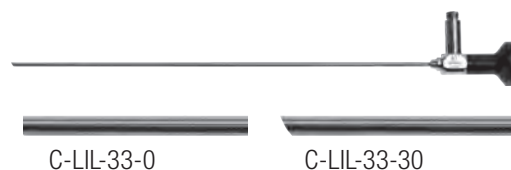
60mm	C-LIL-O-060H
75mm	C-LIL-O-075H
100mm	C-LIL-O-100H
120mm	C-LIL-O-120H

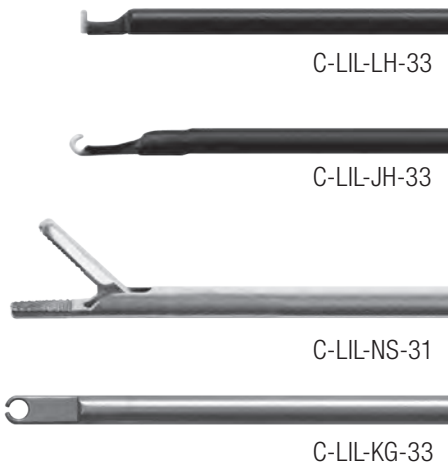
Seal

Single Use, sterile pack, 25/box	C-LIL-SEAL-1
--	--------------

Stop Cock Trocars

Low Impact Cannula 3.5mmX100mm w/ stick.....	C-COEC35100RO
Low Impact Obturator HEL 3.5mm x 100mm	C-COEP35100H





MicroLap Cautery

Bipolar Forceps

Bipolar Forceps Insert.....	C-LIL-IB-FS-35
Over Tube.....	C-LIL-BTU-35
Bipolar Forceps Handle.....	C-LIL-H-BP
Bipolar Cable.....	85530101

Monopolar Forceps

Monopolar "L" Hook, 330mm.....	C-LIL-LH-33
Monopolar "J" Hook, 330mm.....	C-LIL-JH-33
Monopolar Coagulation Tip, 330mm.....	C-LIL-CT-33
Monopolar Cable.....	60-5169-001

Laparoscopic Suturing Instruments

Straight Needle Driver	C-LIL-NS-31
Knot Pusher, 330mm	C-LIL-KG-33

Sterilization System for MicroLap Instruments

Sterilization Container and Tray	SQ001
--	-------

Sterilization System for MicroLap Laparoscopes

Sterilization Container and Tray	SQ002
--	-------

DetachaTip® III Laparoscopic Instruments

Complimentary balance in a reusable handheld instrument system. Combines precise, reliable, and comfortable performance with dramatically reduced procedural costs. Only DetachaTip III offers the optimal blend of performance and cost efficiency.

DetachaTip III Scissors

Curved Metzenbaum, 33cm x 5mm.....	3-1003
Curved Metzenbaum, 43cm x 5mm.....	3-4301
Curved Mini-Metzenbaum, 33cm x 5mm.....	3-1004
Curved Mini-Metzenbaum, 43cm x 5mm.....	3-4304

DetachaTip III Graspers

Straight Fenestrated Grasper, 33cm x 5mm.....	3-1008
Straight Fenestrated Grasper, 43cm x 5mm.....	3-4307
Endoweave™ Grasper, 33cm x 5mm.....	3-1028
Endoweave™ Grasper, 43cm x 5mm.....	3-4328
Allis Grasper, 33cm x 5mm.....	3-1019
Allis Grasper, 43cm x 5mm.....	3-4319
5mm Babcock Grasper, 33cm x 5mm.....	3-1005
5mm Babcock Grasper, 43cm x 5mm.....	3-4305
Long Fenestrated Grasper, 33cm x 5mm.....	3-1006
Long Fenestrated Grasper, 43cm x 5mm.....	3-4306
Claw Grasper, 33cm x 5mm.....	3-1011
Claw Grasper, 43cm x 5mm.....	3-4311

DetachaTip III Dissectors

Maryland (Curved) Dissector, 33cm x 5mm.....	3-1009
Maryland (Curved) Dissector, 43cm x 5mm.....	3-4308
Meeker (Right Angle) Dissector, 33cm x 5mm.....	3-1017
Meeker (Right Angle) Dissector, 43cm x 5mm.....	3-4317
Tapered (Dolphin) Dissector, 33cm x 5mm.....	3-1018
Tapered (Dolphin) Dissector, 43cm x 5mm.....	3-4318
Blunt Nose Dissector, 33cm x 5mm.....	3-1012
Blunt Nose Dissector, 43cm x 5mm.....	3-4312





Curved (Maryland)



Tapered (Dolphin)



Meeker



Luer Lock Port Cap
Universal Standard Handle



Fenestrated
(Duckbill)



Allis



Endoweave™



Babcock (10mm)
Babcock (5mm)

DetachaTip® III Multi-Use Dissectors

Curved (Maryland), 5mm x 33cm length, Sterile, 1/box	3-1009
Curved (Maryland), 5mm x 43cm length, Sterile, 1/box	3-4308
Tapered, 5mm x 33cm length, Sterile, 1/box	3-1018
Tapered, 5mm x 43cm length, Sterile, 1/box	3-4318
Meeker (Right Angle), 5mm x 33cm length, Sterile, 1/box	3-1017
Meeker (Right Angle), 5mm x 43cm length, Sterile, 1/box	3-4317

DetachaTip® III Multi-Use Handles

Universal Standard Handle with ratchet, Non-Sterile, 1/box	3-1010
DetachaTip® Luer Port Cap	CD203

Multi-Use Instrument Trays

DetachaTip® Tray	3-4329
For 33cm and 43cm DetachaTip® instruments Only, Non-sterile, 1 each	
DetachaTip® PLUS Tray	3-4343
Accommodates 43cm and 33cm instruments and accessories.	
Non-sterile, 1 each	

DetachaTip® II Multi-Use Scissors

Curved Metzenbaum, 5mm x 33cm length, Sterile, 1/box	2-1003
Curved Metzenbaum, 5mm x 43cm length, Sterile, 1/box	2-4301
Curved Mini-Metzenbaum, 5mm x 33cm length, Sterile, 1/box ...	2-1004
Curved Mini-Metzenbaum, 5mm x 43cm length, Sterile, 1/box ...	2-4304

DetachaTip® II Multi-Use Graspers

Fenestrated (Duckbill), 5mm x 33cm length, Sterile, 1/box	2-1008
Fenestrated (Duckbill), 5mm x 43cm length, Sterile, 1/box	2-4307
Allis, 5mm x 33cm length, Sterile, 1/box	2-1019
Allis, 5mm x 43cm length, Sterile, 1/box	2-4319
Endoweave™, 5mm x 33cm length, Sterile, 1/box	2-1028
Endoweave™, 5mm x 43cm length, Sterile, 1/box	2-4328
Babcock, 5mm x 33cm length, Sterile, 1/box	2-1005
Babcock, 5mm x 43cm length, Sterile, 1/box	2-4305
Babcock, 10mm x 33cm length, Sterile, 1/box	2-1014

DetachaTip® II Multi-Use Dissectors

Curved (Maryland), 5mm x 33cm length, Sterile, 1/box	2-1009
Curved (Maryland), 5mm x 43cm length, Sterile, 1/box	2-4308
Tapered, 5mm x 33cm length, Sterile, 1/box	2-1018
Tapered, 5mm x 43cm length, Sterile, 1/box	2-4318
Meeker (Right Angle), 5mm x 33cm length, Sterile, 1/box	2-1017
Meeker (Right Angle), 5mm x 43cm length, Sterile, 1/box	2-4317

DetachaTip® II Multi-Use Handles

Standard Handle with ratchet, Non-Sterile, 1/box	1-1010
DetachaTip® Luer Port Cap	CD203

Multi-Use Instrument Tray

Three-part Sterilization Tray for DetachaTip® instruments.....	1-1027
Non-sterile, 1 each, for 33cm DetachaTip® instruments	



Curved (Maryland)



Tapered (Dolphin)



Meeker



Standard



Luer Lock Port Cap





Curved Metzenbaum



Curved Metzenbaum
Narrow Tip



Mini Curved Metzenbaum



Straight



Mini Straight



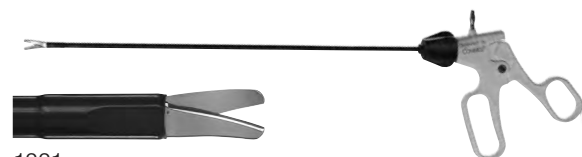
Hook Blade



1411



1412



1221



1222

CONMED Disposable Laparoscopic Scissors

- Wide opening scissors for improved dissection
- Extended insulation for maximum protection
- All instruments are packaged sterile
- Monopolar
- Disposable electrosurgical cord included
- Red rotation knob to indicate Scissor family
- 5 year shelf life

CONMED Curved Metzenbaum 60-6035-001
5mm x 32cm length with universal cord, 1/pkg, 5/cs

CONMED Curved Metzenbaum, Narrow Tip 60-6035-001W
5mm x 32cm length with universal cord, 1/pkg, 5/cs

CONMED Curved Metzenbaum 60-6035-431
5mm x 43cm length with universal cord, 1/pkg, 5/cs

CONMED Mini Curved Metzenbaum 60-6035-003
5mm x 32cm length with universal cord, 1/pkg, 5/cs

CONMED Mini Curved Metzenbaum 60-6035-433
5mm x 43cm length with universal cord, 1/pkg, 5/cs

CONMED Straight 60-6035-002
5mm x 32cm length with universal cord, 1/pkg, 5/cs

CONMED Mini Straight 60-6035-005
5mm x 32cm length with universal cord, 1/pkg, 5/cs

CONMED Hook Blade 60-6035-004
5mm x 32cm length with universal cord, 1/pkg, 5/cs

Reflex® Laparoscopic Disposable Scissors

Reflex Short Curved Scissors 1411
5mm x 32cm length, (cord not included), 1/pkg, 6/cs

Reflex Long Curved Scissors 1412
5mm x 32cm length, (cord not included), 1/pkg, 6/cs

CONMED Disposable Scissors

Short Curved Mini Metz..... 1221
5mm x 33cm length, (cord not included), 1/pkg, 10/cs

Long Curved Metz Scissors..... 1222
5mm x 33cm length, (cord not included), 1/pkg, 10/cs

VCare® Plus

VCare Plus helps surgeons deliver superior control of the anatomy, effective uterine manipulation and identification of key surgical landmarks for a safe, efficient and repeatable procedure.

VCare Plus, Small (32mm)	
Cervical Cup, 8/cs	60-6085-200A
VCare Plus, Medium (34mm)	
Cervical Cup, 8/cs	60-6085-201A
VCare Plus, Large (37mm)	
Cervical Cup, 8/cs	60-6085-202A
VCare Plus, X-Large (40mm)	
Cervical Cup, 8/cs	60-6085-203A

VCare® DX Plus

Provides excellent control of the uterus without distention of vaginal fornices. Ideal for:

- Tubal Ligation
- Myomectomies
- Diagnostic Laparoscopy
- Treatment of Endometriosis

VCare DX Plus Manipulator, 8/cs	60-6080-000A
---------------------------------------	--------------





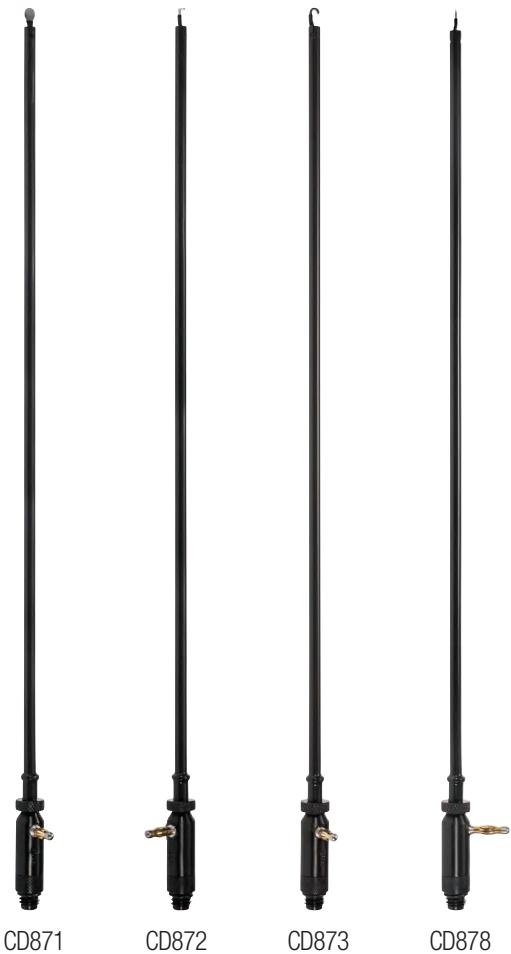
Core™ Suction / Irrigation

Suction Probes (Reusable)

- 10mm x 32cm with Holes..... CD856
- 10mm x 32cm Poole..... CD861
- 10mm x 20cm Stone Extractor with Sheath..... CD862
- 5mm x 32cm Micro Tip CD846
- 5mm x 32cm with Holes..... CD860
- 5mm x 32cm Poole Suction..... CD859
- 5mm x 45cm with Holes..... CD849
- 3mm x 32cm with Holes (MicroLap®)..... CD845

Optional Electrodes (Reusable with integrated suction probe)

- 5mm x 32cm Spatula..... CD871
- 5mm x 32cm L-Hook CD872
- 5mm x 32cm J-Hook CD873
- 5mm x 32cm Needle..... CD878
- 5mm x 32cm Electrode Probe Sheath CD874



Core™ Suction / Irrigation System

The Core Fluid Management System offers the benefit of a simple, easy to use suction and irrigation system with the convenience of a reusable suction cannula for added savings.

1. Select a Trumpet
2. Select a Suction Probe
3. Select an optional Electrode

Trumpet Styles (Disposable)

Single bag, 10/box	CD8300
Single bag, 5mm, 32cm probe, 10/box	CD8185
Dual bag, 10/box	CD8302
Dual bag, 5mm, 32cm probe, 10/box	CD8190
Handpiece only, 20/box	CD8450
Handpiece with 5mm, 32cm probe, 20/box	CD8400



CD8300



CD8185



CD8302



CD8190



CD8450



CD8400



Pistol Grip



Straight Handle



Universal Plus® System

Electrosurgical and high volume suction/irrigation systems for laparoscopic surgery.

- Cut
- Cauterize
- Dissect
- Laser
- High Volume Suction
- High Volume Irrigation
- Specimen Retrieval
- Smoke Evacuation

Pistol Grip

- Pistol Grip, Foot Control E/S, Hand Control S/I, w/10' HiFlo tubing, irrig. bag spike and universal cord, 10/cs 60-6010-000
- Pistol Grip, Hand Control E/S and S/I, w/10' HiFlo tubing, irrig. bag spike, 10/cs..... 60-6010-002
- Pistol Grip, Foot Control E/S, Hand Control S/I, w/10' HiFlo tubing, "Y" Connector for mechanical pumps and universal cord, 10/cs 60-6010-020
- Pistol Grip, Hand Control E/S and S/I, w/10' HiFlo tubing Irrigation "Y" Connector for mechanical pumps, 10/cs..... 60-6010-022

Straight Handle

- Straight Handle, Foot Control E/S and S/I, w/10' HiFlo tubing, irrig. bag spike and universal cord, 10/cs 60-6010-001
- Straight Handle, Hand Control E/S (Buttons) and S/I, w/10' HiFlo tubing and irrig. bag spike, 10/cs 60-6010-003
- Straight Handle, Hand Control E/S (Rocker switch) and S/I, w/10' HiFlo tubing and irrig. bag spike, 10/cs 60-6010-005

**5mm Electrosurgery Electrodes with Suction/Irrigation
Optional Stealth ER Eschar Resistant Coating**

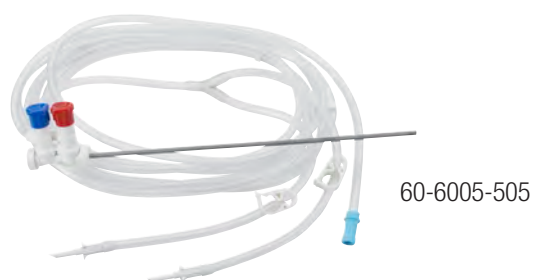
- Spatula
- 27cm 60-5272-027
- 32cm 60-5272-032
- Spatula with non-stick coating
- 27cm 60-5274-027
- 32cm 60-5274-032
- 44cm 60-5274-044
- L-Hook
- 27cm 60-5272-127
- 32cm 60-5272-132
- L-Hook with non-stick coating
- 27cm 60-5274-127
- 32cm 60-5274-132
- 44cm 60-5274-144

FloVac®

FloVac offers outstanding value as a system designed especially for suction and irrigation when electrosurgery is not required. Choose from two styles of control handles - one that accepts our wide range of removable cannula or one with a pre-attached 5mm sump cannula.

For use with Universal Plus®, Universal S/I®, PowerFlo™, and FloVac Control Handles.

FloVac® with Universal Connector.....	60-6005-500
FloVac® with 5mm x 32cm Cannula	60-6005-505



5mm Electrosurgery Electrodes with Suction/Irrigation Optional Stealth ER Eschar Resistant Coating

J-Hook	
27cm	60-5272-227
32cm	60-5272-232
J-Hook with non-stick coating	
27cm	60-5274-227
32cm	60-5274-232
44cm	60-5274-244
Needle	
27cm	60-5272-927
32cm	60-5272-932
Needle with non-stick coating	
32cm.....	60-5274-932
44cm.....	60-5274-944



Interchangeable Reusable Stainless Steel Suction/Irrigation Cannulas

10/10mm Sump Cannula	
with side holes, 32cm.....	60-6002-301
with side holes, 15cm.....	60-6002-307
no side holes, 15cm.....	60-6002-305
5/5mm Sump Cannula	
with side holes, 32cm.....	60-6002-302



Interchangeable Disposable Suction/Irrigation Cannulas – Single Use

10/10mm Sump Cannula	
with side holes 32cm	60-6001-110
no side holes, 15cm.....	60-6001-106
with side holes, 15cm.....	60-6001-107
10/10mm "Soft-Tip" Sump Cannula	
with side holes, 32cm.....	60-6000-130
10/5mm Sump Cannula	
with side holes, 32cm.....	60-6001-108
5/5mm Sump Cannula	
with side holes 32cm	60-6001-203
with side holes, 44cm.....	60-6001-205
5/5mm Laser Access Cannula	
with side holes 32cm	60-6001-360
with side holes, 44cm.....	60-6001-361





1-Liter



Dual 1-Liter



3-Liter



Power Pack

Pressure Infuser Irrigation Pumps

A full line of single 1-liter and 3-liter systems to meet all of your laparoscopic irrigation pressure source needs.

1-Liter Pressure Infuser Irrigation Pump Takes standard irrigation bag, 500 – 1000ml.....	270178
Dual 1-Liter Pressure Infuser Irrigation Pump Takes two bags, 500 – 1000ml, great for irrigators with dual spikes.....	270123
3-Liter Pressure Infuser Irrigation Pump Most versatile, takes single bag, 500 – 3000ml Also can take 2 bags, 500 – 1000ml	270165
Power Pack, Infuser Pump Compressor AC powered air compressor for 270178, 270123, and 270165 Infuser Irrigation Pumps	270179

Gas Source Quick Connect Couplers

Ohmeda	
Oxygen.....	CD984
Air	CD984A
Nitrous Oxide	CD984N
Chemtron	
Oxygen.....	CD983
Air	CD983A
Nitrous Oxide	CD983N
Puritan-Bennett	
Oxygen.....	CD989
Air	CD989A
Nitrous Oxide	CD989N
Schrader (non-swivel)	
Oxygen.....	CD987
Air	CD987A
Nitrous Oxide	CD987N
Schrader (swivel)	
Oxygen.....	CD988
Air	CD988A
Nitrous Oxide	CD988N
Oxequip	
Oxygen.....	CD985
Air	CD985A
Nitrous Oxide	CD985N



Reflex® ELC530 Disposable Laparoscopic Clip Applier

Maximum Visibility

By comparison, the Reflex ELC jaw design has a 20% greater angle allowing for maximum visibility for precise clip placement.

Maximum Control

The Reflex ELC has an automatic, direct drive clip feeding system with an audible feedback mechanism indicating complete clip closure. Our superior design provides maximum control, feel and ease-of-use.

Tissue Lock™ Clip

The Tissue Lock Clip is designed with opposing male/female interlocking features. This design provides superior on-vessel clip retention and improved hemostasis.

10mm, 20 M/L Clips, 6/cs 530

Reflex® One Skin Staplers

- Flexibility of movement
- Fully retracting anvil permits staple release while moving forward or backward unlike competitive models which require you to “back off” before moving forward
- Reflex One releases staple when the handle is fully depressed. Complete staple formation is confirmed by audible and tactile feedback.

35 Wide, 6/box 8535

35 Wide, 50/box 853590

35 Regular, 6/box 8035

Reflex® TL Tissue Lift Skin Stapler

- Additional control
- Reflex TL incorporates a semi-retracting anvil that only releases a staple when the handle is fully released
- Semi-retracting anvil gives the TL its “Tissue Lift” which assists in approximating the incision for easier placement of the next staple

35 Wide, 6/box 8735

35 Wide, 50/box 873590

35 Regular, 6/box 8635

Reflex® Extractor

- Ergonomically designed to help reduce patient discomfort

Wide / Regular, 12/box 3031

Reflex® RHS Re-Loadable Rotating Head Skin Stapler

One (1) each single-use handle and cartridge

- Re-loadable within single patient use

Wide, Sterile, 1/pkg, 6/cs 8935



Anchor Tissue Retrieval System

- Intuitive design provides ease of use
- Opens automatically when deployed
- Rip-stop nylon for exceptional strength and quality



Introducer/Trocar Size	Mouth Diameter	Bag Length	Volume	Qty	Catalog Number
8mm	2.0in (5.1cm)	5.5in (14.0cm)	125ml	5/box	TRS-ROBO-8
10mm	2.2in (5.6cm)	5.5in (14.0cm)	235ml	5/box	TRS100SB2
12mm	3.0in (7.6cm)	5.5in (14.0cm)	300ml	5/box	TRS-ROBO-12
15mm	5.5in (14.1cm)	9.9in (25.4cm)	1550ml	3/box	TRS-VATS-15
15mm	5.5in (14.1cm)	9.9in (25.4cm)	1550ml	3/box	TRS175SB2
15mm	6.0in (15.2cm)	10.4in (26.5cm)	1850ml	3/box	TRS190SB2
25mm	6.5in (16.5cm)	15.0in (38.1cm)	4000ml	3/box	TRS-TV-25

Disposable Laparoscopic Specimen Bags

Sterile, disposable device designed for use as a receptacle for the collection and extraction of tissue, organs, and calculi during laparoscopic surgical procedures. Consists of a flexible memory wire specimen bag and introducer. Use through a 5, 10, or 12mm cannula.

SB534



Description	Cannula	Diameter	Bag Length	Volume	Qty	Catalog Number
Attached Memory Wire Bag, Polymer	5mm	3in (7.62cm)	4in (10.2cm)	120ml	10/case	SB534
Independent Memory Wire Bag, Polymer	10mm	3in (7.62cm)	6in (15.24cm)	255ml	10/case	SB836
Independent Memory Wire Bag, Polymer	10mm	5in (12.7cm)	7in (17.78cm)	680ml	10/case	SB857
Attached Memory Wire Bag, Polymer	10mm	3in (7.62cm)	6in (15.24cm)	255ml	5/case	SB936
Attached Memory Wire Bag, Polymer	10mm	5in (12.7cm)	7in (17.78cm)	680ml	5/case	SB957
Attached Memory Wire Bag, Polymer	12mm	7.5in (19.1cm)	9in (22.9cm)	1500ml	5/case	SB979
Attached Memory Wire Bag, Nylon	10mm	3in (7.62cm)	6in (15.24cm)	255ml	5/case	SB1036
Attached Memory Wire Bag, Nylon	10mm	5in (12.7cm)	7in (17.78cm)	680ml	5/case	SB1057
Attached Memory Wire Bag, Nylon	12mm	7.5in (19.1cm)	9in (22.9cm)	1500ml	5/case	SB1079



Veress Needle

Retracts as the needle is pushed through the abdominal tissue and automatically advances forward once the peritoneum is penetrated. Visual needle position indicator. Clear, comfort handle for easy hang drop test, and a luer lock connector for insufflating the abdominal cavity.

Pneumoperitoneum Insufflation Needle

14 gauge, 12cm with stainless steel tip guard and band indicator

10/case.....60-6050-001

Pneumoperitoneum Insufflation Needle 1

4 gauge, 15cm, with stainless steel tip guard and band indicator

10/case.....60-6050-002

Puncture Closure Device (Trocars Wound Closure)

Allows full closure of peritoneum and fascial layers through the trocar. Exchangeable through trocar cannula for easy port closure while maintaining pneumoperitoneum. J-shaped suture placement needle minimizes risk of organ and tissue injuries. Accommodates both braided and monofilament absorbable sutures, up to size 1.

10mm, single-use, sterile,

Cannula 10-12mm, 10/case.....PCD-10

Kittner Blunt Dissectors

Convenient, cost-effective packaging houses sponge and blunt tip probes. Non-absorbant radiopaque tip. 40cm length.

Single tip Kittner, 5mm x 40cm, single use, sterile

5/case CD801

Dual tip Kittner, 5mm x 40cm, single-use, sterile

5/case..... CD802

Anti-Fog Kit

Water-based solution reduces fogging of scopes. Includes adhesive backed sponge with radiopaque ribbon.

6cc anti-fog solution vial, sponge single-use, sterile

10/case..... CD004

Luer Port Cap

Universal Luer Port Cap, non-sterile

5/case CD203

SMOKE MANAGEMENT



BUFFALO FILTER®





EZLink®
(sold separately; catalog #: EZLINK01)



ViroSafe® Fluid Trap
(sold separately; catalog #: VSFT10)

Direct connect cable as also available -
DCCM01 / DCCOV01



Pneumatic Footswitch
(included)

VisiClear® - Surgical Smoke Evacuator

VisiClear® is our most advanced acute care offering for surgical smoke evacuation. Combining Safeport Technology™, an occlusion warning, filter life tracking, and one-touch programmable procedure modes for open tubing, electrosurgical pencil, and laparoscopic procedures, VisiClear effectively captures and filters surgical smoke, particulates and other potentially hazardous by-products. The filter contains activated carbon known to adsorb gases.

100/120 Volt Systems.....	VC120
220/240 Volt Systems.....	VC220
(includes one filter and one footswitch)	
100/120 Volt Systems.....	VC120NF
220/240 Volt Systems.....	VC220NF
(includes one filter and one footswitch)	
ViroSafe® VisiClear® Filter.....	VS135 Series
Filter Life	18, 21, 35 hours (depending on the mode)

ViroVac® - Surgical Smoke Evacuator

ViroVac® surgical smoke evacuator provides ideal flow for physician offices and outpatient surgery centers. It combines customizable (variable) filter life, a compact shelf design, 3-port filter with filter life tracking technology, while exceeding expectations for value and efficacy.

100/120 Volt Systems VV120
 220/240 Volt Systems VV220
 (includes one filter and one footswitch)

100/120 Volt Systems VV120NF
 220/240 Volt Systems VV220NF
 (includes one filter and one footswitch)

ViroSafe® ViroVac® Filter VS353 Series
 Filter Life 18, 24, 35 hours (depending on flow rate)



Pneumatic Footswitch
(included)

ClearView™ Smoke Evacuation System

CONMED's ClearView™ Smoke Evacuation System is a compact, quiet and effective smoke evacuation solution with state-of-the-art ULPA filtration to combat airborne hazards by removing 99.999% of the smoke contaminants¹. Surgical smoke contains over 80 chemicals^{2,3} that have the same level of mutagenicity as 27-30 cigarettes⁴.

ClearView Smoke Evacuators

ClearView Smoke Evacuators – 100/120V,
 Includes: AC Power Cord, Automatic Activation Device,
 Pneumatic Footswitch, Operator's Manual,
 and one filter60-8585-120

ClearView Smoke Evacuators – 220/240V,
 Includes: AC Power Cord, Automatic Activation Device,
 Pneumatic Footswitch, Operator's Manual,
 and one filter60-8585-230

ClearView Accessories

ClearView Replacement Filter, 2/case60-8590-001

ClearView Automatic Activation Device60-8597-001

CONMED Fluid Trap, For use with ClearView Unit,
 10/pkg60-8596-001



¹Author; Environmental Protection Agency EPA-CICA Fact Sheet, EPA-425/F-03-023. Title: Air Pollution Control Technology Fact Sheet [2013].

²Al Sahaf OS, Vega-Carrascal I, Cunningham FO, McGrath JP, Bloomfield FJ. Chemical composition of smoke produced by high-frequency electrosurgery. *Ir J Med Sci.* 2007; 176(3):229-232.

³Moot AR, Ledingham KM, Wilson PF, et al. Composition of volatile organic compounds in dia thermally plume as detected by selected ion flow tube mass spectrometry. *ANZ J Surg.* 2007;77 (1-2):20-23.

⁴Hill DS, O'Neill JK, Powell RJ, Oliver DW. Surgical smoke—a health hazard in the operating theatre: a study to quantify exposure and a survey of the use of smoke extractor systems in UK plastic surgery units. *J Plast Reconstr Aesthet Surg.* 2012; 65(7):911-916.



Pneumatic Footswitch
(included)



EZLink®
(sold separately; catalog #: EZLINK01)



ViroSafe® Fluid Trap
(sold separately; catalog #: VSFT10)

Direct connect cable as also available -
DCCM01 / DCCOV01

Porta PlumeSafe® 604 - Surgical Smoke Evacuator

Porta PlumeSafe® 604 is an ideal surgical smoke evacuator for veterinarian and non-acute care settings where moderate flow is needed. The unit is portable, easy to use, and features patented technology to track filter life.

100/120 Volt 50/60 Hz PPS604
(includes one footswitch; filter sold separately)

Porta PlumeSafe® 604 Replacement Filters
VS06, VSXLL, VSXLLT, VSEY, VSOH, and VSVET Series
Filter Life6-24 hours (depending on model)

PlumeSafe® Turbo - Surgical Smoke Evacuator

PlumeSafe® Turbo is a powerful portable surgical smoke evacuator designed with sufficient flow for the aesthetic market. It features turbo suction power, an interactive LCD display and filter tracking technology. It can easily be placed on a counter, shelf, floor or other location convenient to the operative area.

100/120 Volt 50/60 HzPSWTURBO AS
 220/240 Volt 50/60 HzPSWTURBO_AS/220
 (includes one footswitch; filter sold separately)

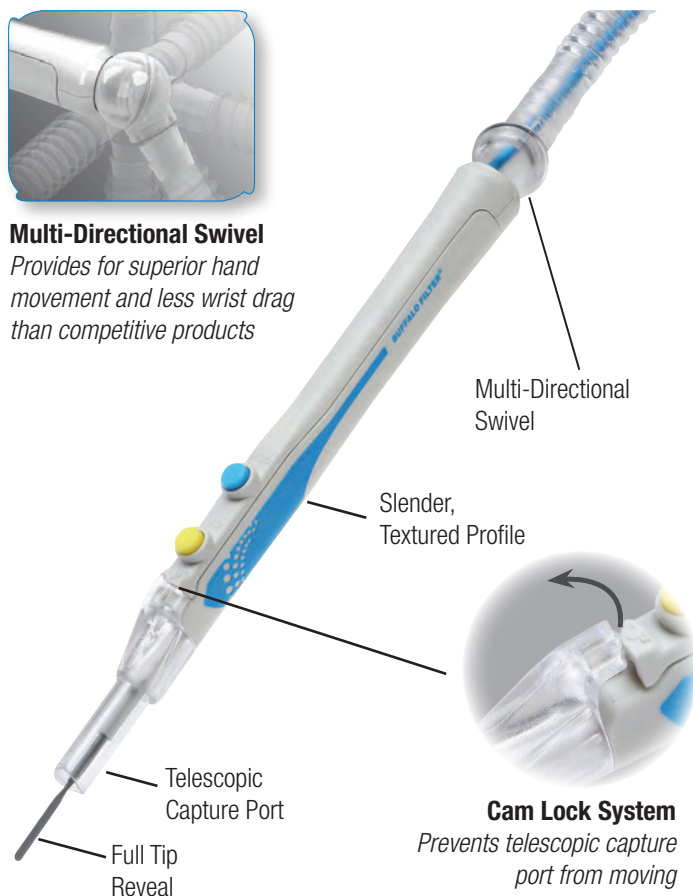
PlumeSafe® Turbo Replacement Filters
 VS06, VSXLL, VSXLLT, VSEY, VSOH, and VSVET Series
 Filter Life 6-24 hours (Depending on Filter model and flow rate)



Pneumatic Footswitch
(included)

**Multi-Directional Swivel**

Provides for superior hand movement and less wrist drag than competitive products



Multi-Directional Swivel

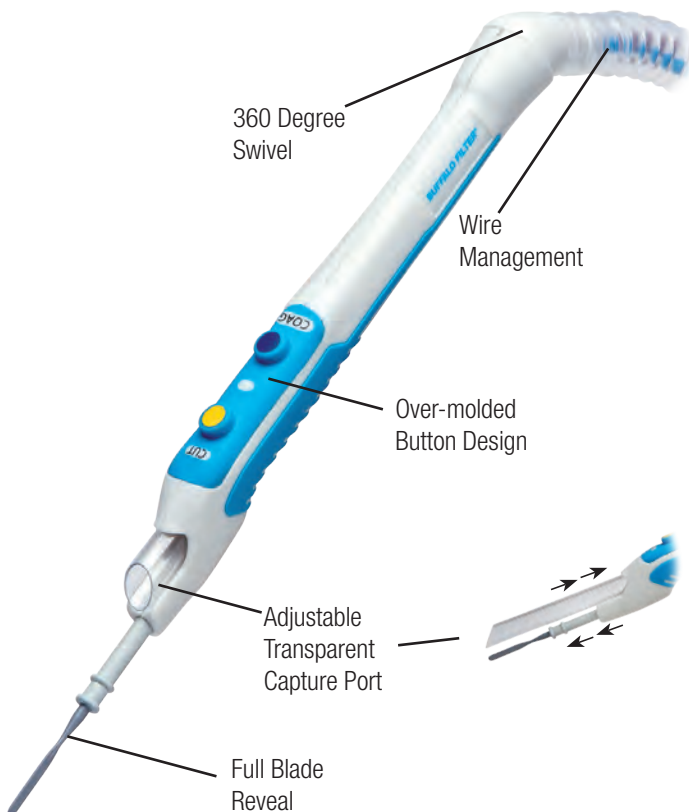
Slender, Textured Profile

Telescopic Capture Port

Full Tip Reveal

Cam Lock System

Prevents telescopic capture port from moving



360 Degree Swivel

Wire Management

Over-molded Button Design

Adjustable Transparent Capture Port

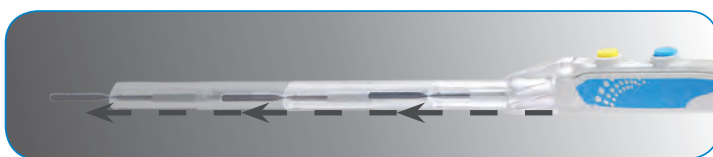
Full Blade Reveal

PlumePen® Ultra - Surgical Smoke Evacuation Pencils

No matter the surgical procedure, PlumePen® Ultra is up to the challenge. An addition to the PlumePen portfolio, Ultra offers a telescopic capture port with an advanced swivel design that will delight the surgeon with superior hand movement and less wrist drag. The Cam Lock System assures secure positioning allowing for precise application of energy to targeted tissue while removing hazardous surgical smoke.

PlumePen Ultra (Non-Stick ESU Blade) 20/casePLPUL2020
(Includes 3/8 in (9.5 mm) x 10 ft (3 m) hose/tubing & 7/8 in (22 mm) filter port adapter.)

PlumePen Ultra (Non-Stick ESU Blade) 20/casePLPUL2520
(Includes 3/8 in (9.5 mm) x 15 ft (4.6 m) hose/tubing & 7/8 in (22 mm) filter port adapter.)

**Telescopic Capture Port**

Extends up to 5.3 in (135 mm)

PlumePen® Elite - Surgical Smoke Evacuation Pencils

Pushing the boundaries through design innovation, PlumePen® Elite features a compact, ultra slim, ergonomic design that is significantly smaller than competitive electrosurgical smoke pencils. PlumePen Elite offers the comfort and advanced feature set surgeons demand.

PlumePen Elite (Stainless Steel ESU Blade)
5/case.....PLP1005
20/case.....PLP1020
(Includes 3/8 in (9.5 mm) x 10 ft (3 m) tubing with adapter to 7/8 in (22 mm) port.)

PlumePen Elite (Stainless Steel ESU Blade)
5/case.....PLP1505
20/case.....PLP1520
(Includes 3/8 in (9.5 mm) x 15 ft (4.6 m) tubing with adapter to 7/8 in (22 mm) port.)

PlumePen Elite (Non-Stick ESU Blade)
5/case.....PLP2005
20/case.....PLP2020
(Includes 3/8 in (9.5 mm) x 10 ft (3 m) tubing with adapter to 7/8 in (22 mm) port.)

PlumePen Elite (Non-Stick ESU Blade)
5/case.....PLP2505
20/case.....PLP2520
(Includes 3/8 in (9.5 mm) x 15 ft (4.6 m) tubing with adapter to 7/8 in (22 mm) port.)

PlumePen® Pro Surgical Smoke Evacuation Pencils

PlumePen® Pro is as a cost effective solution combining precision surgical smoke management and electrosurgery without compromising quality or features. Pro is a perfect solution for surgeries where a pencil adapter is less optimal.

PlumePen Pro (Non-Stick ESU Blade)

20/case..... PLPRO4020
(Includes 3/8 in (9.5 mm) x 10 ft (3 m) tubing with adapter to 7/8 in (22 mm) port.)

PlumePen Elite (Non-Stick ESU Blade)

20/case..... PLPRO4520
(Includes 3/8 in (9.5 mm) x 15 ft (4.6 m) tubing with adapter to 7/8 in (22 mm) port.)

Capture Ports (X-ray detectable)

20/case..... PROTIP420
(Accommodates 4 in [102 m] electrodes)

Capture Ports (X-ray detectable)

20/case..... PROTIP520
(Accommodates 5 in [127 m] electrodes)

Capture Ports (X-ray detectable)

20/case..... PROTIP620
(Accommodates 6 in [152 m] electrodes)



Additional capture ports available to accommodate 4 in (102 mm), 5 in (127mm), and 6 in (152 mm) electrodes.



SnapEvac® Surgical Smoke Evacuation Pencils

SnapEvac™ is an ergonomically designed smoke evacuation electrosurgical pencil adapter that transforms most hyfrecator hand-switch pencils and electrosurgical pencils into a surgical smoke evacuation device that captures smoke plume at the point of creation.

SnapEvac

20/case..... SnapEvac20
(Designed using ABS plastic and a polycarbonate capture port. Includes 10 ft (3 m) tubing with a 7/8 in (22 mm) cuff.)





GoldVac® Slim Smoke Evacuation Pencils

GoldVac Slim Pencils offer an ergonomic design – allowing for a surgical experience and technique that’s virtually indistinct from a standard pencil. Tapered lumen allows for unobstructed visualization of the target tissue.

GoldVac Slim Smoke Evacuation Pencils

- GoldVac Slim Pencil, Push Button,
1" UltraClean Blade Electrode
10' of 9.5mm tubing, Disposable, 20/case60-7610-001
- GoldVac Slim Pencil, Push Button,
1" UltraClean Blade Electrode
15' of 9.5mm tubing, Disposable, 20/case60-7670-001

GoldVac® Smoke Evacuation Pencils

GoldVac Pencils allow the surgeon to position the 6" extendable smoke elimination tube anywhere along the active electrode for effective smoke capture, with accessibility and visibility of the surgical site. Swivels 360° to eliminate wrist drag, and enable maximum maneuverability.

GoldVac Smoke Evacuation Pencils

- GoldVac Pencil, Push Button, 1" UltraClean Blade Electrode,
10' Tubing, Disposable, 10/case60-7510-005
- GoldVac Pencil, Rocker Switch, 1" UltraClean Blade Electrode,
10' Tubing, Disposable, 10/case60-7520-005
- GoldVac Pencil, Foot Control, 1" UltraClean Blade Electrode,
10' Tubing, Disposable, 10/case60-7530-005
- GoldVac Pencil, Push Button, 1" UltraClean Blade Electrode,
15' Tubing, Disposable, 10/case60-7570-005
- GoldVac Pencil, Rocker Switch, 1" UltraClean Blade Electrode,
15' Tubing, Disposable, 10/case60-7580-005

GoldVac UltraClean Electrodes

- 4" GoldVac UltraClean Blade, 25/case60-7524-001
- 6" GoldVac UltraClean Blade, 25/case60-7526-001
- 1" GoldVac UltraClean Blade with Extended Insulation
25/case.....60-7521-001
- 4" GoldVac UltraClean Blade with Extended Insulation
25/case.....60-7522-001
- 6" GoldVac UltraClean Blade with Extended Insulation
25/case..... 60-7523-001

ClearVac® Smoke Evacuation Pencils

ClearVac® Pencils provide a cost effective solution to remove surgical smoke. Comfortable grip, lightweight tubing and multiple configurations makes transition easier to meet your specific clinical needs.

ClearVac Electrosurgical Pencil Smoke Attachment with 12" of 10mm Tubing and 5-in-1 Adapter, Single Use, Sterile, 25/case60-6827-001A

ClearVac GoldLine Push Button Electrosurgical Pencil Smoke Attachment with 4' of 10mm Tubing and 6' of 22mm Tubing, Standard Blade Electrode, Holster, Single Use, Sterile, 10/case60-6828-001A

ClearVac GoldLine Rocker Switch Electrosurgical Pencil Smoke Attachment with 4' of 10mm Tubing and 6' of 22mm Tubing, Standard Blade Electrode, Holster, Single Use, Sterile, 10/case60-6829-001A

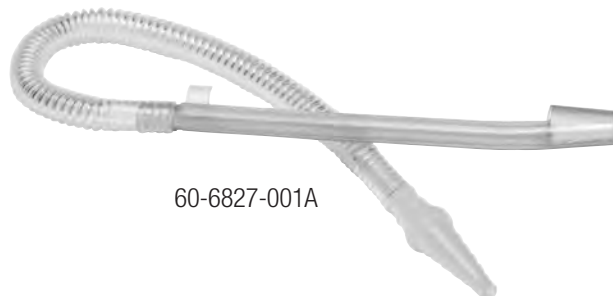
ClearVac GoldLine Push Button Electrosurgical Pencil Smoke Attachment with 4' of 10mm Tubing and 6' of 22mm Tubing, UltraClean Blade Electrode, Holster, Single Use, Sterile 10/case60-6828-005A

ClearVac GoldLine Rocker Switch Electrosurgical Pencil Smoke Attachment with 4' of 10mm Tubing and 6' of 22mm Tubing, UltraClean Blade Electrode, Holster, Single Use, Sterile, 10/case60-6829-005A

ClearVac Electrosurgical Smoke Evacuation Handpiece Attachment with 4' of 10mm Tubing and 6' of 22mm Tubing, Single Use, Sterile, 10/case60-6839-001A

ClearVac GoldLine Foot Control Electrosurgical Pencil Smoke Attachment with 4' of 10mm Tubing and 6' of 22m Tubing, UltraClean Blade Electrode, Holster, Single Use, Sterile, 10/case138663A

Y-Adapter, Connects two smoke evacuation pencils to Smoke Evacuation Unit 5/case60-8054-001



60-6827-001A



60-6828-005A



PA1025, PA1025CB,
PA2010, PA2010CB



PA2010B, PA2010BCB

PenAdapt® - Surgical Smoke Evacuation Pencils

PenAdapt® is an ergonomically designed pencil adapter that captures surgical smoke at the point of creation. Expertly engineered to position the capture inlet as close to the point of surgical smoke creation as possible, PenAdapt was designed to minimize any change to the feel of the pencil or the surgeon's line of vision. PenAdapt accommodates most electrosurgical pencils.

PenAdapt
Ideal for wall suction applications.
25/case..... PA1025
(Includes 3/8 in (9.5 mm) x 1 ft (30.5 cm) tubing with an adapter to 3/8 in (9.5 mm) tube.)

PenAdapt (Cut-back)
Ideal for wall suction applications. Cut-back adapter provides increased visibility.
25/case..... PA1025CB
(Includes 3/8 in (9.5 mm) x 1 ft (30.5 cm) tubing with an adapter to 3/8 in (9.5 mm) tube.)

PenAdapt
Ideal for surgical smoke evacuator applications.
10/case..... PA2010
(Includes 3/8 in (9.5 mm) x 4 ft (1.22 m) tubing with an adapter to 7/8 in (22 mm) x 6 ft (1.8 m) tube.)

PenAdapt (Cut-back)
Ideal for surgical smoke evacuator applications. Cut-back adapter provides increased visibility.
10/case..... PA2010CB
(Includes 3/8 in (9.5 mm) x 4 ft (1.22 m) tubing with an adapter to 7/8 in (22 mm) x 6 ft (1.8 m) tube.)

PenAdapt
Ideal for attachment to reusable electrosurgical pencil applications.
10/case..... PA2010B
(Includes 3/8 in (9.5 mm) x 4 ft (1.22 m) tubing with an adapter to 7/8 in (22 mm) x 6 ft (1.8 m) tube.)

PenAdapt
Ideal for attachment to reusable electrosurgical pencil applications. Cut-back adapter provides increased visibility.
10/case..... PA2010BCB
(Includes 3/8 in (9.5 mm) x 4 ft (1.22 m) tubing with an adapter to 7/8 in (22 mm) x 6 ft (1.8 m) tube.)

1/4 in (6.4 mm) Smoke Evacuation Tubing

NON-STERILE

Excellent for use with filtered wall suction and for situations where space is limited.

1/4 in (6.4 mm) x 2 ft (.6 m) 5/case ST10105

3/8 in (9.5 mm) Smoke Evacuation Tubing

STERILE

Excellent for use in an office setting and in small pockets where space is limited.

3/8 in (9.5 mm) x 10 ft (3.0 m) 10/caseVT38S1010

7/8 in (22 mm) Smoke Evacuation Tubing

The most common and versatile size of tubing, combining a compact size and increased airflow.

STERILE

7/8 in (22 mm) x 6 ft (1.8 m) 24/caseVT10424

7/8 in (22 mm) x 10 ft (3.0 m) 24/caseVT10624

NON-STERILE

7/8 in (22 mm) x 6 ft (1.8 m) with (12) 7/8 in tubing-to-tubing connectors (extension tubing) 24/caseVT10324

7/8 in (22 mm) x 10 ft (3.0 m) 10/case VT10524-10

7/8 in (22 mm) x 10 ft (3.0 m) 24/caseVT10524

7/8 in (22 mm) x 6 ft (1.8 m) 6/case VT78-6

7/8 in (22 mm) x 2.5 ft (.7 m) (Replaces suction canister connecting tube) 10/caseVT10610

1-1/4 in (32 mm) Smoke Evacuation Tubing

A wide diameter tubing, ideal for cases producing large amounts of smoke and odors such as aesthetic procedures and Trans-urethral Resection of the Prostate (TURP) procedures.

STERILE

1-1/4 in (32 mm) x 6 ft (1.8 m) 6/caseVT10206

NON-STERILE

1-1/4 in (32 mm) x 6 ft (1.8 m) 6/caseVT10106

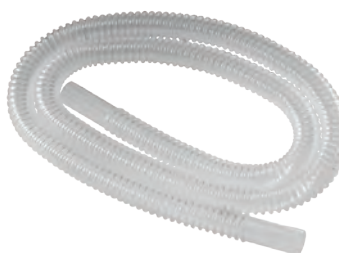
1-1/4 in (32 mm) x 10 ft (3.0 m) 6/caseVT10306

1-1/4 in (32 mm) x 2 ft (.6 m) 10/caseVT10510

1-3/8 in (35 mm) Erbiu™ Yag Tubing Kit

NON-STERILE

1-3/8 in (35 mm) x 6 ft (1.8 m) tube (replace as needed) and six 2 ft (.6 m) length tubes with integral wand & sponge guard to be replaced each procedure (1/kit) VTEYKIT





Speculum Tubing

STERILE

Ideal for connection to surgical speculum, laryngoscope, or small area applications.

7/8 in (22 mm) x 6 ft (1.8 m) with 7/8 in (22 mm) to 1/4 in (6.4 mm) reducer to 1/4 in (6.4 mm) x 2 ft (.6 m) tubing (5/case)..... VTESU05

NON-STERILE

Ideal for connection to surgical speculum or small area applications.

7/8 in (22 mm) x 6 ft (1.8 m) with 7/8 in (22 mm) to 1/4 in (6.4 mm) reducer to 1/4 in (6.4 mm) x 2 ft (.6 m) tubing (5/case) PSFTS05

Pencil Adapter Tubing Set

STERILE

7/8 in (22 mm) x 6 ft (1.8 m) with 7/8 in (22 mm) to 3/8 in (9.5 mm) reducer and 3/8 in (9.5 mm) x 4 ft (1.2 m) (10/case) VTVIC10

7/8 in (22 mm) Tubing with Wand and Sponge Guard

STERILE

7/8 in (22 mm) x 6 ft (1.8 m) tubing with 8 in (20 cm) integral wand and sponge guard (24/case)VTWT424

7/8 in (22 mm) x 10 ft (3.0 m) tubing with 8 in (20 cm) integral wand and sponge guard (24/case)VTWT624

7/8 in (22 mm) x 14 ft (4.3 m) tubing with 8 in (20 cm) integral wand and sponge guard (5/case)VTWT805

7/8 in (22 mm) x 10 ft (3.0 m) tubing with 8 in (20 cm) integral wand and sponge guard with 7/8 in to 1-3/8 in (35 mm) adapter (10/case).....VTWTS10

NON-STERILE

7/8 in (22 mm) x 6 ft (1.8 m) tubing with 8 in (20 cm) integral wand and sponge guard (24/case)VTWT324

7/8 in (22 mm) x 10 ft (3.0 m) tubing with 8 in (20 cm) integral wand and sponge guard (24/case)VTWT524

1-1/4 in (32 mm) Tubing with Wand and Sponge Guard

STERILE

1-1/4 in (32 mm) x 6 ft (1.8 m) tubing with 8 in (20 cm) integral wand and sponge guard (6/case).....VTWT206

1-3/8 in (35 mm) Tubing with Wand and Sponge Guard

STERILE

1-3/8 in (35 mm) x 6 ft (1.8 m) with wand and sponge guard (5/case).....VTWT505

1-3/8 in (35 mm) x 10 ft (3.0 m) with wand and sponge guard (5/case).....VTWT515

NON-STERILE

1-3/8 in (35 mm) x 6 ft (1.8 m) with wand and sponge guard (6/case).....VTWT506

7/8 in (22 mm) Tubing with Adapters

STERILE

7/8 in (22 mm) to 3/8 in (9.5 mm) reducer fitting with
7/8 in (22 mm) x 6 ft (1.8 m) tubing (5/case)VT10405

STERILE

7/8 in (22 mm) to 1/4 in (6.4 mm) reducer fitting with
2 ft (.6 m) x 1/4 in (6.4 mm) tubing (10/case) RF10210

NON-STERILE

7/8 in (22 mm) to 1/4 in (6.4 mm) reducer fitting with
2 ft (.6 m) x 1/4 in (6.4 mm) tubing (10/case) RF10110

Reducer Fittings/Adapters

NON-STERILE

7/8 in (22 mm) to 1/4 in (6.4 mm) reducer fitting
(12/case) RF10112

NON-STERILE

7/8 in (22 mm) to 1/4 in (6.4 mm) reducer fitting
with 2 in (5.1 cm) cuff (24/case) RF12524

NON-STERILE

7/8 in (22 mm) to 3/8 in (9.5 mm) reducer fitting
with 2 in (5.1 cm) cuff (24/case) RF783824

NON-STERILE

7/8 in (22 mm) to 3/8 in (9.5 mm) reducer fitting
(12/case) RF10512

NON-STERILE

1-3/8 in (35 mm) to 7/8 in (22 mm) reducer fitting
(5/case) RF10705

NON-STERILE

1-3/8 in (35 mm) to 3/8 in (9.5 mm) reducer fitting
(10/case) RF13810





Laser Resistant Wands with Sponge Guard

STERILE	
7/8 in (22 mm) x 8 in (20 cm) (10/case).....	WLRT410
NON-STERILE	
1-1/4 in (32 mm) x 8 in (20 cm) (3/case).....	WLRT003
7/8 in (22 mm) x 8 in (20 cm) (3/case).....	WLRT303

Sponge Guard

NON-STERILE	
Sponge guard fits 7/8 in (22 mm) tubing (10/case)	WTIPS10
Sponge guard fits 1-1/4 in (32 mm) to 1-3/8 in (35 mm) tubing (10/case).....	WTIPL10

PlumePort® ActiV®

PlumePort® ActiV® is the first line of defense designed for safe, effective removal of surgical smoke during laparoscopic procedures. ActiV easily attaches to standard trocars and utilizes readily available suction systems providing noiseless operation.

With a built-in fluid trap, moisture is effectively managed throughout the entire procedure to ensure uninhibited flow and prevent filter saturation without compromising the integrity of the filtration media.

ActiV provides up to 50% more flow capability than competitive passive laparoscopic filters while maintaining ULPA filtration and significantly outperforms competitive devices when exposed to high moisture environments. In addition to ULPA filtration, ActiV contains activated carbon known to adsorb gases.

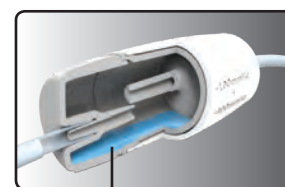
PlumePort ActiV (10/case) PP010CS



Compact Housing Design
Non-Phthalate Tubing



Flow Control Settings
Flow Adjustment Valve

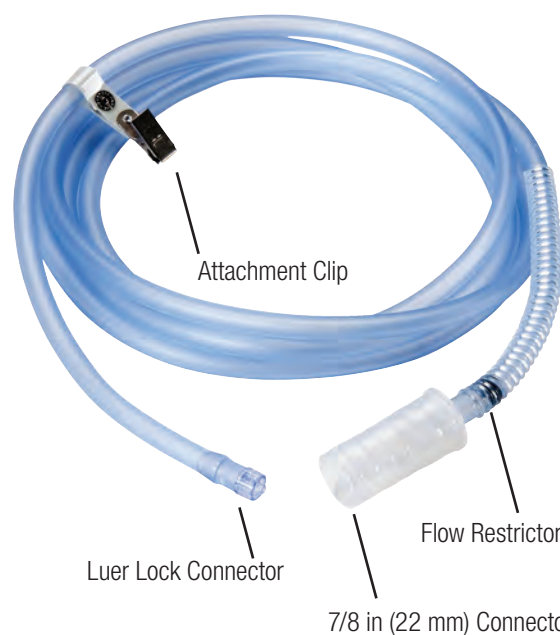


Built-In Fluid Trap

PlumePort® SEO - Laparoscopic Solutions

PlumePort® SEO easily connects from a standard trocar to a smoke evacuator for efficient and safe removal of surgical smoke during laparoscopic procedures. Utilizing available surgical smoke evacuators and coupling it with this flow controlled device, PlumePort SEO provides fast and safe smoke management while maintaining peritoneal distention.

PlumePort SEO (12/case)..... PP012SEO



Attachment Clip

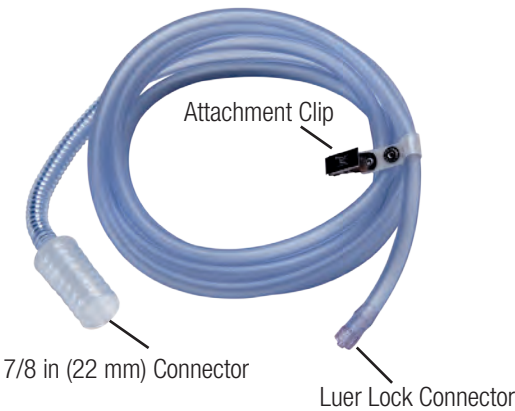
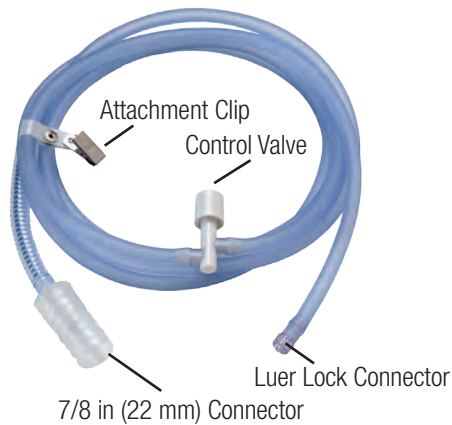
Luer Lock Connector

Flow Restrictor

7/8 in (22 mm) Connector



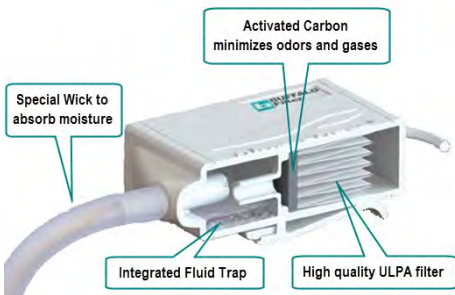
Adjustable Flow Control



PlumePort®

PlumePort® is a passive laparoscopic smoke filtration device with integrated ULPA filtration coupled with activated carbon to safely filter the aerosolized contents of peritoneal smoke during laparoscopy. Containing more than two times the ULPA media as competitive passive devices, and a dual management moisture control process of a wicking agent and fluid trap, PlumePort offers essential media integrity for greater protection during longer cases.

PlumePort (10/case) PP010



PlumePort® SEV

PlumePort® SEV is a sterile laparoscopic smoke filtration device that connects from a standard surgical trocar to a smoke evacuator for efficient and safe removal of surgical smoke during laparoscopic procedures. The surgical smoke evacuation is controlled via the surgical smoke removal valve.

PlumePort SEV (12/case)..... BLAP100V

PlumePort® SE

PlumePort® SE is sterile smoke management tubing that connects from a standard surgical trocar to a smoke evacuator for efficient and safe removal of surgical smoke during laparoscopic procedures.

PlumePort SE (12/case)..... BLAP100

LaparoVue® Visibility System

LaparoVue is an all-in-one solution designed to take the complexity out of achieving optimal visualization. An easy to use, disposable multi-purpose device that warms, white balances, cleans and defogs, LaparoVue® eliminates the necessity for multiple product purchases.

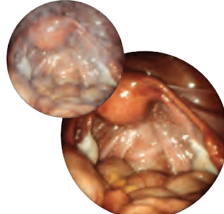
LaparoVue® Visibility System (10/case)LAPVUE10



warms &
white balances



cleans



defogs*

* Photographs are representative of a fogged and clear/defogged lens but do not reflect actual product use.

LaparoLight™ Veress Needle

LaparoLight Veress Needle advances laparoscopic access with SafetyView™ Illumination Technology, a new safety enhancement developed so surgeons no longer have to blindly guess when the peritoneal cavity has been entered. A light immediately alerts them to entry. The “illuminated” visual placement indicator enhances current safety protocols and provides increased assurance to the surgeon during blind insertion.

LaparoLight™ Veress Needle, 12cm
(12/case)LLVN12012

LaparoLight™ Veress Needle, 12cm
(12/case)LLVN15012



VueTip® Trocar Swab Accessory Kit
(also sold separately; catalog # VueTip10)



LLVN12012



VueTip® Trocar Swab Accessory Kit

Kit contains both a radiopaque Microfiber Cloth (non-abrasive) that can be used to clean the scope lens and two VueTip Trocar Swabs for 3–7 mm and 7–12 mm trocar cannulas.

(10/case).....VUETIP10



EZLink®

Activation Device used to remotely turn all current Buffalo Filter surgical smoke evacuators on and off in conjunction with Electrosurgical Unit activation saving filter life.

Adjustable delay allows for capture of residual smoke that may be present after deactivation of electrosurgery devices.

Multiple cautery pencils can be accommodated with one EZLink device providing savings and convenience to facility.

Easy set-up; requires no programming.

(1/case).....EZLINK01



Pneumatic Footswitch

Designed to work with all current Buffalo Filter surgical smoke evacuators.

Features 10 ft length (3.0 m).

(1/case).....FS10004



ViroSafe® Fluid Trap

Designed to capture fluids to help maintain the integrity of the filtration system and assist with maintaining filter life.

Translucent design with simple to read measurement increments (holds up to 100 cc fluid capacity).

Easy to attach and remove with cap holder for easy storage of caps during use.

7/8 in (22 mm) and 1/4 in (6.4 mm) tubing connection ports.

Fits 7/8 in (22 mm) port of Buffalo Filter ViroSafe Filters.

(10/case).....VSFT10



Direct Connect Cables

Direct Connect Cable for ConMed Electrosurgical Units (certain models only) and Buffalo Filter Smoke Evacuators

(1/case).....DCCM01

Direct Connect Cable for Covidien Electrosurgical Units (certain models only) and Buffalo Filter Smoke Evacuators

(1/case).....DCCOV01

PlumePen® Pro Capture Ports

4 in (102 mm) Capture Ports for PlumePen Pro
(20/case) PROTIP420

5 in (127 mm) Capture Ports for PlumePen Pro
(20/case) PROTIP420

6 in (152 mm) Capture Ports for PlumePen Pro
(20/case) PROTIP620

Y Adapter

7/8 in (22 mm) Y Adapter with connectors.
(1/case) ADP22X22Y

Surgical Laser Masks

High efficiency 0.1 micron filtration media surgical masks.
(50/case) SML0F50

(300/case) SML0F300

LaseAdapt® SC Contour TRL Hand Piece Adapter

Designed to attach directly to the hand piece LaseAdapt SC series of laser attachments capture laser generated airborne contaminants (LGAC's) and eliminates need to hold a surgical smoke evacuation tube.

7/8 in (22 mm) connector
(10/case) LA3010EY10

LaseAdapt® ProFractional Therapy Hand Piece Adapter

Designed for the Sciton® ProFractional Therapy™ Laser System
Designed to attach directly to the hand piece, LaseAdapt SC series of laser attachments capture laser generated airborne contaminants (LGAC's) and eliminates need to hold a surgical smoke evacuation tube.

7/8 in (22 mm) connector
(10/case) LA3010PF10

LaseAdapt Hand Piece Adapter Clips

LaseAdapt Reuseable Tubing Clips.

Designed for the Sciton® Contour TRL™ Erbium Scanner and ProFractional Therapy™ Laser Systems.

(4/case) LA3010CL4





Armstand

Great for office applications. Provides hands-free positioning of the smoke evacuation tubing. Velcro tubing fasteners included.
10 in (25.4 cm) x 10 in (25.4 cm) x 34 in (86.4 cm)
(1/case)..... ARMSTAND



EvacuCart™

Lightweight, transport cart with locking wheels for Buffalo Filter branded surgical smoke evacuators.
15 in (38.1 cm) x 17.5 in (44.5 cm) x 32 in (81.3 cm)
(1/case)..... ETC01



ViroVac® Wall Mount Kit

Wall mount kit designed for ViroVac surgical smoke evacuator.
Includes base and wall mount plates, screws, and tri-wall anchors to properly mount unit.
(1/case)..... VVWM01

ViroSafe® 6 Filter

Designed to fit PlumeSafe® Turbo; Porta PlumeSafe® 604

Lasts for 6 hours of smoke evacuation time and captures 0.1 to 0.2 micron particles at 99.999% efficiency.

Dual male ports — 7/8 in (22 mm) and 1–1/4 in (32 mm).

(1/case) VS06001

(2/case) VS06002

(4/case) VS06004

ViroSafe® 6 Twin Port Filter

Designed to fit PlumeSafe® Turbo; Porta PlumeSafe® 604

Lasts for 6 hours of smoke evacuation time.

Twin male ports — 7/8 in (22 mm).

(4/case) VS06T04

ViroSafe® Extra Long Life Filter

Designed to fit PlumeSafe® Turbo; Porta PlumeSafe® 604

Lasts for 18 hours of smoke evacuation time.

Dual male ports — 7/8 in (22 mm) and 1–1/4 in (32 mm).

(2/case) VSXLL02

(4/case) VSXLL04

ViroSafe® Extra Long Life Twin Port Filter

Designed to fit PlumeSafe® Turbo; Porta PlumeSafe® 604

Lasts for 18 hours of smoke evacuation time.

Twin male ports — 7/8 in (22 mm).

(1/case) SING-VSXLLT

(2/case) VSXLLT02

(4/case) VSXLLT04





ViroSafe® Veterinary Filter

Designed to fit PlumeSafe® Turbo; Porta PlumeSafe® 604
Lasts for 24 hours of smoke evacuation time and captures 0.1 to 0.2 micron particles at 99.999% efficiency.
Dual male ports — 7/8 in (22 mm) and 1-1/4 in (32 mm)
Most economical choice for animal hospitals and clinics.
(1/case).....VSVET01



ViroSafe® Erbium: YAG Pre-filter

Designed to fit ViroSafe® Erbium: YAG main filter
Specifically designed for use with Erbium: Yag laser applications.
Designed to be used for 1-3 procedures, depending on application.
(4/case).....BFEY04PF



ViroSafe® Erbium: YAG Filter

Designed to fit PlumeSafe® Turbo; Porta PlumeSafe® 604
Specifically designed for use with the Erbium: Yag laser applications.
Lasts for 12 hours of smoke evacuation time when used with pre-filters BFEY04PF and captures particles 0.1 to 0.2 micron particles at 99.999% efficiency.
Dual male ports — 7/8 in (22 mm) and 1-1/4 in (32 mm).
(1/case).....SING VSEY



ViroSafe® Erbium: YAG Kit

Designed to fit Erbium: Yag laser applications
Using Erbium: YAG pre-filters helps to protect the efficacy of the ViroSafe® Erbium: YAG main filter (ensuring that it lasts for 12 hours of smoke evacuation time).
The pre-filter has a 1-3/8 in (35 mm) male port at each end—one to attach to the 1-1/4 in (32 mm) opening on the Main Erbium: YAG filter and another to attach to a 1-3/8 in (35 mm) tubing set.
Efficiency
Main Filter: captures particles 0.1 to 0.2 micron particles at 99.999% efficiency
Pre-filter: 0.3–0.5 micron filtration
Usage Time
Main Filter: 12 hours
Pre-filter: 1–3 procedures
(1 Main Filter, 4 Pre-filters) VSEY1-4



Pre-filter

Not available in the United States
Pre-filter, Single Use
(20/case).....PRFIL20

ViroSafe® Odor / Hair Removal Filter

Designed to fit PlumeSafe® Turbo; Porta PlumeSafe® 604

Ideal for procedures such as laser hair removal that create malodorous smoke and gases.

Lasts for 24 hours of smoke evacuation time and captures 0.1 to 0.2 micron particles at 99.999% efficiency.

Dual male ports — 7/8 in (22 mm) and 1-1/4 in (32 mm).

(1/case) VSOH001

(2/case) VSOH002

ViroSafe® Pre-Filter

Designed to fit ViroSafe® main filter

Single port pre-filter may be attached to a ViroSafe main filter to help capture small amounts of liquid and particulate to protect and maintain its efficacy. This pre-filter should be changed after every use.

(10/case) BFPF7/8-10

ViroSafe® 12 Filter

Designed to fit PlumeSafe® 1202 (discontinued)

Lasts for 24 hours of smoke evacuation time and captures 0.1 to 0.2 micron particles at 99.999% efficiency.

Dual ports — 7/8 in (22 mm) or 1-1/4 in (32 mm)

(1/case) VS12D01

ViroSafe® ViroVac® Filter

Designed to fit ViroVac®

4 layers of proven filtration gross particulate, ULPA media, activated carbon, and post filter.

Last up to 35 hours of smoke evacuation time and captures 0.1 to 0.2 micron particles at 99.999% efficiency.

Hidden ports reduce the risk to caregivers of cross contamination.

3-port filter — 1/4 in (6.4 mm), 3/8 in (9.5 mm) and 7/8 in (22 mm)

(1/case) VS353

(2/case) VS35302

(4/case) VS35304

ViroSafe® VisiClear® Filter

Designed to fit VisiClear®

Safeport Technology™ prevents the clinician from accidental touching an exposed port when not in use. Customized filter life for acute care applications.

Lasts for up to 35 hours of smoke evacuation time and captures 0.1 to 0.2 micron particles at 99.999% efficiency.

3-port filter — 1/4 in (6.4 mm), 3/8 in (9.5 mm) and 7/8 in (22 mm).

(1/case) VS135

(2/case) VS1352

(4/case) VS1354





BILF150 Multi-Use In-Line Filter

Captures particulate before it enters wall suction systems.
Ideal for connection to wall suction port.

ULPA rated media, 0.1 to 0.2 micron.

Economical and easy to use.

As recommended by AORN, surgical smoke should be filtered before it reaches the wall to protect suction systems.

(10/case).....BILF150



BILF200 Multi-Use In-Line Filter

Captures particulate before it enters wall suction systems.
Ideal for connection to canister tree

ULPA rated media, 0.1 to 0.2 micron.

Economical and easy to use.

Single 1/4 in (6.4 mm) to 3/8 in (9.5 mm) detached tube.

(10/case).....BILF200

Buffalo Filter offers an expansive array of filters for OEM and Competitive manufacturer's of surgical smoke evacuators. We have replacement filters for the following manufacturers:

Berchtold: A series of replacement filters designed for the Berchtold Phoenix and TeleVac.

ConMed: Replacement filters for the CMIS, ConMed Aspen Vac and Hyfre-VAC filters

Cooper Surgical: Replacement pre-filters and filters for Cooper Surgical System 6080

EDGE: Replacement Pre-filters and filters for EDGE S.A.F.E. System

QuantaVac: Replacement filters for QuantaVac System

Stryker: Replacement filters for StrykeVac, StrykeVac 3 and Neptune 2 Ultra

Stackhouse: Replacement pre-filters and filters for Stackhouse ES-2000, LFA-100, MiniVac, AirSafe VersaVac and Point OneSystem

Surgimedics: Replacement pre-filters and filters for Surgimedics

TRUMPF: Replacement filters for TRUMPF EasyVac

Valleylab: Replacement pre-filters and filters for Valleylab Optimumm, Airforce, ValleyVac

Please cross-reference the manufacturer's filter model number below to the equivalent Buffalo Filter replacement filter for that system.

Berchtold TeleVac & TeleVac LT

Replaces Berchtold TELEVAC LT and Surgimedics 901428

Lasts for 8 hours of smoke evacuation time.

7/8 in (22 mm) port.

(4/case) BTL004

Berchtold Phoenix XS or X3 Filter

Replaces Berchtold TELEVAC XS/X3

Lasts for 8 hours of smoke evacuation time.

7/8 in (22 mm) port.

(4/case) BTLDS04

Cooper Surgical System 6080

Replaces Coastal Life 1101300, 901300-000; Cooper 6082; Intermed IG-6082; Surgimedics 901300, 901009; Valleylab E3515

Multi-fit pre-filter replacement with 7/8 in (22 mm) male port.

(3/case) BSUCF03

(3/case) BSUCF03V (with gasket)

Edge S.A.F.E. System Filters & Pre-filters

Replaces EDGE 20004 pre-filter

Pre-filter with a 7/8 in (22 mm) female and 1-1/4 in (32 mm) male port.

(5/case) BFE20004

Replaces EDGE 20009 Big Boy main filter

Main filter for Edge S.A.F.E. System.

(1/case) BFE20009

Replaces EDGE S.A.F.E. System main filter and pre-filters

Kit replaces both the main filter and pre-filter with a 7/8 in (22 mm) female and 1-1/4 in (32 mm) male port.

(Main Filter 1/Case), (Pre-Filter 5/Case) BFE_KIT





Stackhouse ES-2000 System Filters & Pre-filters

Replaces Lumenis 80000-002; Stackhouse ES-2000PF/12, 24204; Surgimedics 901405, 901406

Must be used with Buffalo Filter main filter BES2000ULC.

Single use.

(12/case).....BES2000PF



Replaces Stackhouse ES-2000PFC/12, 24205 and Surgimedics 901406, 901407

Must be used with Buffalo Filter main filter BES2000ULC.

Single use.

(12/case)..... BES2000PFC



Replaces Stackhouse ES-IWT-110/S, 24152 and Surgimedics 901414

Must be used with Buffalo Filter main filter BES2000ULC.

STERILE - 7/8 in (22 mm) x 10 ft (3.0 m) tubing.

(12/case).....BESIWT110



Replaces Stackhouse ES2000/ULC, 24211 and Surgimedics 901407

Must be used with Buffalo Filter pre-filter: BES2000PF, BES2000PFC, and BESIWT110

Lasts up to 25 hours of smoke evacuation time, depending on use.

(1/case)..... BES2000ULC



Stackhouse LFA-100 & Point One System Filters

Replaces Stackhouse LFS-103/3, 24001; Stackhouse LFS-103/12, 24033; Surgimedics 901410

(3/case).....BLFS103

(12/case).....BLFS101



Stackhouse AirSafe VersaVac I & II Filter

Replaces Edge 20012-03; Stackhouse ST-370-FRESH/3, 24300; Surgimedics 901408

(3/case)..... BST370ULC

Stackhouse MiniVac ST-1250

Replaces Conmed 60-5902-001; Cooper 395-703; Stackhouse STM-300, 24139-01; Surgimedics 901409; Valleylab E1091

Male port filter

(3/case)BSTM300



StrykeVac 1 & 2 ViroSafe® Filter

Designed to fit Integrated StrykeVac Smoke Evacuation System

Lasts up to 24 hours of smoke evacuation time.

4-port filter — 1/4 in (6.4 mm),
3/8 in (9.5 mm), 7/8 in (22 mm) and 1-1/4 in (32 mm).

(1/case) VSSV505

(2/case) VSSV50502



StrykeVac 3 ViroSafe® Filter

Designed to fit StrykeVac 3 Smoke Evacuation System

Lasts up to 24 hours of smoke evacuation time.

3-port filter — 1/4 in (6.4 mm),
3/8 in (9.5 mm) and 7/8 in (22 mm).

(1/case) VSSV301

(2/case) VSSV302

(4/case) VSSV304



Surgimedics 7/8 in (22 mm) Pre-filter

Replaces Cooper 52560, 6081; Surgimedics 901202 pre-filter

7/8 in (22 mm) port.

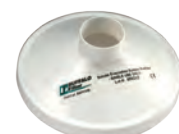
(30/case)BSPF_7-8-30



Surgimedics 1-3/8 in (32 mm) Pre-filter

Replaces Coastal Life 1101202, 901202-000; Cooper 6081; Intermed 2081, 6081; Surgimedics 901202 pre-filter

(30/case) BSPF030





QuantaVac System Main Filter

Designed to fit QuantaVac System

Lasts for 8 hours of smoke evacuation time.

(1/case)..... MSF8D-1



TRUMPF ViroSafe® Filter (EasyVac Filter for TRUMPF EasyVac)

Designed to fit TRUMPF EasyVac

Lasts for 8 hours of smoke evacuation time.

3-port filter — 1/4 in (6.4 mm), 3/8 in (9.5 mm)
and 7/8 in (22 mm).

(1/case)..... VSTR08

(4/case)..... VSTR0804



Smoke Evacuator Filter for Stryker Neptune 2 and Neptune 3

Designed to fit Stryker Neptune 2 and Stryker Neptune 3

3-port filter — 1/4 in (6.4 mm), 3/8 in (9.5 mm)
and 7/8 in (22 mm).

(1/case)..... VSNEP01

(4/case)..... VSNEP04



Valleylab Optimumm System Filters & Pre-filters

*Replaces Surgimedics 901202; Valleylab E3630; Valleylab Optimumm
pre-filter*

1–3/8 in (35 mm) port pre-filter.

(25/case)..... BFE3630

(30/case)..... BSPF030



Replaces Surgimedics 901412; Valleylab Optimumm E3625 main filter

ULPA filter for Optimumm smoke evacuator.

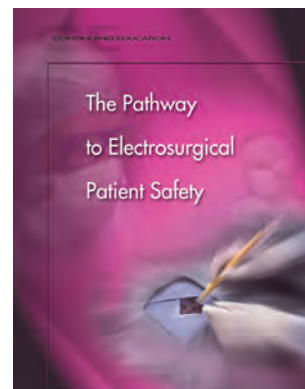
(3/case)..... BFE3625

The Pathway to Electrosurgical Patient Safety (1 Contact Hour)

The purpose of this seminar is to provide perioperative nurses and other surgical team members information on patient safety during electrosurgical procedures. Fundamental principles of electricity and electrosurgery are addressed and guide the discussion towards the significance of creating a safe surgical environment and how to prevent potential hazards.

Learning objectives:

- Describe the basics of electricity
- Define scientific terminology that governs the use of electricity in surgery
- Discuss principles of electrosurgery
- Compare and contrast active electrodes, dispersive pads, and electrosurgical generators
- Describe imperative safety measures when providing patient care during electrosurgical procedures
- Identify key factors to be considered when using electrosurgical medical devices

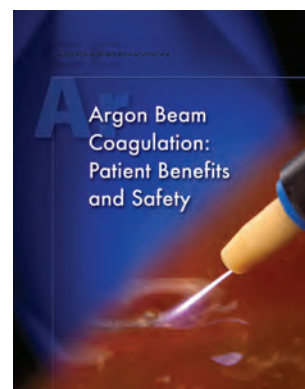


Argon Beam Coagulation: Patient Benefits and Safety (1 Contact Hour)

The purpose of this seminar is to provide nurses and other healthcare team members information regarding patient care issues during the application of argon beam coagulation. In order to properly apply this technology, a basic knowledge of electricity and its application to patient care procedures is necessary. Combining argon gas and electrosurgical energy to accomplish desired tissue responses requires an awareness of specific patient safety considerations. The patient benefits and procedural advantages are presented and the standard safety practices are reviewed.

Learning objectives:

- Explain scientific principles of argon beam coagulation
- Identify the properties of argon gas
- Describe the tissue effects related to argon beam coagulation
- Differentiate the benefits of argon beam coagulation to conventional electrosurgery
- Discuss patient care safety principles

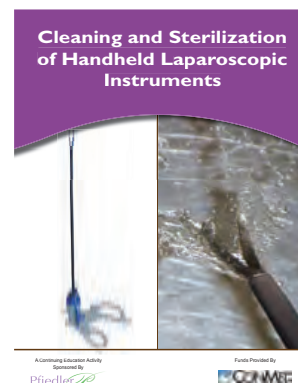


Cleaning and Sterilization of Handheld Laparoscopic Instruments (2 Contact Hours)

The purpose of this seminar is to educate nurses and other surgical team members on the proper care, cleaning, and sterilization of specialized instrumentation, in order to reduce the risk of health care associated infections. The seminar will provide an overview of the clinical implications of cleaning and sterilizing handheld laparoscopic instruments in today's dynamic surgical practice setting. This continuing education activity will review the clinical and economic impact of healthcare associated infections, current guidelines, and professional recommendations for proper cleaning and sterilization of surgical instruments.

Learning objectives:

- Identify the clinical and economic impact of health care-associated infections today
- Discuss professional guidelines and recommendations for the cleaning and sterilization
- Describe the documentation needed from an instrument manufacturer regarding validation of instrument cleaning and sterilization techniques

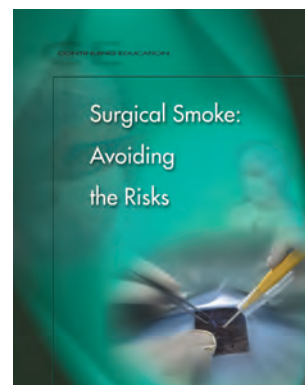


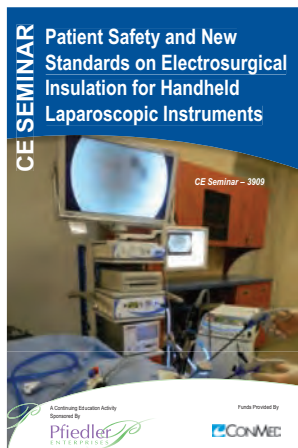
Surgical Smoke: Avoiding the Risks (1 Contact Hour)

The purpose of this seminar is to acquaint perioperative nurses and other members of the surgical team with the risks associated with surgical smoke plume. Research has demonstrated that annually, some 500,000 surgical team members are exposed to airborne contamination from surgical smoke. Frequently, patients are exposed to these same potential contaminants.

Learning objectives:

- Describe the content of surgical smoke plume
- Identify the hazardous components of plume
- Discuss potential diseases that can occur from plume transmission
- Describe symptoms of plume exposure
- Differentiate the various safety techniques for reducing exposure to plume
- Compare and contrast the various surgical smoke evacuation systems
- Describe the importance of suction tubing size to evacuation rates
- Discuss recommended practices related to surgical smoke plume





Patient Safety and New Standards on Electrosurgical Insulation for Handheld Laparoscopic Instruments (2 Contact Hours)

The purpose of this seminar is to provide nurses and other surgical team members information on patient safety and new standards on electrosurgical insulation for handheld laparoscopic instruments in order to create and maintain a safe surgical environment. This continuing education activity will provide a fundamental overview of electricity and electrosurgical systems, discuss the issues that create potential patient risk for electrosurgical injury, and provide recommendations for safety.

Learning Objectives:

- Explain the properties of electricity
- Describe electrosurgical devices, specifically each component part
- Differentiate the tissue effects resulting from the various applications of electrosurgical energy
- Identify the potential dangers associated with the use of monopolar electrosurgery during laparoscopy
- Discuss key patient safety issues related to the use of insulated electrosurgery laparoscopic equipment
- Recognize the revised IEC 60601-1 and 60601-2-2 standards for the manufacture of insulated electrosurgery laparoscopic instruments

Study Guides

Electrosurgical Patient Safety Study Guide (2 Contact Hours)



The purpose of this study guide is to provide perioperative nurses and other healthcare professionals with the basic knowledge and skills necessary for the safe use of electrosurgical equipment. The knowledge acquired will help you to provide quality patient care.

Learning objectives:

- Explain what electricity is and the application of electrical properties to electrosurgery
- Describe how electrosurgical devices work and how electrosurgical energy affects body tissue
- List preoperative, intraoperative, and postoperative safety measures that can be taken by the perioperative nurse to ensure that patients will have no adverse effects related to the application of electrosurgical energy
- Discuss electrosurgical hazards and safety measures that are unique to minimally invasive surgical procedures and to patients with cardiac pacemakers
- State how electrosurgical safety considerations relate to the six steps in the nursing process

Avoiding the Hazards of Surgical Smoke Study Guide (2 Contact Hours)



The purpose of this study guide is to acquaint perioperative personnel with the hazards inherent to exposure to surgical smoke and aerosol and measures that can be taken to minimize this hazard. The generation of surgical smoke by lasers, electrosurgery, and powered surgical instruments is discussed. Regulations and agency recommendations that relate to the use of smoke evacuation systems are listed. Factors to be taken into consideration when choosing the smoke evacuation system are explored.

Learning objectives:

- Identify the components of surgical smoke and aerosol and their potential adverse effects
- Describe the safety precautions that protect staff and patients from exposure to surgical smoke and aerosol
- Differentiate among the types of smoke evacuation systems on the market
- Discuss regulations and recommended practices related to surgical smoke and aerosol
- List factors to be taken into account when purchasing a smoke evacuation system

Catalog #	Page #	Catalog #	Page #	Catalog #	Page #
530.....	51	133002.....	34	139104EXT	29
1221.....	44	134003.....	22	139105EXT	29
1222.....	44	134006.....	22	139107.....	29
1411.....	44	134009.....	22	139108.....	29
1412.....	44	135166.....	35	139110EXT	29
3031.....	51	136000.....	33	139112.....	29
8035.....	51	136011.....	32	139112EXT	29
8535.....	51	136016.....	33	139321.....	29
8635.....	51	136050.....	20	139330.....	22
8735.....	51	136051.....	20	139331.....	22
8935.....	51	137668.....	27	16020.....	16
130187.....	32	138000.....	28	16022.....	16
130188.....	32	138008.....	28	16050.....	16
130301A.....	26	138010.....	28	16052.....	16
130302A.....	26	138011.....	28	160636.....	21
130303A.....	26	138012.....	28	160644.....	21
130304A.....	26	138025.....	28	160655.....	21
130307A.....	26	138026.....	29	160656.....	21
130309A.....	26	138029.....	26	16150.....	16
130316.....	27	138100.....	29	16160.....	16
130316-15	27	138101.....	29	16162.....	16
130317.....	27	138102.....	28	16220.....	16
130317-15	27	138103.....	28	16911.....	16
130321.....	21	138104.....	29	16912.....	16
130326A.....	26	138105.....	28	1700.....	16
130327A.....	26	138107.....	29	1-1010	43
130342.....	21	138108.....	28	1-1027	43
130343.....	21	138110.....	29	1-7001	14
130344.....	21	138112.....	29	1-7002	14
130345.....	21	138113.....	29	1-7003	14
130384.....	27	138114A.....	26	1-7005	14
130402.....	27	138115A.....	26	1-7007	14
130403.....	27	138505-10	26	1-7008	14
130404.....	27	138506-10	26	1-7009	14
130405.....	27	138650A.....	26	1-7011	14
130500.....	21	138652A.....	26	1-7013	14
131307A.....	26	138659A.....	26	1-7016	15
131309A.....	26	138663A.....	63	1-7017	15
131326A.....	26	139025EXT	29	1-7018	15
131327A.....	26	139100.....	29	1-7019	15
133001.....	34	139102.....	29	1-7020	15

Catalog #	Page #	Catalog #	Page #	Catalog #	Page #
1-7021	15	3-1011	41	60-0815-001	27
1-7024	15	3-1012	41	60-0816-001	36
1-7025	15	3-1017	42	60-0817-001	33
1-7028	15	3-1018	42	60-0821-001	33
1-7044	14	3-1019	41	60-0823-001	35
1-7045	14	3-1028	41	60-0824-001	36
1705.....	16	3-4301	41	60-0860-001	28
1-7052	15	3-4304	41	60-0867-001	28
1-7055	15	3-4305	41	60-0869-001	28
1-7057	15	3-4306	41	60-1765-001	32
1778.....	16	3-4307	41	60-1766-001	32
2-1003	42	3-4308	42	60-1767-001	32
2-1004	42	3-4311	41	60-1768-001	32
2-1005	42	3-4312	41	60-1769-001	32
2-1008	42	3-4317	42	60-1770-001	32
2-1009	43	3-4318	42	60-1771-001	32
2-1014	42	3-4319	41	60-1772-001	32
2-1017	43	3-4328	41	60-1773-001	33
2-1018	43	3-4329	42	60-1774-001	33
2-1019	42	3-4343	41	60-2121-001	36
2-1028	42	400-2100	23	60-2450-100	25
2-4301	42	400-2349	23	60-2450-120	25
2-4304	42	400-2700	23	60-2450-220	25
2-4305	42	410-2000	23	60-2450-230	25
2-4307	42	410-2100	23	60-2451-ENG.....	25
2-4308	43	410-2200	23	60-2453-001	25
2-4317	43	425-2200	23	60-2454-ENG.....	25
2-4318	43	425-2508	23	60-5102-002	35
2-4319	42	440-2400	23	60-5103-001	25
2-4328	42	450-2300	23	60-5103-002	20
270123.....	50	51-7310	23	60-5120-001	33
270165.....	50	51-7410	23	60-5121-001	33
270178.....	50	51-7710	23	60-5122-001	33
270179.....	50	51-7810	23	60-5123-001	33
3-1003	41	60-0136-001	30	60-5130-001	29
3-1004	41	60-0136-002	30	60-5132-001	36
3-1005	41	60-0137-001	30	60-5159-001	36
3-1006	41	60-0235-001	27	60-5159-002	36
3-1008	41	60-0641-001	30	60-5159-004.....	36
3-1009	42	60-0810-001	33	60-5160-001	36
3-1010	42	60-0812-001	33	60-5160-002	36

Catalog #	Page #	Catalog #	Page #	Catalog #	Page #
60-5162-001	36	60-6001-203	49	60-6829-001A	63
60-5163-001	36	60-6001-205	49	60-6829-005A	63
60-5163-002	36	60-6001-360	49	60-6839-001A	63
60-5163-004	36	60-6001-361	49	60-6963-001	25
60-5164-001	36	60-6002-301	49	60-7152-001	25
60-5164-002	36	60-6002-302	49	60-7400-001	32
60-5164-004	36	60-6002-305	49	60-7401-001	32
60-5168-001	35	60-6002-307	49	60-7402-001	32
60-5168-005	35	60-6005-500	49	60-7403-001	32
60-5169-001	35, 40	60-6005-505	49	60-7404-001	32
60-5180-101	28	60-6010-000	48	60-7405-001	33
60-5180-102	28	60-6010-001	48	60-7510-005	62
60-5180-104	28	60-6010-002	48	60-7520-005	62
60-5181-102	28	60-6010-003	48	60-7521-001	62
60-5181-103	28	60-6010-005	48	60-7522-001	62
60-5272-027	48	60-6010-020	48	60-7523-001	62
60-5272-032	48	60-6010-022	48	60-7524-001	62
60-5272-127	48	60-6035-001	44	60-7526-001	62
60-5272-132	48	60-6035-001W	44	60-7530-005	62
60-5272-227	49	60-6035-002	44	60-7570-005	62
60-5272-232	49	60-6035-003	44	60-7580-005	62
60-5272-927	49	60-6035-004	44	60-7610-001	62
60-5272-932	49	60-6035-005	44	60-7670-001	62
60-5274-027	48	60-6035-431	44	60-8005-001	24
60-5274-032	48	60-6035-433	44	60-8005-002	24
60-5274-044	48	60-6050-001	18, 54	60-8005-003	24
60-5274-127	48	60-6050-002	18, 54	60-8005-SYS	24
60-5274-132	48	60-6050-097	18	60-8005-SYS-VAC	24
60-5274-144	48	60-6050-098	18	60-8015-SYS	24
60-5274-227	49	60-6050-099	18	60-8016-ENG	24
60-5274-232	49	60-6080-000A	45	60-8017-ENG	24
60-5274-244	49	60-6085-200A	45	60-8018-SYS	24
60-5274-932	49	60-6085-201A	45	60-8026-001	24
60-5274-944	49	60-6085-202A	45	60-8026-DVD	24
60-5480-001	25	60-6085-203A	45	60-8030-001	24
60-5806-001	30	60-6102-001	36	60-8040-001	24
60-6000-130	49	60-6700-001	20, 24, 25	60-8041-001	24
60-6001-106	49	60-6790-001	34	60-8046-001	36
60-6001-107	49	60-6827-001A	63	60-8054-001	63
60-6001-108	49	60-6828-001A	63	60-8470-001	20
60-6001-110	49	60-6828-005A	63	60-8475-001	20

Catalog #	Page #	Catalog #	Page #	Catalog #	Page #
60-8480-001	20	AS-IFS1	4	BV-12X100.....	17
60-8585-120	57	AS-IFS2	4	BV-12X150.....	17
60-8585-230	57	ASM-EVAC.....	7	BV-15X100-BLS	17
60-8590-001	57	B204.....	31	BV-5X70-BLD	17
60-8596-001	57	B205.....	31	BV-5X100-BLD	17
60-8597-001	57	B210.....	31	BV-5X150-BLD	17
60-8800-SET	20	B227.....	31	BV-11X100-BLD	17
60-8800-SYS.....	20	B260.....	31	BV-11X150-BLD	17
60-8849-001	20	B261.....	31	BV-12X70-BLD	17
7-382	23	BESIWT110	80	BV-12X100-BLD	17
7-383	23	BES2000PF	80	BV-12X150-BLD	17
7-384	23	BES2000PFC.....	80	BV-15X100-BLD	17
853590.....	51	BES2000ULC.....	80	BV-11X100-HSS	17
873590.....	51	BFE20004	79	BV-12X100-HSS	17
85530101	40	BFE20009	79	BV-5X70-CAN.....	17
A238.....	31	BFE3625	82	BV-5X100-CAN.....	17
AB30630.....	6	BFE3630	82	BV-11X70-CAN.....	17
AB30631.....	6	BFE Kit	79	BV-11X100-CAN.....	17
AB30632.....	6	BFEY04PF.....	76	BV-11X150-CAN.....	17
AB30633.....	6	BFPF7/8-10	77	BV-12X70-CAN.....	17
AB30634.....	6	BILF150	78	BV-12X100-CAN.....	17
AB30636.....	6	BILF200	78	BV-12X150-CAN.....	17
AB30637.....	6	BLAP100.....	70	C-COEC35100RO	39
AB30638.....	6	BLAP100V	70	C-COEP35100H.....	39
AB30639.....	6	BLFS101	80	C-LIL-33-0	39
AB30640.....	6	BLFS103	80	C-LIL-33-30	39
AB30678.....	6	BSPF030.....	69, 70, 81, 82	C-LIL-BTU-35.....	40
ADP22X22Y.....	73	BSPF 7-8-30	81	C-LIL-C-060	39
AP5-100	8	BST370ULC.....	80	C-LIL-C-075	39
AP5-100-SILK	8	BSTM300	81	C-LIL-C-100	39
AP5-75	8	BSUCF03.....	79	C-LIL-C-120	39
AP5-75-SILK	8	BSUCF03V (with gasket)	79	C-LIL-CT-33	40
APCi5-100	8	BTLD004	79	C-LIL-H-BP	40
APCi5-75	8	BTLDXS04	79	C-LIL-H-BP1	38
ARMSTAND.....	74	BV-5X70.....	17	C-LIL-H-RP1	38
AS-iCART.....	4	BV-5X100.....	17	C-LIL-H-YP1	38
AS-iCART-2R	4	BV-5X150.....	17	C-LIL-H-YP2	38
AS-iCART-6	4	BV-11X70.....	17	C-LIL-IB-FS-35	40
AS-iCART-6V	4	BV-11X100.....	17	C-LIL-IP-2DM-31	38
AS-iCART-V	4	BV-11X150.....	17	C-LIL-IP-2SC-31ST	38
AS-iCART-V2R	4	BV-12X70.....	17	C-LIL-IP-AL-31	34

Catalog #	Page #	Catalog #	Page #	Catalog #	Page #
C-LIL-IP-CL-31	38	CD1728	12	CD7430G	10
C-LIL-IP-FS-31	38	CD1729	12	CD7435G	10
C-LIL-IP-ST-31	38	CD1735	12	CD7465G	10
C-LIL-JH-33	40	CD1907	13	CD7500G	10
C-LIL-KG-33	40	CD1909	13	CD7513G	10
C-LIL-LH-33	40	CD1922	12	CD7535G	10
C-LIL-NS-31	40	CD1923	12	CD7565G	10
C-LIL-O-060H	39	CD1928	12	CD775	10
C-LIL-O-075H	39	CD1930	12	CD801	54
C-LIL-O-100H	39	CD1935	12	CD802	54
C-LIL-O-120H	39	CD1937	12	CD8185	39
C-LIL-PC-33	39	CD1940	13	CD8185	47
C-LIL-PN-33	39	CD1950	13	CD8190	47
C-LIL-RS-33	39	CD1951	13	CD8300	47
C-LIL-SEAL-1	39	CD1952	13	CD8302	47
C-LIL-TU-31	38	CD1960	13	CD8400	47
C7010	18	CD1961	13	CD845	46
C7011	18	CD1970	13	CD8450	47
C7104	18	CD1972	13	CD846	46
C7105	18	CD1977	13	CD849	46
CD004	54	CD1982	13	CD854	40
CD1402	11	CD203	42, 43, 54	CD855	40
CD1404	11	CD220	11	CD856	46
CD1405	19	CD4011P-I	11	CD859	46
CD1406	11	CD405	11	CD860	46
CD1412	19	CD408	11	CD861	46
CD1605FH	9	CD411	11	CD862	46
CD1606FH	9	CD412	11	CD871	46
CD1607	9	CD5080P-I	11	CD872	46
CD1608FH	9	CD513	10	CD873	46
CD1609	9	CD612	10	CD874	46
CD1609FH	9	CD6300P	9	CD878	46
CD1610	9	CD6350P	9	CD920	19
CD1610FH	9	CD650	10	CD940	19
CD1612	9	CD7008G	9	CD983	50
CD1612FH	9	CD7010G	10	CD983A	50
CD1705	12	CD7012G	10	CD983N	50
CD1706	12	CD7100G	9	CD984	50
CD1708	12	CD7150G	9	CD984A	50
CD1722	12	CD7308G	9	CD984N	50
CD1723	12	CD7420G	10	CD985	50

Catalog #	Page #	Catalog #	Page #	Catalog #	Page #
CD985A	50	IFS-HGSV.....	6	PLP2005	60
CD985N	50	IFS-HPH120.....	4	PLP2020	60
CD987	50	IFS-HPH18.....	4	PLP2505	60
CD987A	50	IFS-HPH2.....	4	PLP2520	60
CD987N	50	IFS-HPH3.....	4	PLPRO4020.....	61
CD988	50	IFS-HPH36.....	4	PLPRO4520.....	61
CD988A	50	IFS-HPH4.....	4	PLPUL2020	60
CD988N	50	IFS-HPH72.....	4	PLPUL2520	60
CD989	50	IFS-ORING	6	PP010	70
CD989A	50	IFS-SEAL	6	PP010CS.....	69
CD989N	50	IFS-SP12.....	6	PP012SEO.....	69
D203.....	47	IFS-SP24.....	6	PPS604	58
DCCM01	72	IFS-SP36.....	6	PRFIL20	76
DCCOV01	72	IFS-SP48.....	6	PROTIP420.....	61, 73
ETC01	74	IFS-Tower1	4	PROTIP520.....	61, 73
EZLINK01	72	IFS-Valve1	4	PROTIP620.....	61, 73
FS10004.....	72	IFS-WC1	5	PSFTS05	66
GS1012.....	18	IFS-WC2.....	5	PSWTURBO AS.....	59
GS1013.....	18	ITS152210	59	PSWTURBO AS/220	59
GS1016.....	18	ITSDSL10	59	QI-2301	36
GS1050.....	18	ITSFTC10	59	RBT-05.....	18
GS1051.....	18	ITSQC10.....	59	RBT-05L.....	18
GS1052.....	18	LA3010EY10	73	RBT-05S.....	18
GS1053.....	18	LA3010PF10	73	RBT-11.....	18
GS1054.....	18	LA3010CL4	73	RBT-12.....	18
GS2000.....	18	LAPVUE10	71	RBT-12L.....	18
GS202K.....	18	LLVN12012	18, 71	RBT-12S.....	18
GS2050.....	18	LLVN15012	18, 71	RC-11	18
iAS5-75LP	7	MK-3500.....	19	RC-11R.....	18
iAS5-100LP.....	7	MSF8D-1.....	82	RC-12	18
iAS5-120LP.....	7	PA1025.....	64	RC-12R.....	18
iAS8-100LP.....	7	PA1025CB.....	64	RC-12S	18
iAS8-120LP.....	7	PA2010.....	64	RC-12SR	18
iASB12-100.....	7	PA2010B.....	64	RD-11	18
iASB12-120.....	7	PA2010BCB.....	64	RD-12	18
iASB5-150.....	7	PA2010CB.....	64	RD-12S	18
iCART-BRACKET.....	6	PCD-10	54	RF10110.....	67
IFS-2PM	6	PLP1005.....	60	RF10112.....	67
IFS-BC1	4	PLP1020	60	RF10210.....	67
IFS-CON1	6	PLP1505.....	60	RF10512	67
IFS-Fuse	6	PLP1520	60	RF10705.....	67

Catalog #	Page #	Catalog #	Page #	Catalog #	Page #
RF12524.....	67	TRS100SB2.....	52	VSXLLT02.....	75
RF13810.....	67	TRS175SB2.....	52	VSXLLT04.....	75
RF783824.....	67	TRS190SB2.....	52	VT10106.....	65
SB1036.....	53	TRS-ROBO-8.....	52	VT10206.....	65
SB1057.....	53	TRS-ROBO-12.....	52	VT10306.....	65
SB1079.....	53	TRS-TV-25.....	52	VT10324.....	65
SB534.....	53	TRS-VATS-15.....	52	VT10405.....	67
SB836.....	53	VC120.....	56	VT10424.....	65
SB857.....	53	VC120NF.....	56	VT10510.....	65
SB936.....	53	VC220.....	56	VT10524.....	65
SB957.....	53	VC220NF.....	56	VT10524-10.....	65
SB979.....	53	VS06.....	58, 59	VT10610.....	65
SCG-547.....	6	VS06001.....	75	VT10624.....	65
SEM-EVAC.....	7	VS06002.....	75	VT38S1010.....	65
SGQ-545.....	6	VS06004.....	75	VT78-6.....	65
SGQ-582CE.....	5	VS06T04.....	75	VTESU05.....	66
SGQ-583CE.....	5	VS12D01.....	77	VTEYKIT.....	65
SGQ-584CE.....	5	VS135.....	77	VTVIC10.....	66
SGQ-585CE.....	5	VS135 Series.....	56	VTWT206.....	66
SGQ-586CE.....	5	VS1352.....	77	VTWT324.....	66
SGQ-587.....	5	VS1354.....	77	VTWT424.....	66
SGQ-588CE.....	5	VS353.....	77	VTWT505.....	66
SGQ-589CE.....	5	VS35302.....	77	VTWT506.....	66
SGQ-590CE.....	5	VS35304.....	77	VTWT515.....	66
SGQ-591CE.....	5	VS353 Series.....	57	VTWT524.....	66
SGQ-592CE.....	5	VSEY.....	58, 59	VTWT624.....	66
SGQ-593CE.....	5	VSEY1-4.....	76	VTWT805.....	66
SGQ-594CE.....	5	VSFT10.....	72	VTWTS10.....	66
SGQ-595CE.....	5	VSNEP01.....	82	VueTip10.....	72
SIM-TUB.....	7	VSNEP04.....	82	VW120.....	57
SING VSEY.....	76	VSOH.....	58, 59	VW120NF.....	57
SING-VSXLLT.....	75	VSOH001.....	77	VW220.....	57
SML0F50.....	73	VSOH002.....	77	VW220NF.....	57
SML0F300.....	73	VSSV301.....	69	VWWM01.....	74
SnapEvac20.....	61	VSSV302.....	81	WLRT003.....	68
SQ001.....	40	VSSV304.....	81	WLRT303.....	68
SQ002.....	40	VSSV505.....	81	WLRT410.....	68
SQ-22213.....	6	VSSV50502.....	81	WTIPL10.....	68
SQ-85601038.....	6	VSTR08.....	82	WTIPS10.....	68
ST10105.....	65	VSTR0804.....	82		
T210.....	30	VSVET.....	58, 59		
T228.....	30	VSVET01.....	76		
T229.....	30	VSXLL.....	58, 59		
T229-5M.....	30	VSXLL02.....	75		
T235.....	30	VSXLL04.....	75		
T238.....	30	VSXLLT.....	58, 59		



Advanced Surgical
Product Catalog

CONMED.com

info@mail.CONMED.com