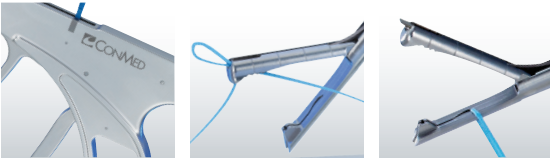




NEW

## Spectrum® AutoPass™ Suture Passer

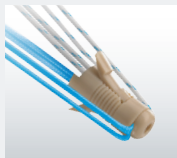
Part of CONMED's Shoulder Restoration System, this next generation suture passer has new features that help make it even easier to reliably pass suture through thick rotator cuff tissue.



**Y-KNOT RC**  
ALL - SUTURE ANCHOR



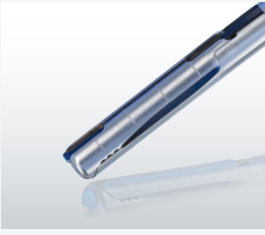
**POPLOK**  
KNOTLESS ANCHOR



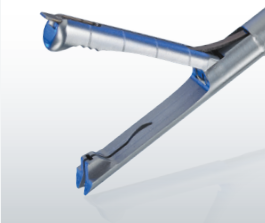
**GENESYS™ CROSSFT™**  
SUTURE ANCHOR



To learn more about these and other innovative products, call **800-237-0169** or visit **CONMED.com**.



SHOULDER  
RESTORATION  
SYSTEM



SUTURE PASSER JAWS

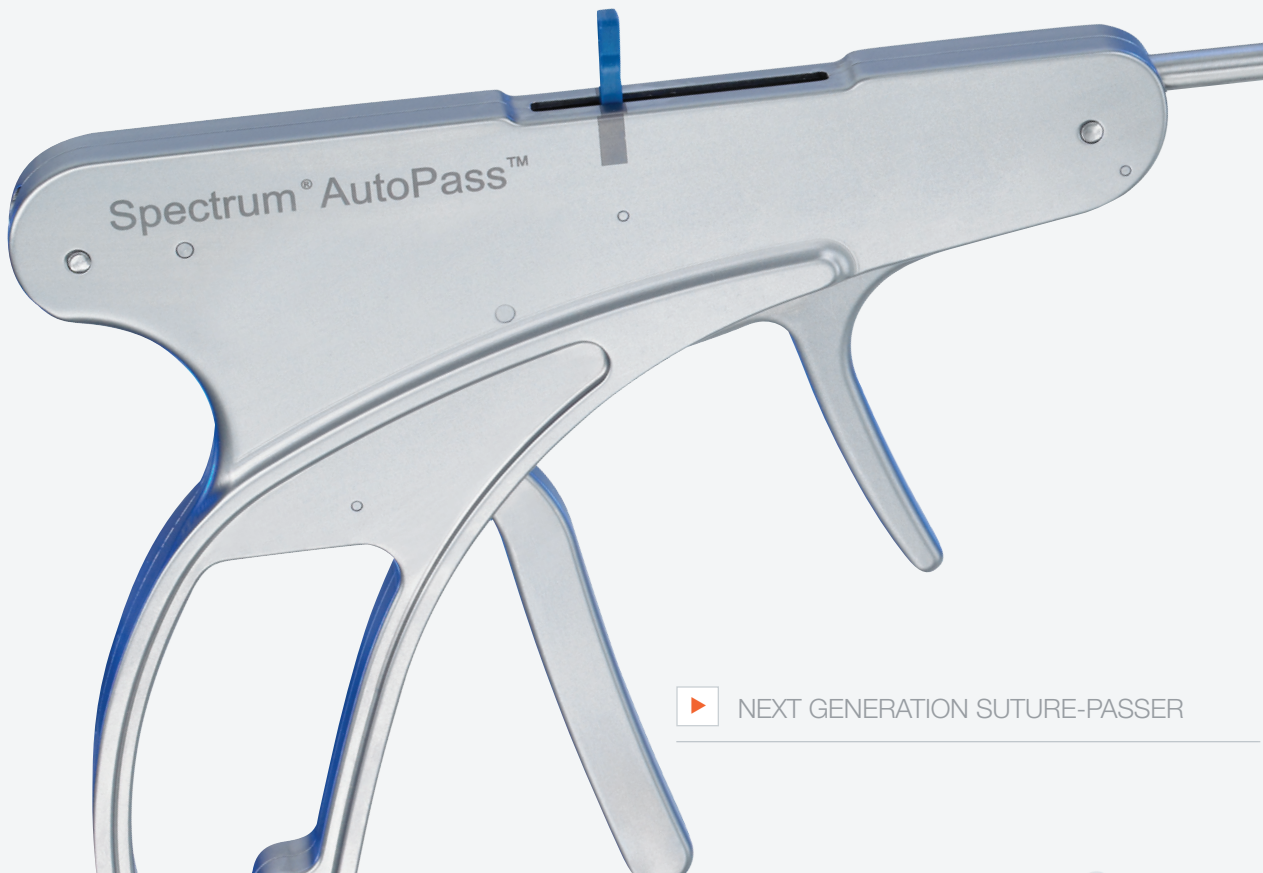
## Suture Passing Made Simple

**Consistent Performance in Thick Tissue** For a seamless experience, the combination vertical needle exit and relief cut in the jaw allow for reliable suture passing in thick tissue.

**Two Suture Passers in One** With the only surgeon-controlled trap door on the market, surgeons can alternate between capturing suture in the top jaw or releasing the suture in the joint for retrieval through another portal.

**All-inside Suture Passing Eliminates a Step** Suture can be loaded in the joint, which eliminates the steps of retrieving suture and loading outside the joint.

## Spectrum® AutoPass™ Suture Passer



▶ NEXT GENERATION SUTURE-PASSER

# SIX Simple Steps

NEW



## 1 INSERT Needle

Align tab with laser mark and fire needle once to ensure proper function.



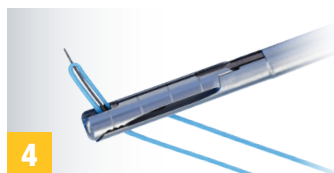
## 2 LOAD Suture

Suture is simply loaded directly into the front of the bottom jaw, with the tail down.



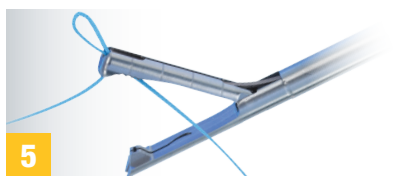
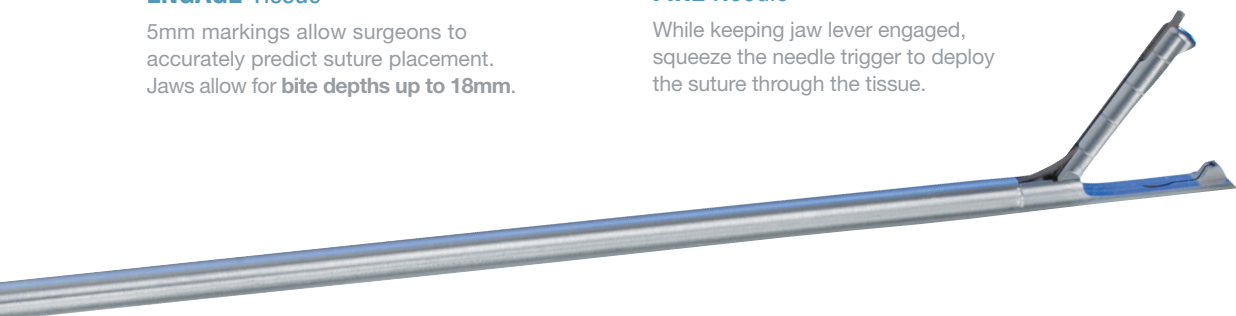
## 3 ENGAGE Tissue

5mm markings allow surgeons to accurately predict suture placement. Jaws allow for **bite depths up to 18mm**.



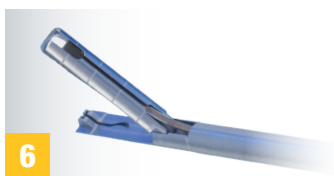
## 4 FIRE Needle

While keeping jaw lever engaged, squeeze the needle trigger to deploy the suture through the tissue.



## 5 RETRIEVE Suture

Active trap door automatically captures the suture after it has been passed through tissue, eliminating need for a separate retrieval step.



## 6 REMOVE Suture

Release jaw lever and withdraw suture passer from joint. Slightly squeeze needle trigger to open trap door and remove suture.

To schedule a demonstration, contact your local **CONMED Sales Representative**.  
For more information, visit [srs.CONMED.com](https://www.srs.CONMED.com)



525 French Road, Utica, NY 13502



*Advancing the Future of Minimally Invasive and Orthopaedic Surgery.*  
**Together.**

## Ordering Information

Description	Qty	Catalog Number
Spectrum® AutoPass™ Suture Passer	1	SMI-02AP
Spectrum® AutoPass™ Disposable Needle	Box of 5	SMI-02D

Local 727-392-6464  
Toll Free 800-237-0169

srs.CONMED.com  
customer\_service@conmed.com