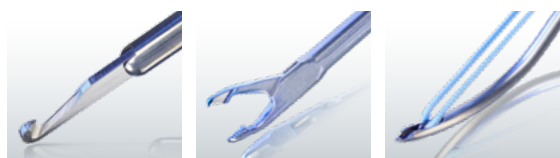




Paradigm™

Hip System

Designed by some of the world's leading hip surgeons, the Paradigm™ Hip System is a complete portfolio of products designed to provide surgeons with simple, safe, and reproducible solutions for arthroscopic hip procedures.



Experience the Paradigm shift. Take the next step toward simple, safe, and efficient hip arthroscopy. Call **1-866-4CONMED** or visit **www.CONMED.com/Paradigm** to learn more.



Introducing a New Paradigm in Hip Arthroscopy

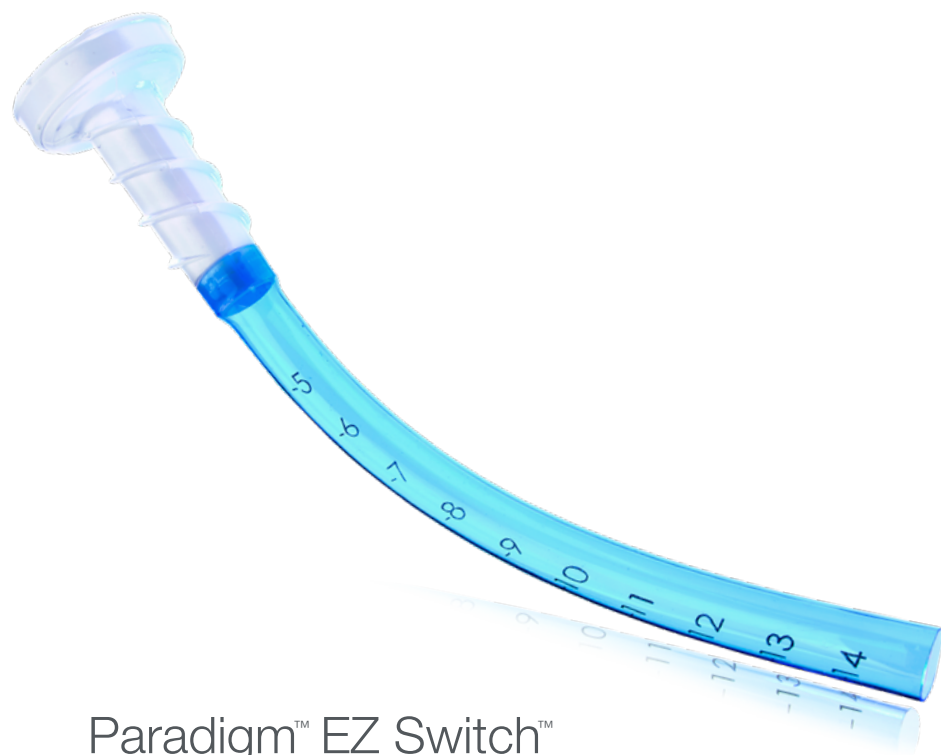
We don't have to tell you that hip arthroscopy is rigorous work. The anatomy of the hip joint makes easily and effectively accessing the surgical site a real challenge, while placing suture anchors as close to the articular cartilage as possible without penetrating the cartilage is no easy task.

To solve this problem, hip surgeons needed a system that was revolutionary, not evolutionary. That's why we partnered with a team of some of the world's most renowned hip surgeons to address these challenges. We developed an innovative portfolio of products designed to be safe and efficient, while allowing you to perform arthroscopic hip repairs like never before.

This isn't just a new hip system, it's a new paradigm in Hip Arthroscopy.

Table of Contents

Access	4-6
Labral Repair	7-9
Suture Passing	10-11
Resection	12-13
Ablation.....	14
Manual Instruments	15



Paradigm™ EZ Switch™ Portal Saver

Say goodbye to sleds, switching sticks, and rigid motion-restricting cannulas. The innovative EZ Switch™ Portal Saver is flexible to allow for a wide range of motion, while enabling surgeons to easily and efficiently switch portals.

- **Designed to Save Time** Easily switch portals without sleds or switching sticks.
- **Flexible Design** Allows for a wide range of motion.
- **Customizable** Flexible body length can be easily trimmed to match patient anatomy.
- **Optimal Access** Up to 150mm working length designed to enable easy access to the surgical site.
- **30mm threads** Designed to provide strong dermal fixation.
- **8.5mm inner diameter** Designed to fit CONMED instruments such as curved burs, suture passers, and curved drill guides.*

Paradigm™ EZ Switch™ Portal Saver PEZS01

*User inserting non-CONMED products should exercise caution as some non-CONMED products may cause damage to the device. See IFU for more details.

Paradigm™ Tactile Needle

Engineered for safety, this needle is sharp to pierce through skin, muscle, and capsule, yet features a spring-loaded blunt obturator for the open joint space that is designed to help reduce the risk of damage to the femoral head, cartilage, labrum, and other soft tissues. The needle provides tactile feedback to confirm capsule entry so that surgeons know when they are safely in open space.

Paradigm™ Tactile Access Kit and PEZS03
EZ Switch™ Portal Saver System

Paradigm™ Access Needle

Designed to easily penetrate the capsule, Paradigm™ Access Needles feature a sharp 21° bevel as well as a rigid design for better maneuvering.

Paradigm™ Access Kit and PEZS02
EZ Switch™ Portal Saver System



PARADIGM™
HIP
SYSTEM



Convenient All-In-One Kits*

Paradigm™ Hip Access Instruments are available in several kit configurations to meet the needs of your technique and your facility.

Paradigm™ EZ Switch™ Portal Saver System

- (1) Cannulated Obturator
- (1) Reference Tool
- (2) Paradigm™ EZ Switch™ Portal Savers

Paradigm™ EZ Switch™ Portal Saver System PEZS01

Paradigm™ Access Kit and EZ Switch™ Portal Saver System

- (1) Cannulated Obturator
- (1) Reference Tool
- (2) Paradigm™ EZ Switch™ Portal Savers
- (2) Paradigm™ Access Needles
- (2) Guide Wires

Paradigm™ Access Kit and
EZ Switch™ Portal Saver System PEZS02

Paradigm™ Tactile Access Kit and EZ Switch™ Portal Saver System

- (1) Cannulated Obturator
- (1) Reference Tool
- (2) Paradigm™ EZ Switch™ Portal Savers
- (1) Paradigm™ Tactile Needle
- (1) Paradigm™ Access Needle
- (2) Guide Wires

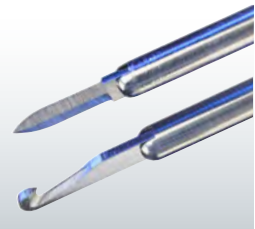
Paradigm™ Tactile Access Kit and
EZ Switch™ Portal Saver System PEZS03

Paradigm™ Retractable Straight and Hook Blades

Featuring surgeon-designed ergonomic handles, both the Paradigm™ Retractable Straight Blade and Hook Blades* are designed for safety. They feature retractable sheaths that allow surgeons to safely probe with the blunt, sheathed tip and then pull the lever to reveal the sharp blade when it is time to cut.

Paradigm™ Retractable Blade, Straight	PRBS
Paradigm™ Retractable Blade, Hook	PRBH

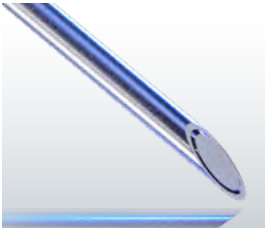
PARADIGM™
HIP
SYSTEM



RETRACTABLE
STRAIGHT AND HOOK
BLADES



TACTILE NEEDLE



ACCESS NEEDLE

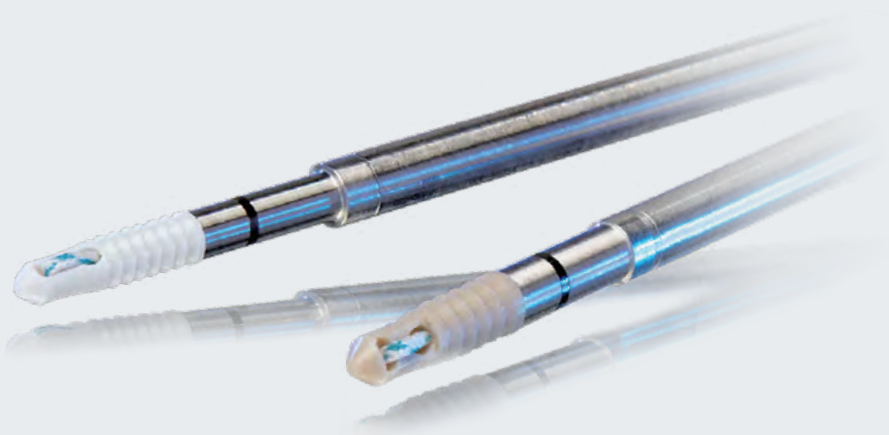
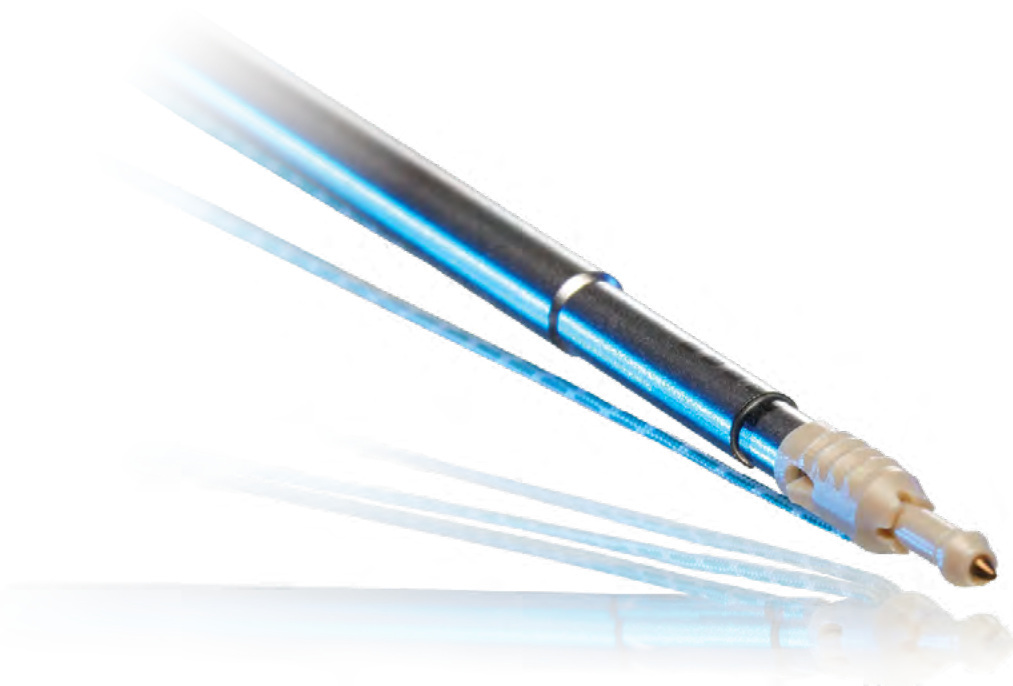


PopLok® Knotless Suture Anchors

The all-PEEK PopLok® Knotless Suture Anchors provide reliable and reproducible soft tissue fixation for hip arthroscopy. The unique suture locking mechanism traps suture within the anchor, resulting in dependable fixation.

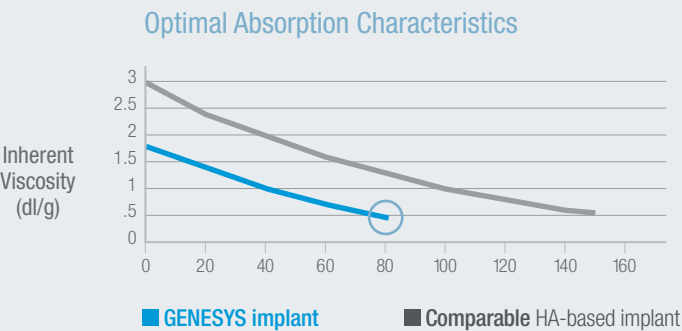
The PopLok® Knotless Suture Anchor also has the ability to tension the suture after the anchor is seated in the pilot hole. When the anchor is “popped,” the wings are deployed subcortically to provide secure fixation in the hard cortical bone of the acetabulum.

2.8mm PopLok® w/one #2 Hi-Fi® Suture	GKP-2801
3.3mm PopLok® w/one #2 Hi-Fi® Suture	GKP-3301
PopLok® 2.8/3.3mm Drill Bit	BKL-00M
PopLok® Guide	BGU-00M
PopLok® Obturator	BTR-00M

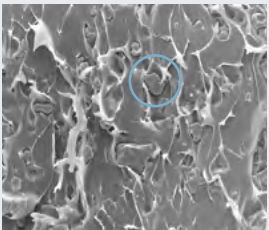


PressFT™ and GENESYS™ PressFT™ Suture Anchors

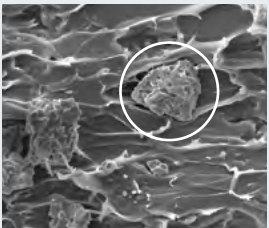
Designed to provide strong fixation in a small footprint, the PressFT™ Suture Anchors combine small size with exceptional strength. The implant comes loaded with Hi-Fi® suture and is available in PEEK or GENESYS™ biocomposite material.



When the inherent viscosity of an implant is in the 0.6 to 0.8 dl/g range, a critical degradation of mechanical properties occurs. GENESYS biocomposite breaks down approximately twice as fast as some HA-based biocomposites while maintaining strength throughout the healing period.¹



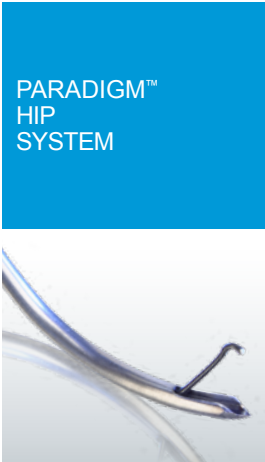
GENESYS™ (microTCP material)
magnification 500x



STANDARD (β-TCP material)
magnification 500x

GENESYS™ PressFT™ 2.1mm Anchor w/one strand of #2 Hi-Fi® Suture	NB211H
GENESYS™ PressFT™ 2.6mm Anchor w/one strand of #2 Hi-Fi® Suture	NB261H
PressFT™ 2.1mm Anchor w/one strand of #2 Hi-Fi® Suture	NP211H
PressFT™ 2.6mm Anchor w/one strand of #2 Hi-Fi® Suture	NP261H
PressFT™ Drill Guide, Spike Tip, Hip	PGHS
PressFT™ Drill Guide, Crown Tip, Hip	PGHC
PressFT™ Cannulated Obturator, Hip	PCQH
PressFT™ Drill Bit 2.1mm, Hip	TD21H
PressFT™ Drill Bit 2.6mm, Hip	TD26H

¹ Barber et al. Osteoarticular and Dental Tissue Engineering Research Center, 2011.



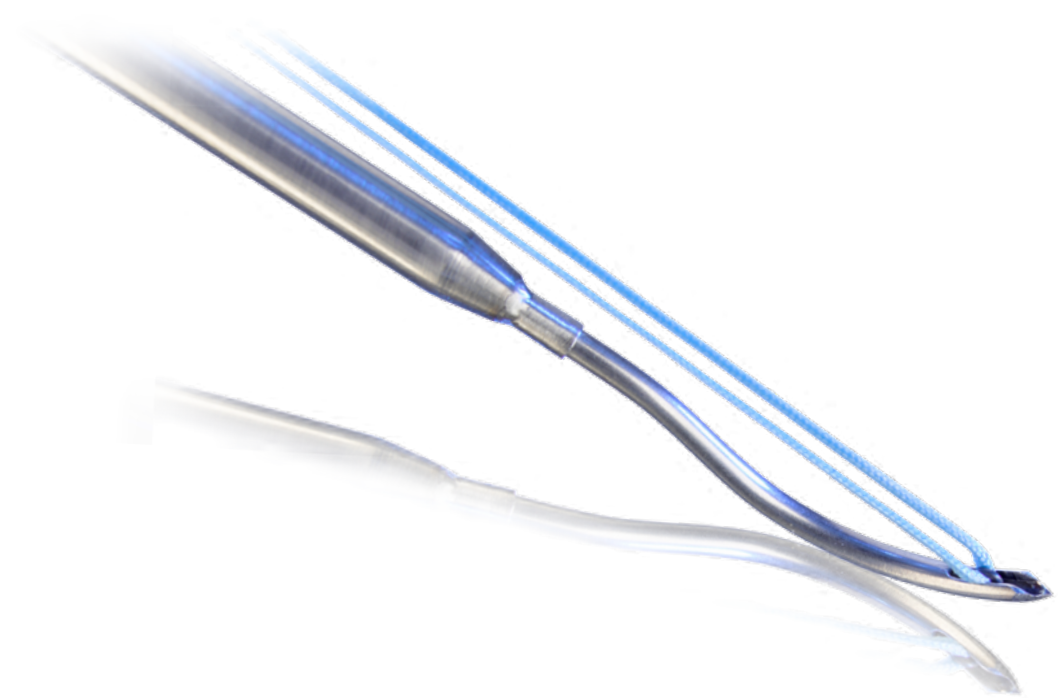
SUTURE RETRIEVAL
HOOK

Paradigm™ Relay™ Labral Suture Passer**

Many of the surgeons we partnered with felt that the curve of many commercially available suture passers was inadequate – often being too curved or not curved enough. After multiple design iterations, we developed the Relay™ Labral Suture Passer to feature a curve with an ideal angle that is “just right” for hip arthroscopy.

Easily retractable with the thumb lever, the small construct of the suture retrieval hook and needle is engineered to discourage damage to the labrum and other surrounding tissue. The end of the instrument is constructed of thick metal to help prevent bending during the procedure.

Paradigm™ Relay™ Labral Suture Passer PLSP



Paradigm™ Slim Raven™ Suture Passer**

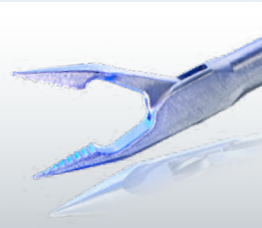
For traditional suture passing, the Slim Raven™ Suture Passer’s sharp tip and low-profile jaws easily pass and retrieve suture with minimal disruption to the labrum. The 15° upward angle provides accurate suture passing in the tight hip joint.

Paradigm™ Slim Raven™ Suture Passer, 15° up PGU700

Paradigm™ Slim™ Suture Retriever

Allowing the sutures to easily slide through the jaws for effective retrieval, this manual suture retrieving device features a 15° upward angle that provides accurate suture passing in the tight hip joint.

Paradigm™ Slim™ Suture Retriever, 15° up PGU701



PARADIGM™ SLIM RAVEN™



PARADIGM™ SLIM™
SUTURE RETRIEVER



Signature Series™
Blades and Burs

A first of their kind, the Signature Series™ hip blades and burs are designed exclusively for use in the hip joint. The durable materials and procedure-specific designs enable more effective reshaping of the anatomy of the hip.

Improved access is also achieved with the unique curved burs. These hip specific tools were designed to reach around the femoral neck for more precise resection. The 5.5mm and 6.0mm burs feature an optimized flute design enabling cutting at the distal tip. The larger sizes improve debridement efficiency.

Blades		
Cuda® - 30° Bend	4.2mm	EL9356
Sterling® Great White®	4.2mm	9299A
Sterling Ultracut®	4.2mm	C9405A

Burs		
Pre-bent Oval Bur	4.0mm	HPS-HB03
Pre-bent Oval Bur	6.0mm	HPS-HB13
Pre-bent Spherical Bur	5.5mm	HPS-HB11
Pre-bent Polishing Bur	5.5mm	HPS-HB12

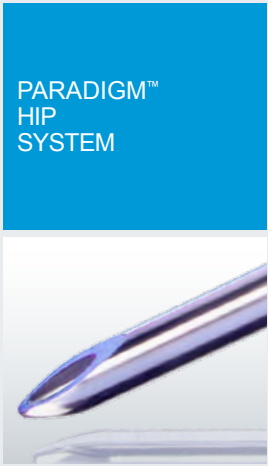
Additional listing of Signature Series® Blades and Burs are available.

Pre-Bent Lanza™
Tapered Specialty Shaver Blade

CONMED's Lanza™ Tapered Specialty Shaver Blade has a tapered distal tip, smooth cutting profile, and dual-inner cutting window that is designed for precise, efficient resection in tight anatomical spaces and sensitive areas.

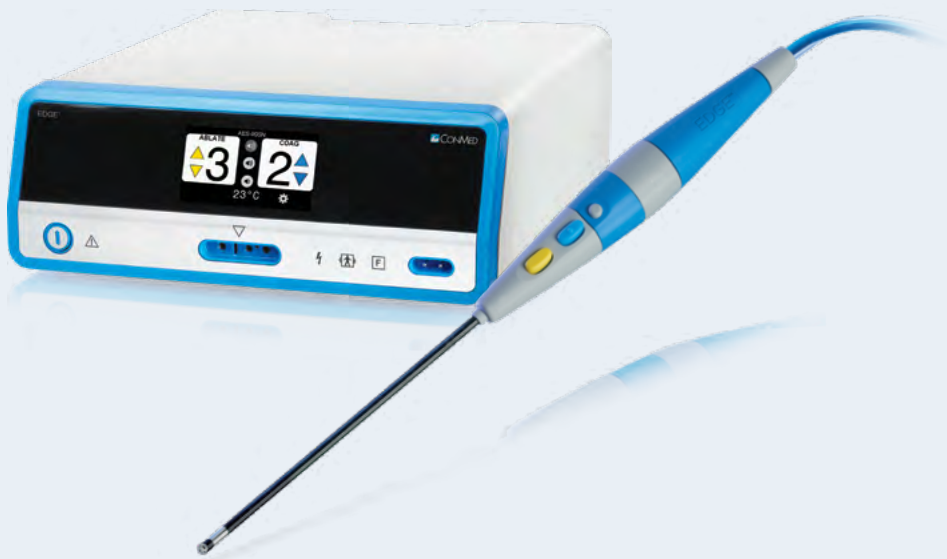
The Lanza is pre-bent 15° and available in a length that is optimal for hip arthroscopy.

Pre-bent Lanza™ – 15° HPS-CB09



TAPERED TIP





Edge® Extended Length Probes for Hip Arthroscopy

Compatible with CONMED's Edge® Bipolar Arthroscopic RF System, the Edge® 50° and 90° probes are available in the extended 18cm length to provide convenient access for hip procedures. The versatile design is intended to provide bulk volumetric soft tissue ablation with the face of the electrode or plasma layer as well as fine tune sculpting work with the edge of the electrode or plasma layer.

Edge® probes feature a unique one-piece tungsten electrode designed to reduce the risk of probe degradation,² allowing surgeons to aggressively and safely remove bulk tissue.

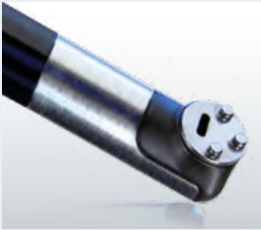
EDGE® Arthroscopic Energy Bipolar Probes

Arthroscopic Energy 90° Probe with Suction, Extended Length	AES-90SL
Arthroscopic Energy 50° Probe with Suction, Extended Length	AES-50SL

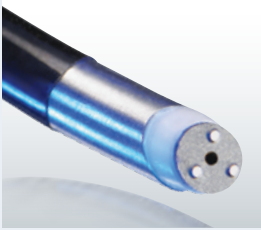
EDGE® Arthroscopic Energy Capital Equipment

Arthroscopic Energy Generator	AES-1
Arthroscopic Energy Wireless Ablation/Resection Foot Pedal	W2000D
Arthroscopic Energy Foot Control	AES-FC
Arthroscopic Energy Wireless Foot Control	AES-WFC

Additional Edge® accessories are available.



EDGE® 90° PROBE



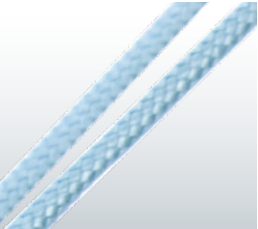
EDGE® 50° PROBE

² Data on file. TR17- 00614.

Paradigm™ Curved Knot Pusher

Currently the only curved knot pusher available,³ the Paradigm™ Curved Knot Pusher is designed to simplify and streamline hip arthroscopy procedures. It features an anatomic curved design that is intended to simplify knot-tying in hard to reach places and optimize precise knot stack placement around the acetabular rim.

Paradigm™ Curved Knot Pusher PCKP



SIMPLIFIED KNOT-TYING

³ Compared to other large hip arthroscopy companies.

CONMED Advantage Programs

CONMED provides three programs designed to offer pricing and procurement advantages that help overcome the budgetary and cash-flow roadblocks to equipping facilities with the new technology they need.

Advantage Placement

In exchange for a fixed-price disposables agreement, we'll place capital equipment in your institution at no charge. This program lets you use capital equipment financed by the disposables you already need for your procedures.

Advantage Rewards

With a new commitment for CONMED disposables, we give back a percentage as a credit that can be put toward any capital equipment purchase or service contract in our broad portfolio.

Advantage Finance

The Advantage Finance Program allows facilities to get new technology or service at fixed monthly payments – with no down payment.



Paradigm™ Hip System

525 French Road
Utica, New York 13502

Toll Free: 1-866-4CONMED
International: 727-214-3000
www.CONMED.com

customerexperience@CONMED.com
internationalorders@CONMED.com



Comprised of PEEK-OPTIMA® polymer from Invivo® Biomaterial Solutions. PEEK-OPTIMA® and Invivo® are registered trademarks of Invivo Ltd. All Rights are Reserved.