



Hip Preservation System™

The Hip Preservation System™ from CONMED provides comprehensive solutions for hip arthroscopy – designed to deliver the best outcomes to surgeons, OR staff, hospitals and the patients they treat.



To learn more about these and other innovative products, call **800-237-0169** or visit **CONMED.com**.



Advancing the Future of Minimally Invasive Hip Repair

At CONMED, we believe every product we create should be a solution to a challenge that our customers face. That's why for over 50 years, we've partnered directly with surgeons to develop a complete portfolio of forward-thinking, high-performance products available today in hip arthroscopy.

With surgeons like you, we are:

*Advancing the Future of Minimally Invasive and Orthopaedic Surgery. **Together.***



Table of Contents

Access	4-5
Labral Repair Fixation.....	6-7
Gluteus Medius Fixation	8-9
Suture Passing	10
Resection	11-12
Instrumentation.....	13
Visualization	14
Fluid Management.....	15
Financial Programs	16

HIP
PRESERVATION
SYSTEM™



HIP
PRESERVATION
SYSTEM™

DoubleLatch® Bridge System & Accessories

From our DoubleLatch® bridge system with quick connect interface to our hip disposable kit, CONMED's Hip Preservation System™ will assist you through joint entry and other key procedure steps.

DoubleLatch® Bridge System

Single Stopcock DoubleLatch Hip Bridge	DLH100
Double Stopcock DoubleLatch Hip Bridge	DLH200
4.6mm DoubleLatch Hip Conical Obturator	DLH460
4.6mm DoubleLatch Hip Cannula Straight	DLH462
5.8mm DoubleLatch Hip Conical Obturator	DLH580
5.8mm DoubleLatch Hip Cannula Straight	DLH582
QuickLatch® HD scope, 4mm 70°	HD4700
QuickLatch® HD scope, 4mm 30°	HD4300

Hip Accessories

Disposable Kit (Includes; hip access needle, 2 guidewires, banana blade, cannulated switching stick, and 2 Hex Flex® Cannulas - 8.0 x 120mm)	HA-222DK
Switching StickPack®, 2 Switching Sticks, 2 Guidewires	HPS-SSP
Hip Access Needle Pack, 2/Pk	HPS-NDL
Disposable Banana Blade	HPS-BLD
Universal Blade Handle	HPS-BHNDL
8.0 x 120mm Hip Cannula (Purple), 6/Box	HPS-CAN
Cannulated Obturator	9837

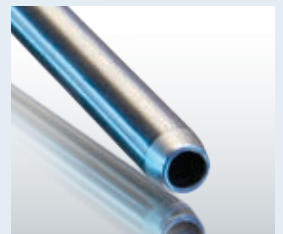


Portal Dilators & Slotted Cannulas

Unlike other systems, the Hip Portal Dilators come in three different sizes for maximum access, precision and flexibility. These dilators were designed for ease of use with the Slotted Cannula System. The Slotted Cannulas improved low profile design allows for ease of instrument insertion and portal transfer. The rigid uni-body shaft is constructed from a single piece of metal for a durable and reliable joint access solution.

4.6mm Small Portal Dilator	HPS-PDS
5.2mm Medium Portal Dilator	HPS-PDM
6.0mm Large Portal Dilator	HPS-PDL
5.0mm Low Profile Slotted Cannula	HPS-SC5
6.7mm Low Profile Slotted Cannula	HPS-SC67
5.0mm Slotted Cannula	SC6900
6.7mm Slotted Cannula	SC7900

HIP
PRESERVATION
SYSTEM™



Portal Dilator



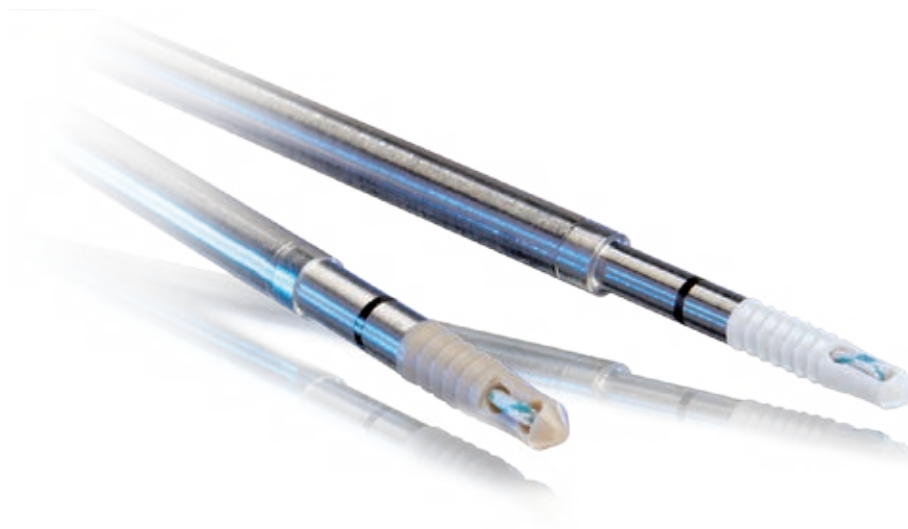
HIP
PRESERVATION
SYSTEM™

PopLok® Knotless Suture Anchor

The all-PEEK PopLok® Knotless Suture Anchors provide reliable and reproducible tendon-to-bone fixation for hip arthroscopy. The unique suture locking mechanism traps suture within the anchor, resulting in dependable fixation.

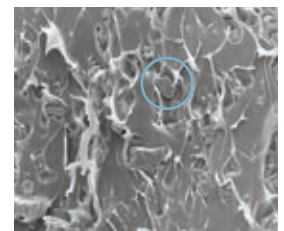
The PopLok Knotless Suture Anchor also has the ability to tension the suture after the anchor is seated in the pilot hole. When the anchor is “popped,” the wings are deployed subcortically to provide secure fixation in the bone.

PopLok 2.8mm w/One Strand of #2 Hi-Fi® Suture	GKP-2801
PopLok 2.8mm w/Two Strands of #0 Hi-Fi Suture	GKP-2802
PopLok 3.3mm w/One Strand of #2 Hi-Fi Suture	GKP-3301
PopLok 3.3mm w/Two Strands of #0 Hi-Fi Suture	GKP-3302
PopLok 2.8/3.3mm Drill Bit	BKL-00M
PopLok Drill Guide	BGU-00M
PopLok Cannulated Obturator	BTR-HIP

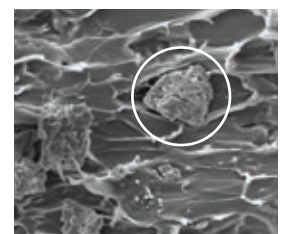


PressFT™ and GENESYS™ PressFT Suture Anchors

For surgeons who need strong fixation in a small footprint, the PressFT™ Suture Anchors combine small size with exceptional strength. The implant comes single or double-loaded with Hi-Fi® suture and is available in PEEK or our proprietary GENESYS™ biocomposite material.

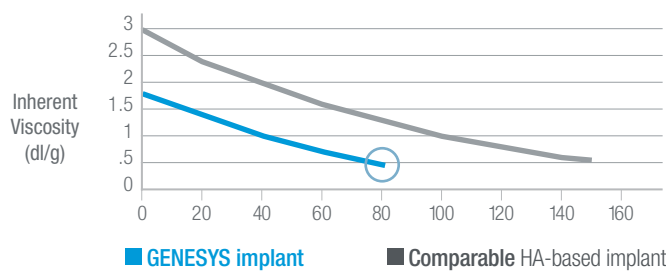


GENESYS (microTCP material)
magnification 500x



STANDARD (β-TCP material)
magnification 500x

Optimal Absorption Characteristics



When the inherent viscosity of an implant is in the 0.6 to 0.8 dl/g range, a critical degradation of mechanical properties occurs. GENESYS biocomposite breaks down approximately twice as fast as some HA-based biocomposites while maintaining strength throughout the healing period.⁶

PressFT™ 2.1mm Anchor w/one strand of #2 Hi-Fi® - PEEK	NP211
PressFT 2.6mm Anchor w/one strand of #2 Hi-Fi® - PEEK	NP261
GENESYS™ PressFT 2.1mm Anchor w/one strand of #2 Hi-Fi®	NB211
GENESYS PressFT 2.6mm Anchor w/one strand of #2 Hi-Fi®	NB261

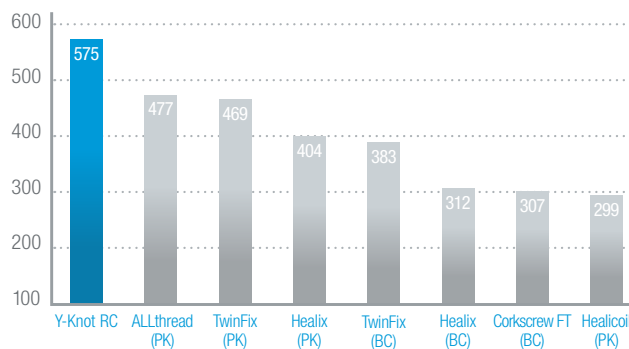
⁶ Osteoarticular and Dental Tissue Engineering Research Center, 2011.



Y-Knot® RC Self-Punching All-Suture Anchor

With strong fixation, less bone removal and a simple, self-punching technique, the Y-Knot® RC helps overcome the trade-offs of traditional anchors. Currently the only self-punching all-suture anchor available, Y-Knot RC anchors can help streamline procedures with a fast, efficient technique that eliminates the need to create and find a pilot hole. In addition to requiring less bone removal than larger traditional anchors, the small 2.8mm footprint provides placement and fixation advantages when bone real estate is limited.

Pullout (N)^{1,2}
Pullout in Porcine Cortical Bone

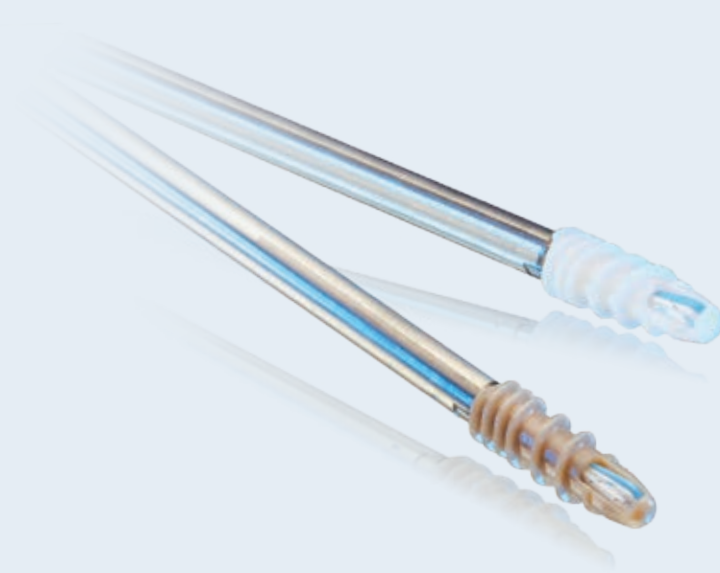


HIP
PRESERVATION
SYSTEM™

In addition to the preferable 2.8mm footprint, these anchors deploy to 5.0mm under the cortex for firm fixation even in soft bone.

- | | |
|--|----------|
| Y-Knot® RC All-Suture Anchor – Double Loaded with two strands of #2 Hi-Fi® | YRC02 |
| Y-Knot® RC All-Suture Anchor – Triple Loaded with three strands of #2 Hi-Fi® | YRC03 |
| Y-Knot® RC Disposable Broaching Punch, 2.8mm | Y-DBP28 |
| Y-Knot® RC Broaching Punch, 2.8mm | Y-BP28 |
| Y-Knot® RC Disposable Drill Bit, 2.8mm | Y28D |
| Y-Knot® RC Drill Guide | Y-DGRC |
| Y-Knot® RC Drill Guide Obturator | Y-OBRC |
| Instrument Tray | RCR-TRAY |

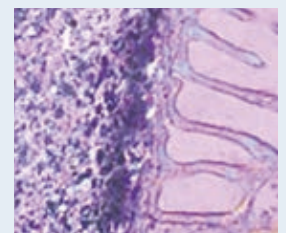
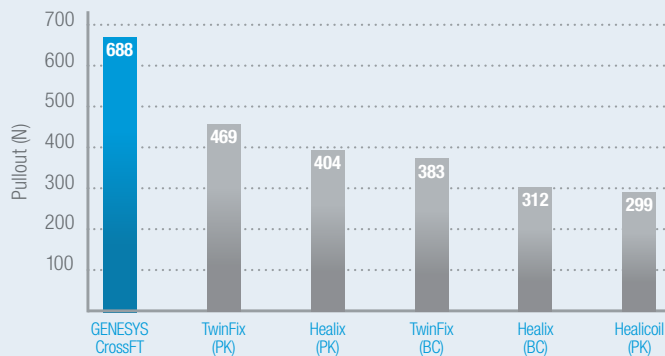
¹Data on File. ²Data on file. Double-loaded anchor, other anchors in chart are single-loaded.



CrossFT™ and GENESYS™ CrossFT™ Suture Anchors

The CrossFT™ (PEEK) and GENESYS™ CrossFT (biocomposite) fully threaded suture anchors provide the combination of strength and reliability seldom found in other anchors. The cortical and cancellous threads provide industry-leading pullout strength. The anchor cannulation may channel growth factors to the healing tendon. The GENESYS CrossFT anchor is composed of innovative GENESYS biocomposite material with proven bone in-growth³ and exceptional pullout strength.⁴

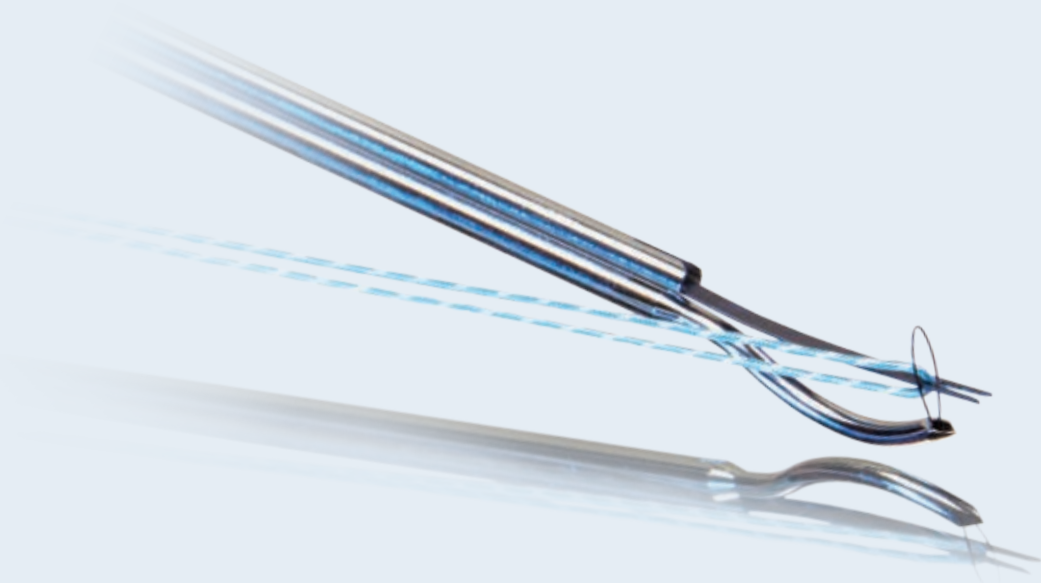
Loads-to-Failure in Porcine Cortical Bone⁴



GENESYS™ Implant
Showing Bone in-Growth

	Double-Loaded	Triple-Loaded
4.5mm CrossFT™ Suture Anchor	CFP-4502B	CFP-4503B
5.5mm CrossFT Suture Anchor	CFP-5502B	CFP-5503B
6.5mm CrossFT Suture Anchor	CFP-6502B	CFP-6503B
4.5mm GENESYS™ CrossFT Suture Anchor	CFBC-4502B	CFBC-4503B
5.5mm GENESYS CrossFT Suture Anchor	CFBC-5502B	CFBC-5503B
6.5mm GENESYS CrossFT Suture Anchor	CFBC-6502B	CFBC-6503B

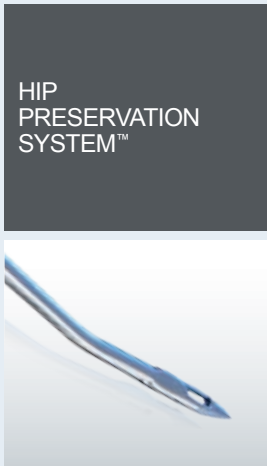
³Daculsi et al. Biomaterials 2011. ⁴Barber et al. Arthroscopy 2013.



Spectrum® MVP™ Suture Passer

The Spectrum® MVP suture passer continues to set the bar for precise, efficient, and versatile suture passing. The 1.8mm low profile suture hook of the Spectrum MVP™ device passes and retrieves suture without the need for a separate suture shuttling step, while also offering a broad array of suture hook configurations, covering a wide variety of suture passing needs.

Spectrum MVP - Medium Crescent Hook - Disposable (3/box)	C6400EL
Spectrum MVP - 45° Right Hook - Disposable (3/box)	C6410EL
Spectrum MVP - 45° Left Hook - Disposable (3/box)	C6420EL



Slim Raven
Suture Passer

Slim Raven Suture Passer

For a simple-to-use, traditional suture passing solution, The Slim Raven™ Suture Passer's sharp tip and low profile jaws easily pass and retrieve suture with minimal disruption to the labrum which may help preserve tissue. The 15 degree upward angle provides accurate suture passing in the tight hip joint.

Slim Raven	GU2006EL
------------	----------





D4000™ Arthroscopic Resection System

The D4000™ powered instrument console drives powered instruments and accessories used in the cutting of soft tissue and bone. The consoles provide two handpiece drive ports that support a variety of handpieces. This system offers many customizable features and day-to-day memory settings that default to the customer's preferred settings. Handpiece functionality can be controlled directly by the handpiece, and/or by a corded footswitch or wireless footswitch.

D4000™ Arthro Power Console	D4000
24K® Interface Cable	D4024
Ergo™ 2-Button Handpiece	D4240
Ergo No-Button Handpiece	D4200

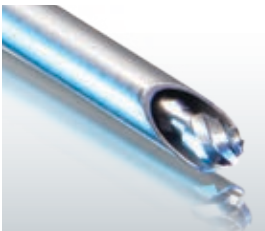
HIP
PRESERVATION
SYSTEM™



HIP
PRESERVATION
SYSTEM™



Great White Blade
Gator Blade



Pear Bur

Signature Series™ Blades & Burs

A first of their kind, the Signature Series™ hip blades and burs are designed exclusively for use in the hip joint. The durable materials and procedure-specific designs enable more effective reshaping of the anatomy of the hip.

Improved access is also achieved with the unique curved burs. These hip specific tools were designed to reach around the femoral neck for more precise resection. The 5.5mm and 6.0mm burs feature an optimized flute design enables cutting at the distal tip as well as a larger size for improved debridement efficiency.

Bendable Blade

Cuda® 4.2mm - Bendable to 30° EL9356

Straight Blades

4.2mm Sterling® Great White® HPS-C001
 4.2mm Sterling Gator® HPS-C002
 4.2mm Sterling Full Radius Resector HPS-C003
 4.2mm Sterling UltraCut® HPS-C004

Prebent Blades

4.2mm Prebent Great White® Convex HPS-CB01
 4.2mm Prebent Great White Concave HPS-CB02
 4.2mm Prebent Full Radius Resector Convex HPS-CB03
 4.2mm Prebent Full Radius Resector Concave HPS-CB04
 4.2mm Prebent Gator® Convex HPS-CB05
 4.2mm Prebent Gator Concave HPS-CB06
 4.2mm Prebent UltraCut® Convex HPS-CB07
 4.2mm Prebent UltraCut Concave HPS-CB08

Prebent Burs

4.5mm Prebent Spherical Bur HPS-HB01
 4.5mm Prebent Polishing Bur HPS-HB02
 4.0mm Prebent Oval Bur HPS-HB03
 5.5mm Prebent Spherical Bur HPS-HB11
 5.5mm Prebent Polishing Bur HPS-HB12
 6.0mm Prebent Oval Bur HPS-HB13

Straight Burs

4.5mm Spherical Bur HPS-H001
 5.5mm Spherical Bur HPS-H011
 4.0mm Oval Bur HPS-H002
 6.0mm Oval Bur HPS-H012
 4.0mm Pear Bur HPS-H003
 6.0mm Pear Bur HPS-H013
 4.5mm Polishing Bur HPS-H004
 5.5mm Polishing Bur HPS-H014
 4.5mm Vortex® Bur HPS-H005
 6.0mm Vortex Bur HPS-H015
 4.0/4.5mm Bur Sheath HPS-S001
 5.5/6.0mm Bur Sheath HPS-S011

Manual Instruments

CONMED has set the standard for arthroscopic instrumentation with a reputation for precise and dependable manual instruments. From forceps and graspers to punches and probes, all the instruments in CONMED's extensive portfolio are available in a wide range of diameters and lengths for use in a variety of procedures.

Grasping Forceps	S210GSP
Suture Retrieval Forceps	S210SRF
Micro-Scissors	S210MSC
Aggressor® Forceps Up	S210AFU
Aggressor Forceps Left	S210AFL
Aggressor Forceps Right	S210AFR
Retrograde Forceps	S210RGF
Rotary Forceps Right	S210RFR
Rotary Forceps Left	S210RFL
Liberator™	25.50014EL
Crochet Hook	C6105EL
Knot Pusher	8748EL
Katana® Suture Cutter	GU1009EL
Probe	21.1001EL
Open Curette	HPS-OC
Closed Curette	HPS-CC
Curette - 45 Degree Tip	MFX-45CU
Hip Length Raven Straight	GU1004EL
Hip Length Raven 35 Degree Up	GU1008EL

Microfracture Awls

The CONMED ergonomically designed microfracture awl instrument set is designed to provide the surgeon with a full set of options for performing the hip microfracture technique.

Light Microfracture Awl - 30 Degree	MFX-30LT
Light Microfracture Awl - 45 Degree	MFX-45LT
Light Microfracture Awl - 90 Degree	MFX-90LT
Heavy Microfracture Awl - 0 Degree	MFX-0HV
Heavy Microfracture Awl - 30 Degree	MFX-30HV
Heavy Microfracture Awl - 45 Degree	MFX-45HV
Heavy Microfracture Awl - 90 Degree	MFX-90HV
Microfracture Awl - 60 Degree	HPS-60MF



HIP
PRESERVATION
SYSTEM™



**HIP
PRESERVATION
SYSTEM™**

IM8000 & LS8000 True HD 3MOS Camera System and Direct LED Light Source

High-definition 3MOS camera chip technology is the latest on the market with enhanced image processing that enables surgeons to more accurately view bone and soft tissue characteristics. This allows for quick identification of anatomical structures allowing surgeons to see clearly and deliver the best possible care for their patient.

Direct LED Light Source optimizes the image that the surgeon sees on the monitor. It helps to produce a clear view of the surgical site as well as a natural color spectrum by achieving consistent light output throughout its lifetime.

True HD 3MOS Camera Control Unit	IM8000
Autoclavable True HD 3MOS "Eyecup" Camera Head	IM8120
Autoclavable True HD 3MOS "Cartridge" Camera Head	M8121

Direct LED Light Source	LS8000
VP100X Camera System Tray Series (RADEL)	VP1003, VP1005, VP1006
HD LED Medical Monitors (26" and 32")	VP4826, VP4832
HD Image Management System	DRSHD1080P
Video Cart	VP8500



Fluid Management Systems

CONMED is a leader in arthroscopic fluid management with its 10k[®] and 24k[®] pump consoles. The 24k pump offers inflow/outflow control capabilities, True Intra-articular Pressure Sensing (TIPS), and shaver suction control. Both pumps offer simple setup and priming with flow rates up to 2 liters per minute, and an EcoFlow[®] day-use tubing option that may increase efficiency in a busy OR.

24k Pump	24k
10k Pump	10k
Inflow Tubing	10k100
Inflow Tubing w/Shaver Suction Line	10k150
Outflow Shaver Suction Line	24k100
Pressure Sensing Line	24kTIPS
Eco Flow – Day-Use Pump Tubing	10k600
Eco Flow – Single-Use Patient Tubing	10k605

HIP
PRESERVATION
SYSTEM™



EcoFlow[®] Tubing



10k[®] Pump

CONMED Advantage Programs

Financial flexibility starts here

To help our customers achieve their goals, we worked closely with them to truly understand their needs and create real solutions. We developed three programs that are designed to offer pricing and procurement advantages that help overcome the budgetary and cash-flow roadblocks to equipping facilities with the new technology they need:

Advantage [Placement](#)

Advantage [Rewards](#)

Advantage [Finance](#)

To learn more about this program, please contact your local sales representative.



Hip Preservation System™

525 French Road
Utica, New York 13502

Local 727-392-6464
Toll Free 800-237-0169

CONMED.com
customer_service@conmed.com



Comprised of PEEK-OPTIMA® polymer from Invivo® Biomaterial Solutions. PEEK-OPTIMA® and Invivo® are registered trademarks of Invivo Ltd. All Rights are Reserved.